

**Anti-GST GSTP1 Rabbit Monoclonal Antibody**  
Catalog # ABO13223**Specification****Anti-GST GSTP1 Rabbit Monoclonal Antibody - Product Information**

Application	WB, IF, ICC, IP
Primary Accession	<a href="#">P09211</a>
Host	Rabbit
Isotype	Rabbit IgG
Reactivity	Rat, Human, Mouse
Clonality	Monoclonal
Format	Liquid

**Description**

Anti-GST GSTP1 Rabbit Monoclonal Antibody . Tested in WB, ICC/IF, IP applications. This antibody reacts with Human, Mouse, Rat.

**Anti-GST GSTP1 Rabbit Monoclonal Antibody - Additional Information**

**Gene ID** 2950

**Other Names**

Glutathione S-transferase P, 2.5.1.18, GST class-pi, GSTP1-1, GSTP1 ([http://www.genenames.org/cgi-bin/gene\\_symbol\\_report?hgnc\\_id=4638](http://www.genenames.org/cgi-bin/gene_symbol_report?hgnc_id=4638))>HGNC:4638</a>), FAEES3, GST3

**Calculated MW**

23356 MW KDa

**Application Details**

WB 1:1000-1:5000<br>ICC/IF 1:50-1:200<br>IP 1:50

**Subcellular Localization**

Cytoplasm. Mitochondrion. Nucleus. The 83 N-terminal amino acids function as an uncleaved transit peptide, and arginine residues within it are crucial for mitochondrial localization.

**Contents**

Rabbit IgG in phosphate buffered saline, pH 7.4, 150mM NaCl, 0.02% sodium azide and 50% glycerol, 0.4-0.5mg/ml BSA.

**Immunogen**

A synthesized peptide derived from GST

**Purification**

Affinity-chromatography

**Storage**

**Store at -20°C for one year. For short term storage and frequent use, store at 4°C for up to one month. Avoid repeated freeze-thaw cycles.**

## Anti-GST GSTP1 Rabbit Monoclonal Antibody - Protein Information

**Name** GSTP1 ([HGNC:4638](#))

**Synonyms** FAES3, GST3

### Function

Conjugation of reduced glutathione to a wide number of exogenous and endogenous hydrophobic electrophiles. Involved in the formation of glutathione conjugates of both prostaglandin A2 (PGA2) and prostaglandin J2 (PGJ2) (PubMed: [9084911](http://www.uniprot.org/citations/9084911)). Participates in the formation of novel hepoxilin regioisomers (PubMed: [21046276](http://www.uniprot.org/citations/21046276)). Negatively regulates CDK5 activity via p25/p35 translocation to prevent neurodegeneration.

### Cellular Location

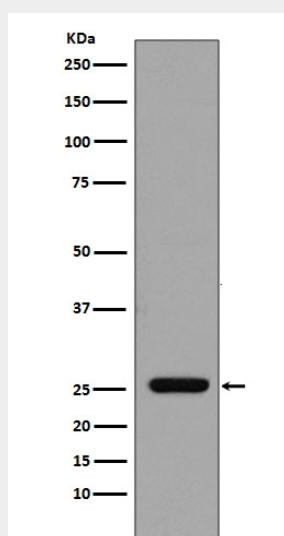
Cytoplasm. Mitochondrion. Nucleus. Note=The 83 N-terminal amino acids function as an uncleaved transit peptide, and arginine residues within it are crucial for mitochondrial localization

## Anti-GST GSTP1 Rabbit Monoclonal Antibody - Protocols

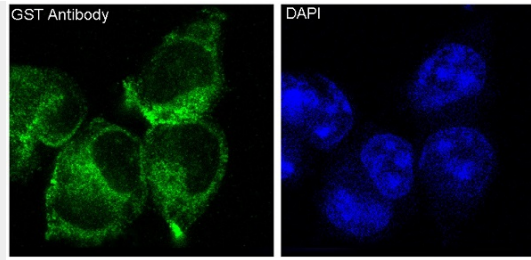
Provided below are standard protocols that you may find useful for product applications.

- [Western Blot](#)
- [Blocking Peptides](#)
- [Dot Blot](#)
- [Immunohistochemistry](#)
- [Immunofluorescence](#)
- [Immunoprecipitation](#)
- [Flow Cytometry](#)
- [Cell Culture](#)

## Anti-GST GSTP1 Rabbit Monoclonal Antibody - Images



Western blot analysis of GST expression in GST recombinant protein.



Immunofluorescent analysis of 293 cells, using GST Antibody.