

**Anti-MBP Rabbit Monoclonal Antibody**  
Catalog # ABO13219**Specification**

---

**Anti-MBP Rabbit Monoclonal Antibody - Product Information**

Application	WB
Primary Accession	<a href="#">POAEX9</a>
Host	Rabbit
Isotype	Rabbit IgG
Reactivity	Rat, Human, Mouse
Clonality	Monoclonal
Format	Liquid

**Description**

Anti-MBP Rabbit Monoclonal Antibody . Tested in WB application. This antibody reacts with Human, Mouse, Rat.

**Anti-MBP Rabbit Monoclonal Antibody - Additional Information**

**Gene ID** 75204178;948538

**Other Names**

Maltose/maltodextrin-binding periplasmic protein, MMBP, Maltodextrin-binding protein, Maltose-binding protein, MBP, malE {ECO:0000303|PubMed:4215651}

**Calculated MW**

43388 MW KDa

**Application Details**

WB 1:1000-1:5000

**Subcellular Localization**

Periplasm.

**Contents**

Rabbit IgG in phosphate buffered saline, pH 7.4, 150mM NaCl, 0.02% sodium azide and 50% glycerol, 0.4-0.5mg/ml BSA.

**Immunogen**

A synthesized peptide

**Purification**

Affinity-chromatography

**Storage**

**Store at -20°C for one year. For short term storage and frequent use, store at 4°C for up to one month. Avoid repeated freeze-thaw cycles.**

**Anti-MBP Rabbit Monoclonal Antibody - Protein Information**

**Name** malE {ECO:0000303|PubMed:4215651}

**Function**

Part of the ABC transporter complex MalEFGK involved in maltose/maltodextrin import. Binds maltose and higher maltodextrins such as maltotriose.

**Cellular Location**

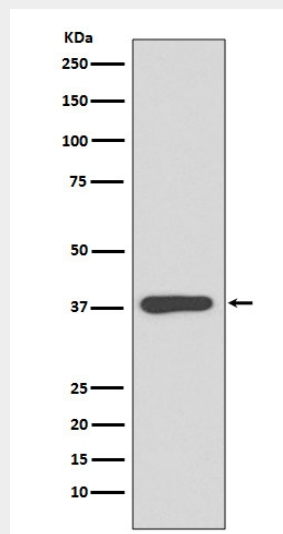
Periplasm.

**Anti-MBP Rabbit Monoclonal Antibody - Protocols**

Provided below are standard protocols that you may find useful for product applications.

- [Western Blot](#)
- [Blocking Peptides](#)
- [Dot Blot](#)
- [Immunohistochemistry](#)
- [Immunofluorescence](#)
- [Immunoprecipitation](#)
- [Flow Cytometry](#)
- [Cell Culture](#)

**Anti-MBP Rabbit Monoclonal Antibody - Images**



Western blot analysis of MBP expression in E. coli lysate (M30934-2).

Electrophoresis was performed on a 5-20% SDS-PAGE gel at 70V (Stacking gel) / 90V (Resolving gel) for 2-3 hours. The sample well of each lane was loaded with 50ug of sample under reducing conditions.

After Electrophoresis, proteins were transferred to a Nitrocellulose membrane at 150mA for 50-90 minutes. Blocked the membrane with 5% Non-fat Milk/ TBS for 1.5 hour at RT. The membrane was incubated with rabbit anti-malE monoclonal antibody (Catalog # M30934-2) overnight at 4°C, then washed with TBS-0.1%Tween 3 times with 5 minutes each and probed with a goat anti-rabbit IgG-HRP secondary antibody at a dilution of 1:10000 for 1.5 hour at RT. The signal is developed using an Enhanced Chemiluminescent detection (ECL) kit (Catalog # EK1002) with Tanon 5200 system. A specific band was detected for malE