

Anti-GR NR3C1 Rabbit Monoclonal Antibody
Catalog # ABO13217

Specification

Anti-GR NR3C1 Rabbit Monoclonal Antibody - Product Information

| | |
|-------------------|------------------------|
| Application | WB, FC |
| Primary Accession | P04150 |
| Host | Rabbit |
| Isotype | Rabbit IgG |
| Reactivity | Rat, Human, Mouse |
| Clonality | Monoclonal |
| Format | Liquid |

Description

Anti-GR NR3C1 Rabbit Monoclonal Antibody . Tested in WB, Flow Cytometry applications. This antibody reacts with Human, Mouse, Rat.

Anti-GR NR3C1 Rabbit Monoclonal Antibody - Additional Information

Gene ID 2908

Other Names

Glucocorticoid receptor, GR, Nuclear receptor subfamily 3 group C member 1, NR3C1 ([HGNC:7978](http://www.genenames.org/cgi-bin/gene_symbol_report?hgnc_id=7978)), GRL

Calculated MW

85659 MW KDa

Application Details

WB 1:1000-1:5000
FC 1:50

Subcellular Localization

Cytoplasm. Mitochondrion. Nucleus. Cytoplasmic in the absence of ligand, nuclear after ligand-binding.

Tissue Specificity

Widely expressed. In the heart, detected in left and right atria, left and right ventricles, aorta, apex, intraventricular septum, and atrioventricular node as well as whole adult and fetal heart..

Contents

Rabbit IgG in phosphate buffered saline, pH 7.4, 150mM NaCl, 0.02% sodium azide and 50% glycerol, 0.4-0.5mg/ml BSA.

Immunogen

A synthesized peptide derived from human GR

Purification

Affinity-chromatography

Storage

Store at -20°C for one year. For short term storage and frequent use, store at 4°C for up to one month. Avoid repeated freeze-thaw cycles.

Anti-GR NR3C1 Rabbit Monoclonal Antibody - Protein Information

Name NR3C1 ([HGNC:7978](#))

Synonyms GRL

Function

Receptor for glucocorticoids (GC) (PubMed: [27120390](http://www.uniprot.org/citations/27120390), PubMed: [37478846](http://www.uniprot.org/citations/37478846)). Has a dual mode of action: as a transcription factor that binds to glucocorticoid response elements (GRE), both for nuclear and mitochondrial DNA, and as a modulator of other transcription factors (PubMed: [28139699](http://www.uniprot.org/citations/28139699)). Affects inflammatory responses, cellular proliferation and differentiation in target tissues. Involved in chromatin remodeling (PubMed: [9590696](http://www.uniprot.org/citations/9590696)). Plays a role in rapid mRNA degradation by binding to the 5' UTR of target mRNAs and interacting with PNR2 in a ligand-dependent manner which recruits the RNA helicase UPF1 and the mRNA-decapping enzyme DCP1A, leading to RNA decay (PubMed: [25775514](http://www.uniprot.org/citations/25775514)). Could act as a coactivator for STAT5-dependent transcription upon growth hormone (GH) stimulation and could reveal an essential role of hepatic GR in the control of body growth (By similarity).

Cellular Location

[Isoform Alpha]: Cytoplasm. Nucleus. Mitochondrion. Cytoplasm, cytoskeleton, spindle. Cytoplasm, cytoskeleton, microtubule organizing center, centrosome. Chromosome {ECO:0000250|UniProtKB:P06537}. Nucleus, nucleoplasm {ECO:0000250|UniProtKB:P06537}. Note=After ligand activation, translocates from the cytoplasm to the nucleus (PubMed:30698747). The hormone-occupied receptor undergoes rapid exchange between chromatin and the nucleoplasmic compartment (By similarity). In the presence of NR1D1 shows a time-dependent subcellular localization, localizing to the cytoplasm at ZT8 and to the nucleus at ZT20 (By similarity). Lacks this diurnal pattern of localization in the absence of NR1D1, localizing to both nucleus and the cytoplasm at ZT8 and ZT20 (By similarity). Upon dexamethasone binding associates with the glucocorticoid response elements of target genes (By similarity) {ECO:0000250|UniProtKB:P06537, ECO:0000269|PubMed:30698747} [Isoform Alpha-B]: Nucleus. Cytoplasm Note=After ligand activation, translocates from the cytoplasm to the nucleus.

Tissue Location

Widely expressed including bone, stomach, lung, liver, colon, breast, ovary, pancreas and kidney (PubMed:25847991). In the heart, detected in left and right atria, left and right ventricles, aorta, apex, intraventricular septum, and atrioventricular node as well as whole adult and fetal heart (PubMed:10902803) [Isoform Alpha-2]: Widely expressed.

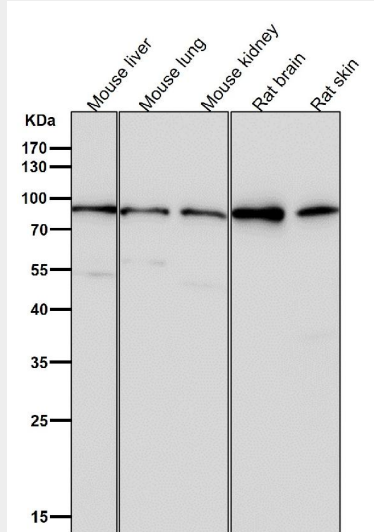
Anti-GR NR3C1 Rabbit Monoclonal Antibody - Protocols

Provided below are standard protocols that you may find useful for product applications.

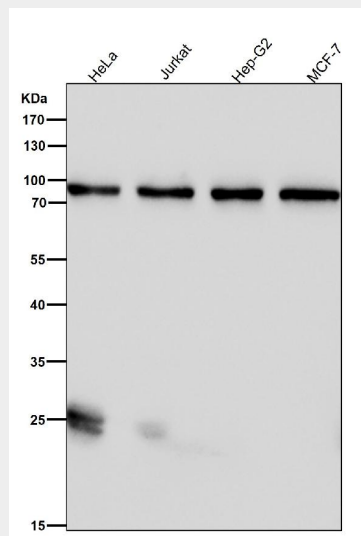
- [Western Blot](#)
- [Blocking Peptides](#)
- [Dot Blot](#)

- [Immunohistochemistry](#)
- [Immunofluorescence](#)
- [Immunoprecipitation](#)
- [Flow Cytometry](#)
- [Cell Culture](#)

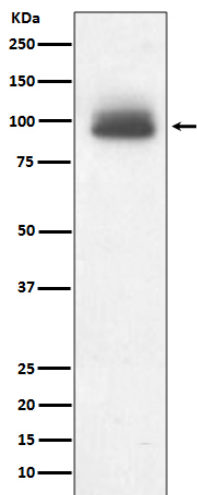
Anti-GR NR3C1 Rabbit Monoclonal Antibody - Images



All lanes use the Antibody at 1:3W dilution for 1 hour at room temperature.



All lanes use the Antibody at 1:3W dilution for 1 hour at room temperature.



Western blot analysis of GR expression in A431 cell lysate.