

Anti-Rb RB1 Rabbit Monoclonal Antibody
Catalog # ABO13216

Specification

Anti-Rb RB1 Rabbit Monoclonal Antibody - Product Information

| | |
|-------------------|------------------------|
| Application | WB, IHC, IF, ICC, IP |
| Primary Accession | P06400 |
| Host | Rabbit |
| Isotype | Rabbit IgG |
| Reactivity | Human, Mouse |
| Clonality | Monoclonal |
| Format | Liquid |

Description

Anti-Rb RB1 Rabbit Monoclonal Antibody . Tested in WB, IHC, ICC/IF, IP applications. This antibody reacts with Human, Mouse.

Anti-Rb RB1 Rabbit Monoclonal Antibody - Additional Information

Gene ID 5925

Other Names

Retinoblastoma-associated protein, p105-Rb, p110-RB1, pRb, Rb, pp110, RB1

Calculated MW

106159 MW KDa

Application Details

WB 1:1000-1:2000
IHC 1:100-1:500
ICC/IF 1:100-1:500
IP 1:50

Subcellular Localization

Nucleus.

Tissue Specificity

Expressed in the retina.

Contents

Rabbit IgG in phosphate buffered saline, pH 7.4, 150mM NaCl, 0.02% sodium azide and 50% glycerol, 0.4-0.5mg/ml BSA.

Immunogen

A synthesized peptide derived from human Rb

Purification

Affinity-chromatography

Storage

Store at -20°C for one year. For short term storage and frequent use, store at 4°C for up to one month. Avoid repeated freeze-thaw cycles.

Anti-Rb RB1 Rabbit Monoclonal Antibody - Protein Information

Name RB1

Function

Tumor suppressor that is a key regulator of the G1/S transition of the cell cycle (PubMed:10499802). The hypophosphorylated form binds transcription regulators of the E2F family, preventing transcription of E2F-responsive genes (PubMed:10499802). Both physically blocks E2Fs transactivating domain and recruits chromatin-modifying enzymes that actively repress transcription (PubMed:10499802). Cyclin and CDK-dependent phosphorylation of RB1 induces its dissociation from E2Fs, thereby activating transcription of E2F responsive genes and triggering entry into S phase (PubMed:10499802). RB1 also promotes the G0-G1 transition upon phosphorylation and activation by CDK3/cyclin-C (PubMed:15084261). Directly involved in heterochromatin formation by maintaining overall chromatin structure and, in particular, that of constitutive heterochromatin by stabilizing histone methylation. Recruits and targets histone methyltransferases SUV39H1, KMT5B and KMT5C, leading to epigenetic transcriptional repression. Controls histone H4 'Lys-20' trimethylation. Inhibits the intrinsic kinase activity of TAF1. Mediates transcriptional repression by SMARCA4/BRG1 by recruiting a histone deacetylase (HDAC) complex to the c-FOS promoter. In resting neurons, transcription of the c-FOS promoter is inhibited by BRG1-dependent recruitment of a phospho-RB1-HDAC1 repressor complex. Upon calcium influx, RB1 is dephosphorylated by calcineurin, which leads to release of the repressor complex (By similarity).

Cellular Location

Nucleus. Cytoplasm {ECO:0000250|UniProtKB:P13405}. Note=During keratinocyte differentiation, acetylation by KAT2B/PCAF is required for nuclear localization (PubMed:20940255). Localizes to the cytoplasm when hyperphosphorylated (By similarity). {ECO:0000250|UniProtKB:P13405, ECO:0000269|PubMed:20940255}

Tissue Location

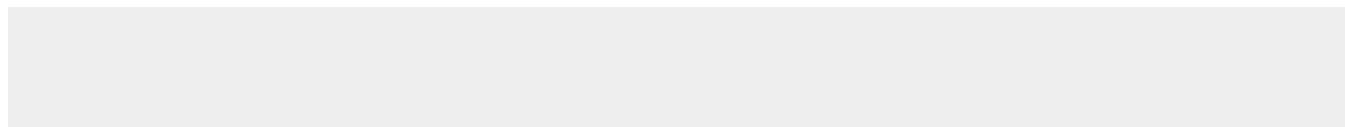
Expressed in the retina. Expressed in foreskin keratinocytes (at protein level) (PubMed:20940255)

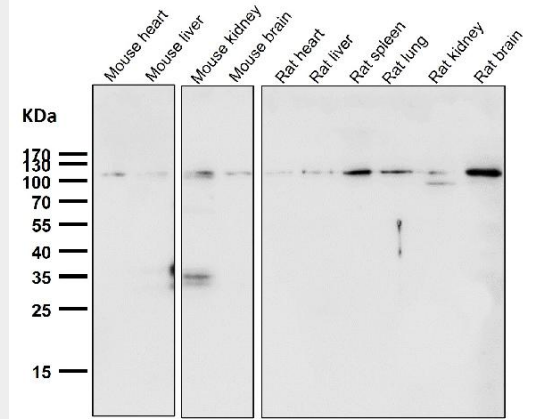
Anti-Rb RB1 Rabbit Monoclonal Antibody - Protocols

Provided below are standard protocols that you may find useful for product applications.

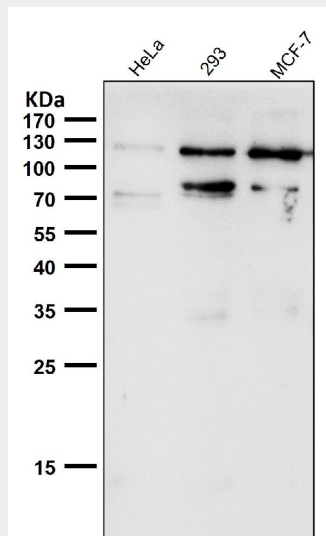
- [Western Blot](#)
- [Blocking Peptides](#)
- [Dot Blot](#)
- [Immunohistochemistry](#)
- [Immunofluorescence](#)
- [Immunoprecipitation](#)
- [Flow Cytometry](#)
- [Cell Culture](#)

Anti-Rb RB1 Rabbit Monoclonal Antibody - Images

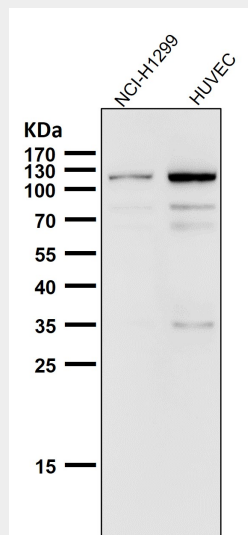




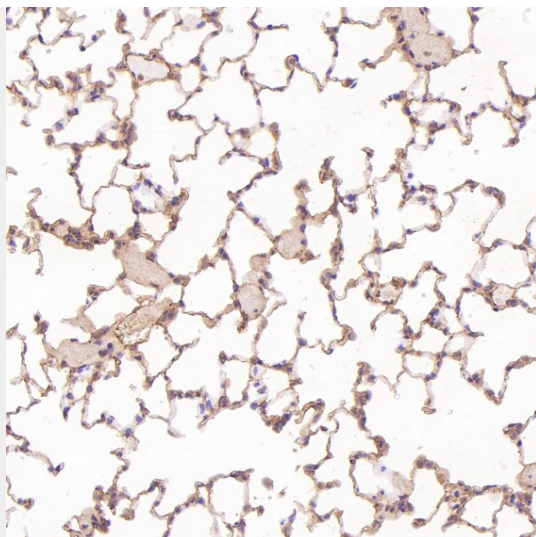
All lanes use the Antibody at 1:3K dilution for 1 hour at room temperature.



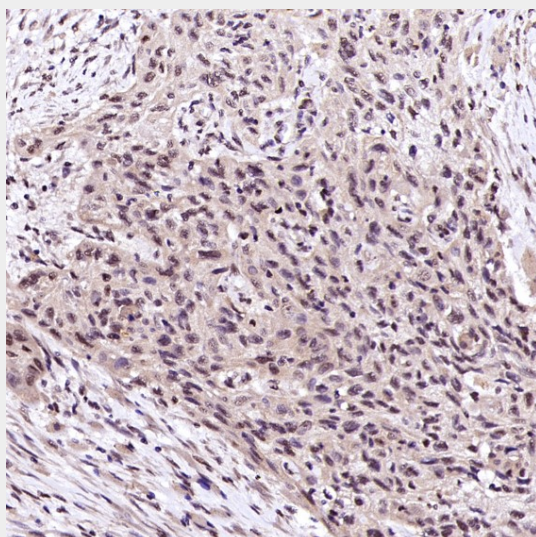
All lanes use the Antibody at 1:3K dilution for 1 hour at room temperature.



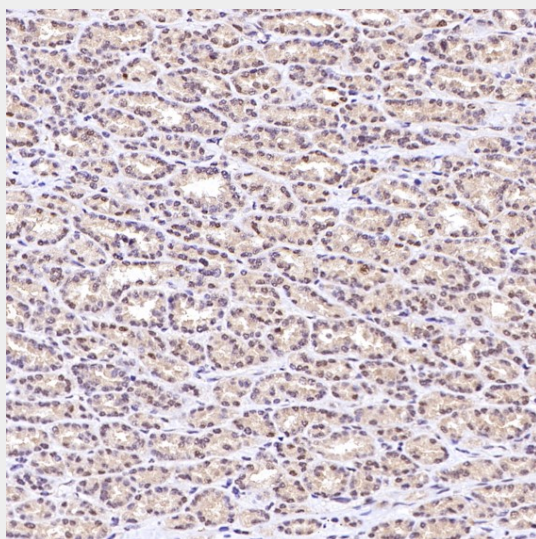
All lanes use the Antibody at 1:3K dilution for 1 hour at room temperature.



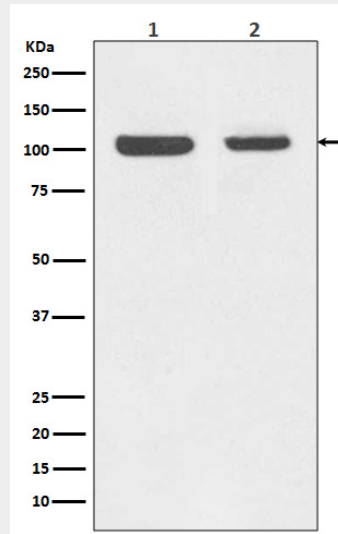
Immunohistochemical analysis of paraffin-embedded Rat lung, using the Antibody at 1:250 dilution.



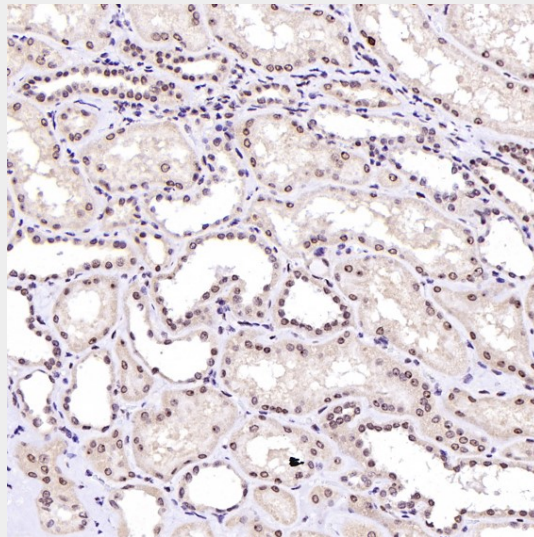
Immunohistochemical analysis of paraffin-embedded Human tongue cancer, using the Antibody at 1:250 dilution.



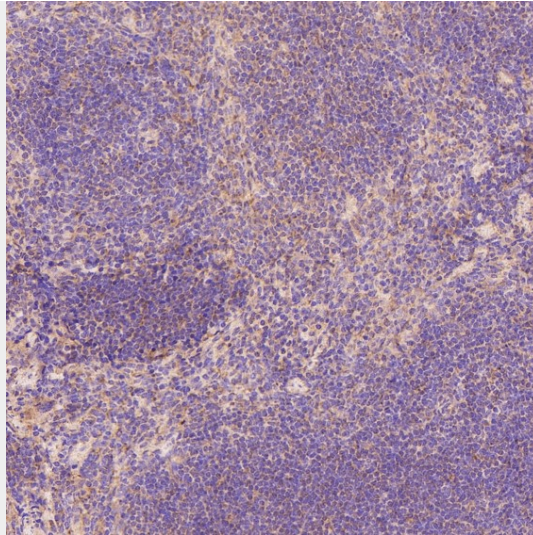
Immunohistochemical analysis of paraffin-embedded Human renal cancer, using the Antibody at 1:250 dilution.



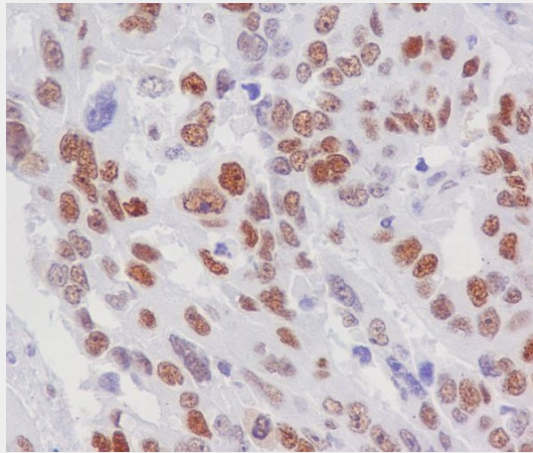
Western blot analysis of Retinoblastoma expression in (1) Jurkat cell lysate; (2) MCF-7 cell lysate.



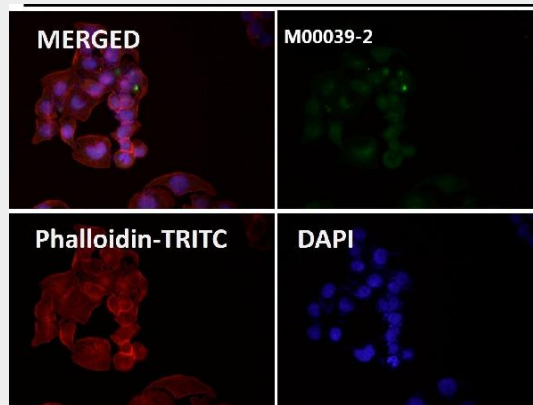
Immunohistochemical analysis of paraffin-embedded Human kidney, using the Antibody at 1:1000 dilution.



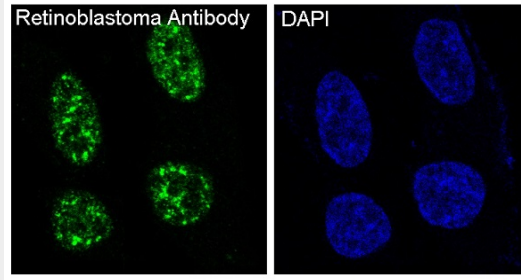
Immunohistochemical analysis of paraffin-embedded Mouse spleen, using the Antibody at 1:250 dilution.



Immunohistochemical analysis of paraffin-embedded human lung cancer, using Retinoblastoma Antibody.



Immunofluorescent analysis using the Antibody at 1:50 dilution.



Immunofluorescent analysis of SH-SY5Y cells, using Retinoblastoma Antibody.