

Anti-C9/Complement Component C9 Rabbit Monoclonal Antibody
Catalog # ABO13214

Specification

Anti-C9/Complement Component C9 Rabbit Monoclonal Antibody - Product Information

Application	WB, IHC, IP
Primary Accession	P02748
Host	Rabbit
Isotype	Rabbit IgG
Reactivity	Human
Clonality	Monoclonal
Format	Liquid

Description

Anti-C9/Complement Component C9 Rabbit Monoclonal Antibody . Tested in WB, IHC, IP applications. This antibody reacts with Human.

Anti-C9/Complement Component C9 Rabbit Monoclonal Antibody - Additional Information

Gene ID 735

Other Names

Complement component C9, Complement component C9a, Complement component C9b, C9

Calculated MW

63173 MW KDa

Application Details

WB 1:500-1:2000
IHC 1:50-1:200
IP 1:50

Subcellular Localization

Secreted. Cell membrane; Multi-pass membrane protein. Secreted as soluble monomer. Oligomerizes at target membranes, forming a pre-pore. A conformation change then leads to the formation of a 100 Angstrom diameter pore.

Tissue Specificity

Plasma.

Contents

Rabbit IgG in phosphate buffered saline, pH 7.4, 150mM NaCl, 0.02% sodium azide and 50% glycerol, 0.4-0.5mg/ml BSA.

Immunogen

A synthesized peptide derived from human C9

Purification

Affinity-chromatography

Storage

Store at -20°C for one year. For short term storage and frequent use, store at 4°C for

up to one month. Avoid repeated
freeze-thaw cycles.

Anti-C9/Complement Component C9 Rabbit Monoclonal Antibody - Protein Information

Name C9

Function

Constituent of the membrane attack complex (MAC) that plays a key role in the innate and adaptive immune response by forming pores in the plasma membrane of target cells (PubMed: 26841934, PubMed: 9212048, PubMed: 9634479). C9 is the pore-forming subunit of the MAC (PubMed: 26841934, PubMed: 30111885, PubMed: 4055801).

Cellular Location

Secreted. Target cell membrane; Multi-pass membrane protein. Note=Secreted as soluble monomer Oligomerizes at target membranes, forming a pre-pore. A conformation change then leads to the formation of a 100 Angstrom diameter pore

Tissue Location

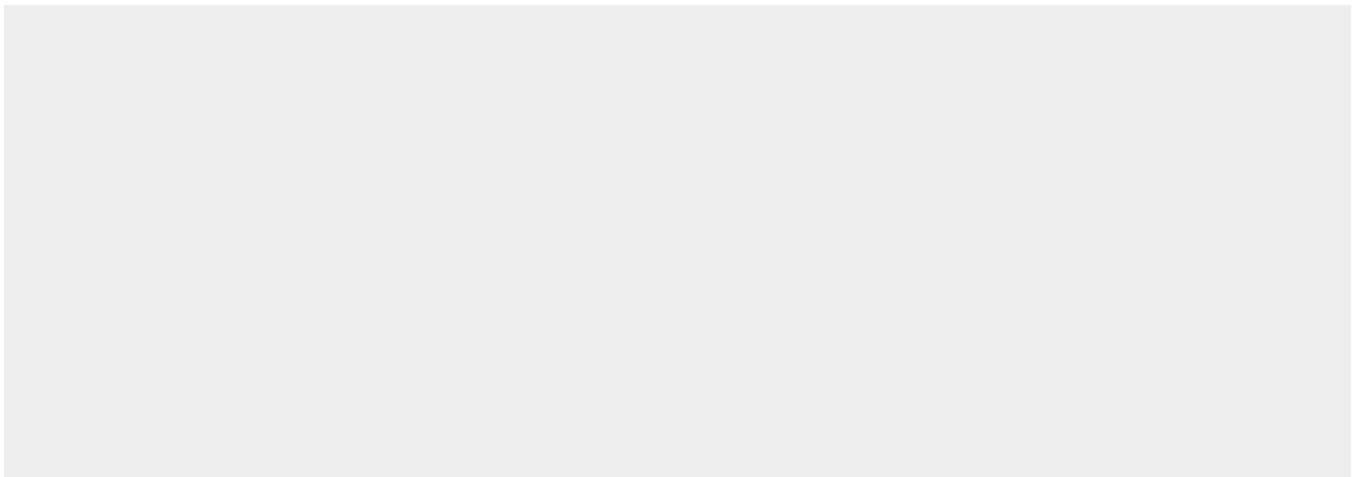
Plasma (at protein level).

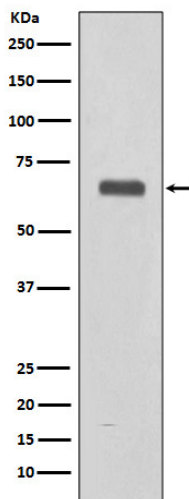
Anti-C9/Complement Component C9 Rabbit Monoclonal Antibody - Protocols

Provided below are standard protocols that you may find useful for product applications.

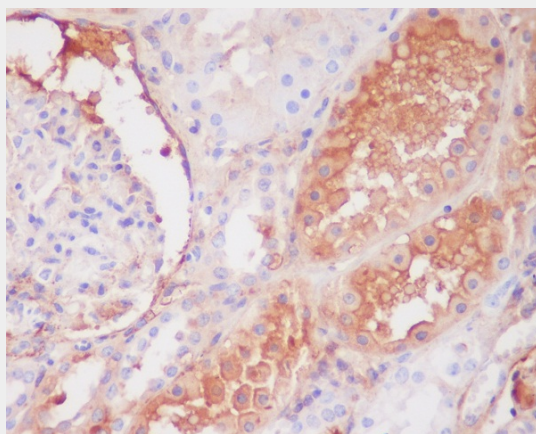
- [Western Blot](#)
- [Blocking Peptides](#)
- [Dot Blot](#)
- [Immunohistochemistry](#)
- [Immunofluorescence](#)
- [Immunoprecipitation](#)
- [Flow Cytometry](#)
- [Cell Culture](#)

Anti-C9/Complement Component C9 Rabbit Monoclonal Antibody - Images





Western blot analysis of C9 expression in Human fetal liver lysate.



Immunohistochemical analysis of paraffin-embedded human kidney, using C9 Antibody.