

**Anti-Phospho-v-Myb + c-Myb (S11) Rabbit Monoclonal Antibody**  
Catalog # ABO13200**Specification****Anti-Phospho-v-Myb + c-Myb (S11) Rabbit Monoclonal Antibody - Product Information**

Application	WB, IHC, IF, ICC, IP
Primary Accession	<a href="#">P10242</a>
Host	Rabbit
Isotype	Rabbit IgG
Reactivity	Human
Clonality	Monoclonal
Format	Liquid

**Description**

Anti-Phospho-v-Myb + c-Myb (S11) Rabbit Monoclonal Antibody . Tested in WB, IHC, ICC/IF, IP applications. This antibody reacts with Human.

**Anti-Phospho-v-Myb + c-Myb (S11) Rabbit Monoclonal Antibody - Additional Information**

**Gene ID** 4602

**Other Names**

Transcriptional activator Myb, Proto-oncogene c-Myb, MYB

**Calculated MW**

72341 MW KDa

**Application Details**

WB 1:1000-1:2000<br>IHC 1:50-1:200<br>ICC/IF 1:50-1:200<br>IP 1:30

**Subcellular Localization**

Nucleus.

**Contents**

Rabbit IgG in phosphate buffered saline, pH 7.4, 150mM NaCl, 0.02% sodium azide and 50% glycerol, 0.4-0.5mg/ml BSA.

**Immunogen**

A synthesized peptide derived from human Myb

**Purification**

Affinity-chromatography

**Storage**

**Store at -20°C for one year. For short term storage and frequent use, store at 4°C for up to one month. Avoid repeated freeze-thaw cycles.**

**Anti-Phospho-v-Myb + c-Myb (S11) Rabbit Monoclonal Antibody - Protein Information**

**Name** MYB

**Function**

Transcriptional activator; DNA-binding protein that specifically recognize the sequence 5'-YAAC[GT]G-3'. Plays an important role in the control of proliferation and differentiation of hematopoietic progenitor cells.

**Cellular Location**

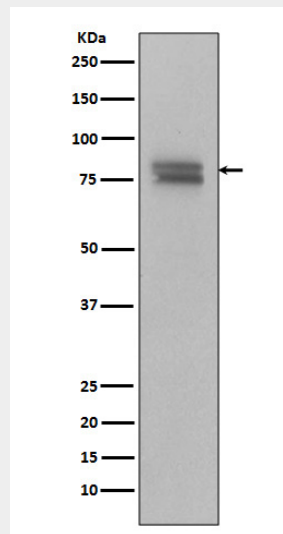
Nucleus {ECO:0000255|PROSITE-ProRule:PRU00625, ECO:0000269|PubMed:19646965}

**Anti-Phospho-v-Myb + c-Myb (S11) Rabbit Monoclonal Antibody - Protocols**

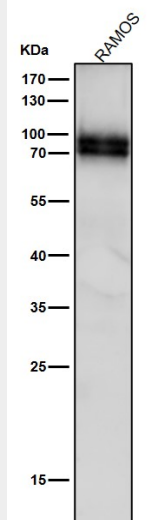
Provided below are standard protocols that you may find useful for product applications.

- [Western Blot](#)
- [Blocking Peptides](#)
- [Dot Blot](#)
- [Immunohistochemistry](#)
- [Immunofluorescence](#)
- [Immunoprecipitation](#)
- [Flow Cytometry](#)
- [Cell Culture](#)

**Anti-Phospho-v-Myb + c-Myb (S11) Rabbit Monoclonal Antibody - Images**



Western blot analysis of Phospho-v-Myb + c-Myb (S11) Antibody expression in Ramos cell lysate.



All lanes use the Antibody at 1:2K dilution for 1 hour at room temperature.