

## Anti-Phospho-Paxillin (Y118) PXN Rabbit Monoclonal Antibody Catalog # ABO13185

### Specification

---

#### Anti-Phospho-Paxillin (Y118) PXN Rabbit Monoclonal Antibody - Product Information

Application	WB
Primary Accession	<a href="#">P49023</a>
Host	Rabbit
Isotype	Rabbit IgG
Reactivity	Rat, Human, Mouse
Clonality	Monoclonal
Format	Liquid

#### Description

Anti-Phospho-Paxillin (Y118) PXN Rabbit Monoclonal Antibody . Tested in WB application. This antibody reacts with Human, Mouse, Rat.

#### Anti-Phospho-Paxillin (Y118) PXN Rabbit Monoclonal Antibody - Additional Information

**Gene ID** 5829

#### Other Names

Paxillin, PXN

#### Calculated MW

64505 MW KDa

#### Application Details

WB 1:1000-1:2000

#### Subcellular Localization

Cytoplasm, cytoskeleton. Cell junction, focal adhesion. Cytoplasm, cell cortex. Colocalizes with integrins at the cell periphery..

#### Contents

Rabbit IgG in phosphate buffered saline, pH 7.4, 150mM NaCl, 0.02% sodium azide and 50% glycerol, 0.4-0.5mg/ml BSA.

#### Immunogen

A synthesized peptide derived from human Paxillin

#### Purification

Affinity-chromatography

#### Storage

**Store at -20°C for one year. For short term storage and frequent use, store at 4°C for up to one month. Avoid repeated freeze-thaw cycles.**

#### Anti-Phospho-Paxillin (Y118) PXN Rabbit Monoclonal Antibody - Protein Information

**Name** PXN**Function**

Cytoskeletal protein involved in actin-membrane attachment at sites of cell adhesion to the extracellular matrix (focal adhesion). Recruits other proteins such as TRIM15 to focal adhesion.

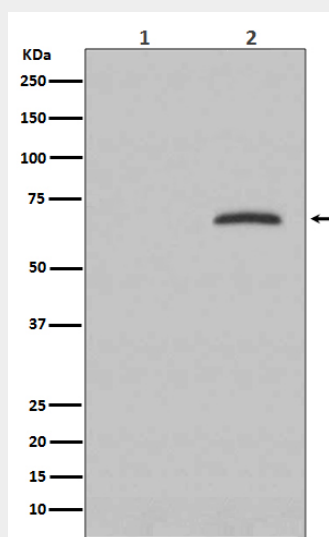
**Cellular Location**

Cytoplasm, cytoskeleton. Cell junction, focal adhesion. Cytoplasm, cell cortex {ECO:0000250|UniProtKB:Q8VI36}. Note=Colocalizes with integrins at the cell periphery. Colocalize with PXN to membrane ruffles and the leading edge of migrating cells (PubMed:23128389). {ECO:0000250, ECO:0000269|PubMed:23128389}

**Anti-Phospho-Paxillin (Y118) PXN Rabbit Monoclonal Antibody - Protocols**

Provided below are standard protocols that you may find useful for product applications.

- [Western Blot](#)
- [Blocking Peptides](#)
- [Dot Blot](#)
- [Immunohistochemistry](#)
- [Immunofluorescence](#)
- [Immunoprecipitation](#)
- [Flow Cytometry](#)
- [Cell Culture](#)

**Anti-Phospho-Paxillin (Y118) PXN Rabbit Monoclonal Antibody - Images**

Western blot analysis of Phospho-Paxillin (Y118) expression in (1) HeLa cell lysate; (2) HeLa cell treated with pervanadate.