

Anti-Phospho-EGFR (Y1092) Rabbit Monoclonal Antibody
Catalog # ABO13166**Specification****Anti-Phospho-EGFR (Y1092) Rabbit Monoclonal Antibody - Product Information**

Application	WB, IF, ICC, IP, FC
Primary Accession	P00533
Host	Rabbit
Isotype	Rabbit IgG
Reactivity	Human
Clonality	Monoclonal
Format	Liquid

Description

Anti-Phospho-EGFR (Y1092) Rabbit Monoclonal Antibody . Tested in WB, ICC/IF, IP, Flow Cytometry applications. This antibody reacts with Human.

Anti-Phospho-EGFR (Y1092) Rabbit Monoclonal Antibody - Additional Information

Gene ID 1956

Other Names

Epidermal growth factor receptor, 2.7.10.1, Proto-oncogene c-ErbB-1, Receptor tyrosine-protein kinase erbB-1, EGFR (HGNC:3236), ERBB, ERBB1, HER1

Calculated MW

134277 MW KDa

Application Details

WB 1:1000-1:2000
ICC/IF 1:50-1:200
IP 1:100
FC 1:40

Subcellular Localization

Cell membrane; Single-pass type I membrane protein. Endoplasmic reticulum membrane; Single-pass type I membrane protein. Golgi apparatus membrane; Single-pass type I membrane protein. Nucleus membrane; Single-pass type I membrane protein. Endosome. Endosome membrane. Nucleus. In response to EGF, translocated from the cell membrane to the nucleus via Golgi and ER. Endocytosed upon activation by ligand. Colocalized with GPER1 in the nucleus of estrogen agonist-induced cancer-associated fibroblasts (CAF).

Tissue Specificity

Ubiquitously expressed. Isoform 2 is also expressed in ovarian cancers..

Contents

Rabbit IgG in phosphate buffered saline, pH 7.4, 150mM NaCl, 0.02% sodium azide and 50% glycerol, 0.4-0.5mg/ml BSA.

Immunogen

A synthesized peptide derived from human EGFR Full-length sequence 1210aa around the

phosphorylation site of Tyrosine 1092

Purification

Affinity-chromatography

Storage

Store at -20°C for one year. For short term storage and frequent use, store at 4°C for up to one month. Avoid repeated freeze-thaw cycles.

Anti-Phospho-EGFR (Y1092) Rabbit Monoclonal Antibody - Protein Information

Name EGFR ([HGNC:3236](#))

Synonyms ERBB, ERBB1, HER1

Function

Receptor tyrosine kinase binding ligands of the EGF family and activating several signaling cascades to convert extracellular cues into appropriate cellular responses (PubMed:[10805725](http://www.uniprot.org/citations/10805725), PubMed:[27153536](http://www.uniprot.org/citations/27153536), PubMed:[2790960](http://www.uniprot.org/citations/2790960), PubMed:[35538033](http://www.uniprot.org/citations/35538033)). Known ligands include EGF, TGFA/TGF- alpha, AREG, epigen/EPGN, BTC/betacellulin, epiregulin/EREG and HBEGF/heparin-binding EGF (PubMed:[12297049](http://www.uniprot.org/citations/12297049), PubMed:[15611079](http://www.uniprot.org/citations/15611079), PubMed:[17909029](http://www.uniprot.org/citations/17909029), PubMed:[20837704](http://www.uniprot.org/citations/20837704), PubMed:[27153536](http://www.uniprot.org/citations/27153536), PubMed:[2790960](http://www.uniprot.org/citations/2790960), PubMed:[7679104](http://www.uniprot.org/citations/7679104), PubMed:[8144591](http://www.uniprot.org/citations/8144591), PubMed:[9419975](http://www.uniprot.org/citations/9419975)). Ligand binding triggers receptor homo- and/or heterodimerization and autophosphorylation on key cytoplasmic residues. The phosphorylated receptor recruits adapter proteins like GRB2 which in turn activates complex downstream signaling cascades. Activates at least 4 major downstream signaling cascades including the RAS-RAF-MEK-ERK, PI3 kinase-AKT, PLCgamma-PKC and STATs modules (PubMed:[27153536](http://www.uniprot.org/citations/27153536)). May also activate the NF-kappa-B signaling cascade (PubMed:[11116146](http://www.uniprot.org/citations/11116146)). Also directly phosphorylates other proteins like RGS16, activating its GTPase activity and probably coupling the EGF receptor signaling to the G protein-coupled receptor signaling (PubMed:[11602604](http://www.uniprot.org/citations/11602604)). Also phosphorylates MUC1 and increases its interaction with SRC and CTNNB1/beta-catenin (PubMed:[11483589](http://www.uniprot.org/citations/11483589)). Positively regulates cell migration via interaction with CCDC88A/GIV which retains EGFR at the cell membrane following ligand stimulation, promoting EGFR signaling which triggers cell migration (PubMed:[20462955](http://www.uniprot.org/citations/20462955)). Plays a role in enhancing learning and memory performance (By similarity). Plays a role in mammalian pain signaling (long-lasting hypersensitivity) (By similarity).

Cellular Location

Cell membrane; Single-pass type I membrane protein. Endoplasmic reticulum membrane; Single-pass type I membrane protein Golgi apparatus membrane; Single-pass type I membrane protein. Nucleus membrane; Single-pass type I membrane protein. Endosome. Endosome

membrane. Nucleus. Note=In response to EGF, translocated from the cell membrane to the nucleus via Golgi and ER (PubMed:17909029, PubMed:20674546). Endocytosed upon activation by ligand (PubMed:17182860, PubMed:17909029, PubMed:27153536, PubMed:2790960). Colocalized with GPER1 in the nucleus of estrogen agonist-induced cancer-associated fibroblasts (CAF) (PubMed:20551055)

Tissue Location

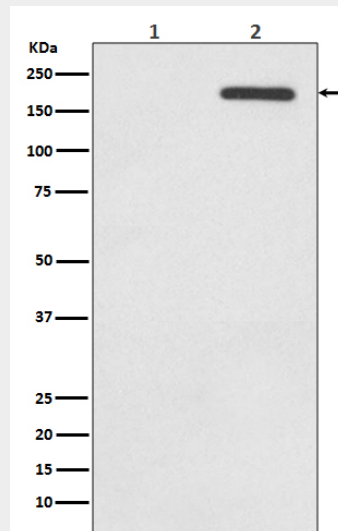
Ubiquitously expressed. Isoform 2 is also expressed in ovarian cancers.

Anti-Phospho-EGFR (Y1092) Rabbit Monoclonal Antibody - Protocols

Provided below are standard protocols that you may find useful for product applications.

- [Western Blot](#)
- [Blocking Peptides](#)
- [Dot Blot](#)
- [Immunohistochemistry](#)
- [Immunofluorescence](#)
- [Immunoprecipitation](#)
- [Flow Cytometry](#)
- [Cell Culture](#)

Anti-Phospho-EGFR (Y1092) Rabbit Monoclonal Antibody - Images



Western blot analysis of Phospho-EGFR (Y1092) expression in (1) A431 cell lysate; (2) A431 cell treated with EGF lysate.