

**Anti-Phospho-EGFR (Y1092) Rabbit Monoclonal Antibody**  
Catalog # ABO13157**Specification****Anti-Phospho-EGFR (Y1092) Rabbit Monoclonal Antibody - Product Information**

Application	WB, IHC, IF, ICC
Primary Accession	<a href="#">P00533</a>
Host	Rabbit
Isotype	Rabbit IgG
Reactivity	Human, Mouse
Clonality	Monoclonal
Format	Liquid

**Description**

Anti-Phospho-EGFR (Y1092) Rabbit Monoclonal Antibody . Tested in WB, IHC, ICC/IF applications. This antibody reacts with Human, Mouse.

**Anti-Phospho-EGFR (Y1092) Rabbit Monoclonal Antibody - Additional Information**

**Gene ID** 1956

**Other Names**

Epidermal growth factor receptor, 2.7.10.1, Proto-oncogene c-ErbB-1, Receptor tyrosine-protein kinase erbB-1, EGFR (<a href="http://www.genenames.org/cgi-bin/gene\_symbol\_report?hgnc\_id=3236" target="\_blank">HGNC:3236</a>), ERBB, ERBB1, HER1

**Calculated MW**

134277 MW KDa

**Application Details**

WB 1:500-1:2000<br>IHC 1:50-1:200<br>ICC/IF 1:50-1:200

**Subcellular Localization**

Cell membrane; Single-pass type I membrane protein. Endoplasmic reticulum membrane; Single-pass type I membrane protein. Golgi apparatus membrane; Single-pass type I membrane protein. Nucleus membrane; Single-pass type I membrane protein. Endosome. Endosome membrane. Nucleus. In response to EGF, translocated from the cell membrane to the nucleus via Golgi and ER. Endocytosed upon activation by ligand. Colocalized with GPER1 in the nucleus of estrogen agonist-induced cancer-associated fibroblasts (CAF).

**Tissue Specificity**

Ubiquitously expressed. Isoform 2 is also expressed in ovarian cancers..

**Contents**

Rabbit IgG in phosphate buffered saline, pH 7.4, 150mM NaCl, 0.02% sodium azide and 50% glycerol, 0.4-0.5mg/ml BSA.

**Immunogen**

A synthesized peptide derived from human Phospho-EGFR (Y1092)

## Purification

Affinity-chromatography

## Storage

Store at -20°C for one year. For short term storage and frequent use, store at 4°C for up to one month. Avoid repeated freeze-thaw cycles.

## Anti-Phospho-EGFR (Y1092) Rabbit Monoclonal Antibody - Protein Information

Name EGFR ([HGNC:3236](#))

Synonyms ERBB, ERBB1, HER1

## Function

Receptor tyrosine kinase binding ligands of the EGF family and activating several signaling cascades to convert extracellular cues into appropriate cellular responses (PubMed:<a href="http://www.uniprot.org/citations/10805725" target="\_blank">10805725</a>, PubMed:<a href="http://www.uniprot.org/citations/27153536" target="\_blank">27153536</a>, PubMed:<a href="http://www.uniprot.org/citations/2790960" target="\_blank">2790960</a>, PubMed:<a href="http://www.uniprot.org/citations/35538033" target="\_blank">35538033</a>). Known ligands include EGF, TGFA/TGF- alpha, AREG, epigen/EPGN, BTC/betacellulin, epiregulin/EREG and HBEGF/heparin-binding EGF (PubMed:<a href="http://www.uniprot.org/citations/12297049" target="\_blank">12297049</a>, PubMed:<a href="http://www.uniprot.org/citations/15611079" target="\_blank">15611079</a>, PubMed:<a href="http://www.uniprot.org/citations/17909029" target="\_blank">17909029</a>, PubMed:<a href="http://www.uniprot.org/citations/20837704" target="\_blank">20837704</a>, PubMed:<a href="http://www.uniprot.org/citations/27153536" target="\_blank">27153536</a>, PubMed:<a href="http://www.uniprot.org/citations/2790960" target="\_blank">2790960</a>, PubMed:<a href="http://www.uniprot.org/citations/7679104" target="\_blank">7679104</a>, PubMed:<a href="http://www.uniprot.org/citations/8144591" target="\_blank">8144591</a>, PubMed:<a href="http://www.uniprot.org/citations/9419975" target="\_blank">9419975</a>). Ligand binding triggers receptor homo- and/or heterodimerization and autophosphorylation on key cytoplasmic residues. The phosphorylated receptor recruits adapter proteins like GRB2 which in turn activates complex downstream signaling cascades. Activates at least 4 major downstream signaling cascades including the RAS-RAF-MEK-ERK, PI3 kinase-AKT, PLCgamma-PKC and STATs modules (PubMed:<a href="http://www.uniprot.org/citations/27153536" target="\_blank">27153536</a>). May also activate the NF-kappa-B signaling cascade (PubMed:<a href="http://www.uniprot.org/citations/11116146" target="\_blank">11116146</a>). Also directly phosphorylates other proteins like RGS16, activating its GTPase activity and probably coupling the EGF receptor signaling to the G protein-coupled receptor signaling (PubMed:<a href="http://www.uniprot.org/citations/11602604" target="\_blank">11602604</a>). Also phosphorylates MUC1 and increases its interaction with SRC and CTNNB1/beta-catenin (PubMed:<a href="http://www.uniprot.org/citations/11483589" target="\_blank">11483589</a>). Positively regulates cell migration via interaction with CCDC88A/GIV which retains EGFR at the cell membrane following ligand stimulation, promoting EGFR signaling which triggers cell migration (PubMed:<a href="http://www.uniprot.org/citations/20462955" target="\_blank">20462955</a>). Plays a role in enhancing learning and memory performance (By similarity). Plays a role in mammalian pain signaling (long-lasting hypersensitivity) (By similarity).

## Cellular Location

Cell membrane; Single-pass type I membrane protein. Endoplasmic reticulum membrane; Single-pass type I membrane protein Golgi apparatus membrane; Single-pass type I membrane protein. Nucleus membrane; Single-pass type I membrane protein. Endosome. Endosome membrane. Nucleus. Note=In response to EGF, translocated from the cell membrane to the nucleus via Golgi and ER (PubMed:17909029, PubMed:20674546). Endocytosed upon activation by

ligand (PubMed:17182860, PubMed:17909029, PubMed:27153536, PubMed:2790960). Colocalized with GPER1 in the nucleus of estrogen agonist-induced cancer-associated fibroblasts (CAF) (PubMed:20551055)

#### Tissue Location

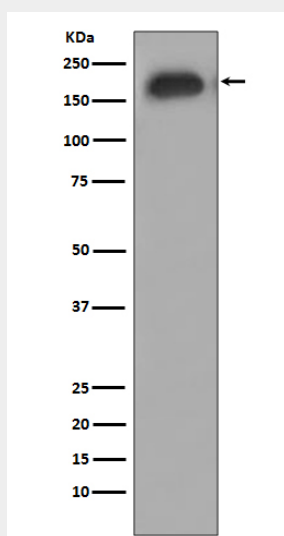
Ubiquitously expressed. Isoform 2 is also expressed in ovarian cancers.

#### Anti-Phospho-EGFR (Y1092) Rabbit Monoclonal Antibody - Protocols

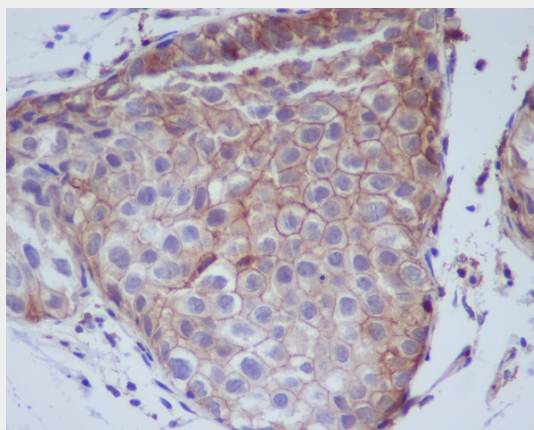
Provided below are standard protocols that you may find useful for product applications.

- [Western Blot](#)
- [Blocking Peptides](#)
- [Dot Blot](#)
- [Immunohistochemistry](#)
- [Immunofluorescence](#)
- [Immunoprecipitation](#)
- [Flow Cytometry](#)
- [Cell Culture](#)

#### Anti-Phospho-EGFR (Y1092) Rabbit Monoclonal Antibody - Images



Western blot analysis of EGFR phosphorylation expression in A431 cell treated with EGF.



Immunohistochemical analysis of paraffin-embedded human breast cancer, using Phospho-EGFR (Y1092) Antibody.