

Anti-Phospho-IRF3 (S386) Rabbit Monoclonal Antibody Catalog # ABO13151

Specification

Anti-Phospho-IRF3 (S386) Rabbit Monoclonal Antibody - Product Information

Application	WB, IF, ICC
Primary Accession	Q14653
Host	Rabbit
Isotype	Rabbit IgG
Reactivity	Human
Clonality	Monoclonal
Format	Liquid

Description

Anti-Phospho-IRF3 (S386) Rabbit Monoclonal Antibody . Tested in WB, ICC/IF applications. This antibody reacts with Human.

Anti-Phospho-IRF3 (S386) Rabbit Monoclonal Antibody - Additional Information

Gene ID 3661

Other Names

Interferon regulatory factor 3, IRF-3, IRF3 {ECO:0000303|PubMed:9803267, ECO:0000312|HGNC:HGNC:6118}

Calculated MW

47219 MW KDa

Application Details

WB 1:1000-1:2000
ICC/IF 1:50-1:200

Subcellular Localization

Cytoplasm. Nucleus. Shuttles between cytoplasmic and nuclear compartments, with export being the prevailing effect. When activated, IRF3 interaction with CREBBP prevents its export to the cytoplasm.

Tissue Specificity

Expressed constitutively in a variety of tissues.

Contents

Rabbit IgG in phosphate buffered saline, pH 7.4, 150mM NaCl, 0.02% sodium azide and 50% glycerol, 0.4-0.5mg/ml BSA.

Immunogen

A synthesized peptide derived from human Phospho-IRF3 (S386)

Purification

Affinity-chromatography

Storage

Store at -20°C for one year. For short term

storage and frequent use, store at 4°C for up to one month. Avoid repeated freeze-thaw cycles.

Anti-Phospho-IRF3 (S386) Rabbit Monoclonal Antibody - Protein Information

Name IRF3 {ECO:0000303|PubMed:9803267, ECO:0000312|HGNC:HGNC:6118}

Function

Key transcriptional regulator of type I interferon (IFN)- dependent immune responses which plays a critical role in the innate immune response against DNA and RNA viruses (PubMed:22394562, PubMed:24049179, PubMed:25636800, PubMed:27302953, PubMed:31340999, PubMed:36603579, PubMed:8524823). Regulates the transcription of type I IFN genes (IFN-alpha and IFN-beta) and IFN-stimulated genes (ISG) by binding to an interferon-stimulated response element (ISRE) in their promoters (PubMed:11846977, PubMed:16846591, PubMed:16979567, PubMed:20049431, PubMed:32972995, PubMed:36603579, PubMed:8524823). Acts as a more potent activator of the IFN-beta (IFNB) gene than the IFN-alpha (IFNA) gene and plays a critical role in both the early and late phases of the IFNA/B gene induction (PubMed:16846591, PubMed:16979567, PubMed:20049431, PubMed:36603579). Found in an inactive form in the cytoplasm of uninfected cells and following viral infection, double-stranded RNA (dsRNA), or toll-like receptor (TLR) signaling, is phosphorylated by IKBKE and TBK1 kinases (PubMed:22394562, PubMed:25636800, PubMed:27302953, PubMed:36603579). This induces a conformational change, leading to its dimerization and nuclear localization and association with CREB binding protein (CREBBP) to form dsRNA-activated factor 1 (DRAF1), a complex which activates the transcription of the type I IFN and ISG genes (PubMed:16154084, PubMed:27302953, PubMed:33440148, PubMed:36603579). Can activate distinct gene expression programs in macrophages and can induce significant apoptosis in primary macrophages (PubMed:16846591). In response to Sendai virus infection, is recruited by TOMM70:HSP90AA1 to mitochondrion and forms an apoptosis complex TOMM70:HSP90AA1:IRF3:BAX inducing apoptosis (PubMed:25609812). Key transcription factor regulating the IFN response during SARS-CoV-2 infection (PubMed:33440148).

Cellular Location

Cytoplasm. Nucleus Mitochondrion. Note=Shuttles between cytoplasmic and nuclear compartments, with export being the prevailing effect (PubMed:10805757, PubMed:35922005). When activated, IRF3 interaction with CREBBP prevents its export to the cytoplasm (PubMed:10805757). Recruited to mitochondria via TOMM70:HSP90AA1 upon Sendai virus infection (PubMed:25609812).

Tissue Location

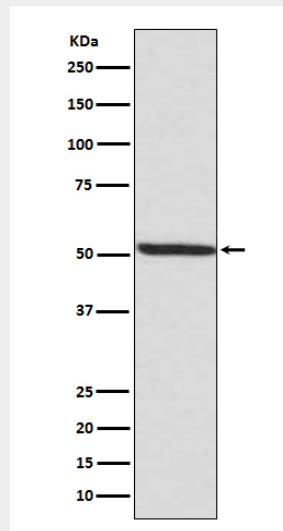
Expressed constitutively in a variety of tissues.

Anti-Phospho-IRF3 (S386) Rabbit Monoclonal Antibody - Protocols

Provided below are standard protocols that you may find useful for product applications.

- [Western Blot](#)
- [Blocking Peptides](#)
- [Dot Blot](#)
- [Immunohistochemistry](#)
- [Immunofluorescence](#)
- [Immunoprecipitation](#)
- [Flow Cytometry](#)
- [Cell Culture](#)

Anti-Phospho-IRF3 (S386) Rabbit Monoclonal Antibody - Images



Western blot analysis of Phospho-IRF3 (S386) expression in MCF7 cell lysate.