

## Anti-Phospho-CDC37 (S13) Rabbit Monoclonal Antibody Catalog # ABO13147

### Specification

---

#### Anti-Phospho-CDC37 (S13) Rabbit Monoclonal Antibody - Product Information

Application	WB, IP
Primary Accession	<a href="#">O16543</a>
Host	Rabbit
Isotype	Rabbit IgG
Reactivity	Rat, Human, Mouse
Clonality	Monoclonal
Format	Liquid

#### Description

Anti-Phospho-CDC37 (S13) Rabbit Monoclonal Antibody . Tested in WB, IP applications. This antibody reacts with Human, Mouse, Rat.

#### Anti-Phospho-CDC37 (S13) Rabbit Monoclonal Antibody - Additional Information

**Gene ID** 11140

#### Other Names

Hsp90 co-chaperone Cdc37, Hsp90 chaperone protein kinase-targeting subunit, p50Cdc37, Hsp90 co-chaperone Cdc37, N-terminally processed, CDC37, CDC37A

#### Calculated MW

44468 MW KDa

#### Application Details

WB 1:500-1:2000<br>IP 1:50

#### Subcellular Localization

Cytoplasm.

#### Contents

Rabbit IgG in phosphate buffered saline, pH 7.4, 150mM NaCl, 0.02% sodium azide and 50% glycerol, 0.4-0.5mg/ml BSA.

#### Immunogen

A synthesized peptide derived from human Phospho-CDC37 (S13)

#### Purification

Affinity-chromatography

Storage

**Store at -20°C for one year. For short term storage and frequent use, store at 4°C for up to one month. Avoid repeated freeze-thaw cycles.**

#### Anti-Phospho-CDC37 (S13) Rabbit Monoclonal Antibody - Protein Information

**Name** CDC37

**Synonyms** CDC37A

**Function**

Co-chaperone that binds to numerous kinases and promotes their interaction with the Hsp90 complex, resulting in stabilization and promotion of their activity (PubMed:<a href="http://www.uniprot.org/citations/8666233" target="\_blank">8666233</a>). Inhibits HSP90AA1 ATPase activity (PubMed:<a href="http://www.uniprot.org/citations/23569206" target="\_blank">23569206</a>).

**Cellular Location**

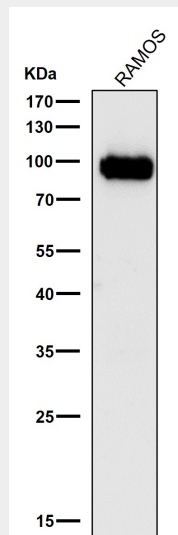
Cytoplasm.

**Anti-Phospho-CDC37 (S13) Rabbit Monoclonal Antibody - Protocols**

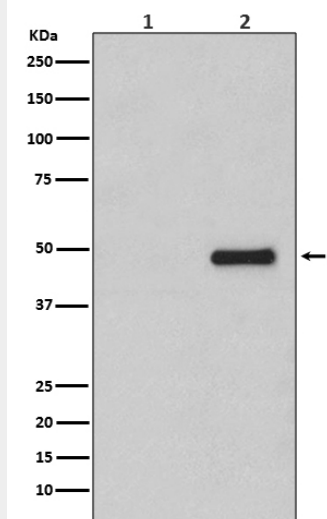
Provided below are standard protocols that you may find useful for product applications.

- [Western Blot](#)
- [Blocking Peptides](#)
- [Dot Blot](#)
- [Immunohistochemistry](#)
- [Immunofluorescence](#)
- [Immunoprecipitation](#)
- [Flow Cytometry](#)
- [Cell Culture](#)

**Anti-Phospho-CDC37 (S13) Rabbit Monoclonal Antibody - Images**



All lanes use the Antibody at 1:3K dilution for 1 hour at room temperature.



Western blot analysis of Phospho-CDC37 (S13) expression in (1) Jurkat cell lysate treated with Alkaline Phosphatase; (2) Jurkat cell lysate.