

Anti-Phospho-c-Myc (T58) Rabbit Monoclonal Antibody
Catalog # ABO13131**Specification****Anti-Phospho-c-Myc (T58) Rabbit Monoclonal Antibody - Product Information**

Application	WB, IF, ICC, FC
Primary Accession	P01106
Host	Rabbit
Isotype	Rabbit IgG
Reactivity	Human
Clonality	Monoclonal
Format	Liquid

Description

Anti-Phospho-c-Myc (T58) Rabbit Monoclonal Antibody . Tested in WB, ICC/IF, Flow Cytometry applications. This antibody reacts with Human.

Anti-Phospho-c-Myc (T58) Rabbit Monoclonal Antibody - Additional Information

Gene ID 4609

Other Names

Myc proto-oncogene protein, Class E basic helix-loop-helix protein 39, bHLHe39, Proto-oncogene c-Myc, Transcription factor p64, MYC, BHLHE39

Calculated MW

48804 MW KDa

Application Details

WB 1:500-1:2000
ICC/IF 1:50-1:200
FC 1:50

Subcellular Localization

Nucleus, nucleoplasm. Nucleus, nucleolus.

Contents

Rabbit IgG in phosphate buffered saline, pH 7.4, 150mM NaCl, 0.02% sodium azide and 50% glycerol, 0.4-0.5mg/ml BSA.

Immunogen

A synthesized peptide derived from human Phospho-c-Myc (T58)

Purification

Affinity-chromatography

Storage

Store at -20°C for one year. For short term storage and frequent use, store at 4°C for up to one month. Avoid repeated freeze-thaw cycles.

Anti-Phospho-c-Myc (T58) Rabbit Monoclonal Antibody - Protein Information

Name MYC**Synonyms** BHLHE39**Function**

Transcription factor that binds DNA in a non-specific manner, yet also specifically recognizes the core sequence 5'-CAC[GA]TG-3' (PubMed:24940000, PubMed:25956029). Activates the transcription of growth-related genes (PubMed:24940000, PubMed:25956029). Binds to the VEGFA promoter, promoting VEGFA production and subsequent sprouting angiogenesis (PubMed:24940000, PubMed:25956029). Regulator of somatic reprogramming, controls self-renewal of embryonic stem cells (By similarity). Functions with TAF6L to activate target gene expression through RNA polymerase II pause release (By similarity). Positively regulates transcription of HNRNPA1, HNRNPA2 and PTBP1 which in turn regulate splicing of pyruvate kinase PKM by binding repressively to sequences flanking PKM exon 9, inhibiting exon 9 inclusion and resulting in exon 10 inclusion and production of the PKM M2 isoform (PubMed:20010808).

Cellular Location

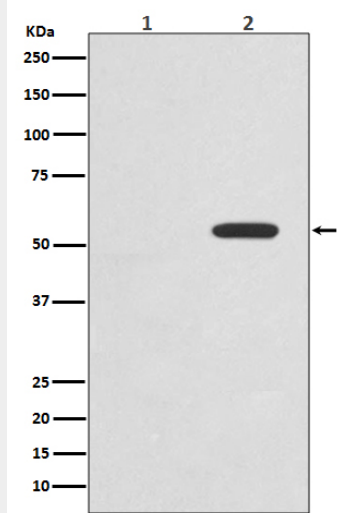
Nucleus, nucleoplasm. Nucleus, nucleolus. Nucleus. Cytoplasm Note=Localization to the nucleolus is dependent on HEATR1

Anti-Phospho-c-Myc (T58) Rabbit Monoclonal Antibody - Protocols

Provided below are standard protocols that you may find useful for product applications.

- [Western Blot](#)
- [Blocking Peptides](#)
- [Dot Blot](#)
- [Immunohistochemistry](#)
- [Immunofluorescence](#)
- [Immunoprecipitation](#)
- [Flow Cytometry](#)
- [Cell Culture](#)

Anti-Phospho-c-Myc (T58) Rabbit Monoclonal Antibody - Images



Western blot analysis of Phospho-c-Myc (T58) expression in (1) HeLa cell lysate; (2) HeLa cell lysate treated with Calyculin A and Okadaic Acid.