

Anti-Hsp20 Picoband Antibody
Catalog # ABO13060

Specification

Anti-Hsp20 Picoband Antibody - Product Information

Application	WB
Primary Accession	O14558
Host	Rabbit
Reactivity	Human, Mouse, Rat
Clonality	Polyclonal
Format	Lyophilized

Description

Rabbit IgG polyclonal antibody for Heat shock protein beta-6 (HSPB6) detection. Tested with WB in Human;Mouse;Rat.

Reconstitution

Add 0.2ml of distilled water will yield a concentration of 500ug/ml.

Anti-Hsp20 Picoband Antibody - Additional Information

Gene ID 126393

Other Names

Heat shock protein beta-6, HspB6, Heat shock 20 kDa-like protein p20, HSPB6

Calculated MW

17136 MW KDa

Application Details

Western blot, 0.1-0.5 µg/ml, Human, Mouse, Rat

Subcellular Localization

Cytoplasm . Nucleus . Translocates to nuclear foci during heat shock.

Contents

Each vial contains 5mg BSA, 0.9mg NaCl, 0.2mg Na₂HPO₄, 0.05mg Na₃N.

Immunogen

E. coli-derived human Hsp20 recombinant protein (Position: H73-L123). Human Hsp20 shares 88.2% and 92.2% amino acid (aa) sequence identity with mouse and rat Hsp20, respectively.

Purification

Immunogen affinity purified.

Cross Reactivity

No cross reactivity with other proteins.

Storage

At -20°C for one year. After r°Constitution, at 4°C for one month. It°Can also be

aliquotted and stored frozen at -20°C for a longer time. Avoid repeated freezing and thawing.

Anti-Hsp20 Picoband Antibody - Protein Information

Name HSPB6

Function

Small heat shock protein which functions as a molecular chaperone probably maintaining denatured proteins in a folding- competent state. Seems to have versatile functions in various biological processes. Plays a role in regulating muscle function such as smooth muscle vasorelaxation and cardiac myocyte contractility. May regulate myocardial angiogenesis implicating KDR. Overexpression mediates cardioprotection and angiogenesis after induced damage. Stabilizes monomeric YWHAZ thereby supporting YWHAZ chaperone-like activity.

Cellular Location

Cytoplasm. Nucleus. Secreted Note=Translocates to nuclear foci during heat shock

Anti-Hsp20 Picoband Antibody - Protocols

Provided below are standard protocols that you may find useful for product applications.

- [Western Blot](#)
- [Blocking Peptides](#)
- [Dot Blot](#)
- [Immunohistochemistry](#)
- [Immunofluorescence](#)
- [Immunoprecipitation](#)
- [Flow Cytometry](#)
- [Cell Culture](#)

Anti-Hsp20 Picoband Antibody - Images

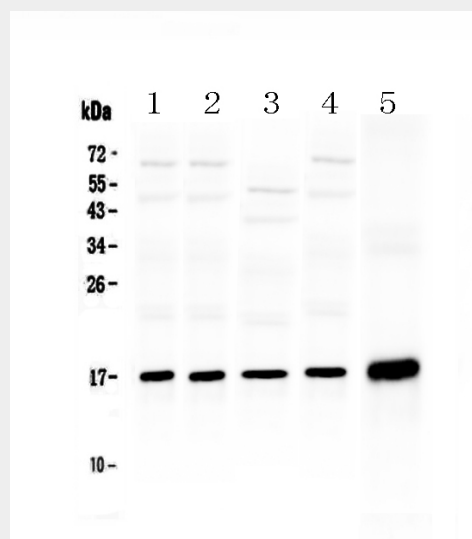


Figure 1. Western blot analysis of Hsp20 using anti-Hsp20 antibody (ABO13060).

Anti-Hsp20 Picoband Antibody - Background

Heat shock protein beta-6 is a protein that in humans is encoded by the HSPB6 gene. HSPB6, also known as hsp20, is a 17-kDa member of the small heat shock family of proteins. It is expressed in multiple tissues; however, HSPB6 is most highly and constitutively expressed in different types of muscle including vascular, airway, colonic, bladder, uterine smooth muscle, cardiac muscle and skeletal muscle. HSPB6 has specific functions for vasodilation, platelet function, and insulin resistance and in smooth and cardiac muscle.