

Anti-MATH1/HATH1 Picoband Antibody
Catalog # ABO12980**Specification****Anti-MATH1/HATH1 Picoband Antibody - Product Information**

Application	WB
Primary Accession	Q92858
Host	Rabbit
Reactivity	Human, Mouse, Rat
Clonality	Polyclonal
Format	Lyophilized

Description

Rabbit IgG polyclonal antibody for Protein atonal homolog 1(ATOH1) detection. Tested with WB in Human;Mouse;Rat.

Reconstitution

Add 0.2ml of distilled water will yield a concentration of 500ug/ml.

Anti-MATH1/HATH1 Picoband Antibody - Additional Information

Gene ID 474

Other Names

Protein atonal homolog 1, Class A basic helix-loop-helix protein 14, bHLHa14, Helix-loop-helix protein hATH-1, hATH1, ATOH1, ATH1, BHLHA14

Calculated MW

38160 MW KDa

Application Details

Western blot, 0.1-0.5 µg/ml, Mouse, Rat, Human

Subcellular Localization

Nucleus .

Contents

Each vial contains 5mg BSA, 0.9mg NaCl, 0.2mg Na₂HPO₄, 0.05mg Na₃.

Immunogen

A synthetic peptide corresponding to a sequence at the N-terminus of human MATH1/HATH1 (1-30aa MSRLHAEWEAEVKELGDHHRQPQHLPQ), different from the related mouse sequence by three amino acids.

Purification

Immunogen affinity purified.

Cross Reactivity

No cross reactivity with other proteins.

Storage

At -20°C for one year. After r°Constitution, at 4°C for one month. It°Can also be aliquotted and stored frozen at -20°C for a longer time. Avoid repeated freezing and thawing.

Anti-MATH1/HATH1 Picoband Antibody - Protein Information

Name ATOH1 ([HGNC:797](#))

Synonyms ATH1, BHLHA14

Function

Transcriptional regulator. Activates E box-dependent transcription in collaboration with TCF3/E47, but the activity is completely antagonized by the negative regulator of neurogenesis HES1. Plays a role in the differentiation of subsets of neural cells by activating E box-dependent transcription (By similarity).

Cellular Location

Nucleus.

Anti-MATH1/HATH1 Picoband Antibody - Protocols

Provided below are standard protocols that you may find useful for product applications.

- [Western Blot](#)
- [Blocking Peptides](#)
- [Dot Blot](#)
- [Immunohistochemistry](#)
- [Immunofluorescence](#)
- [Immunoprecipitation](#)
- [Flow Cytometry](#)
- [Cell Culture](#)

Anti-MATH1/HATH1 Picoband Antibody - Images

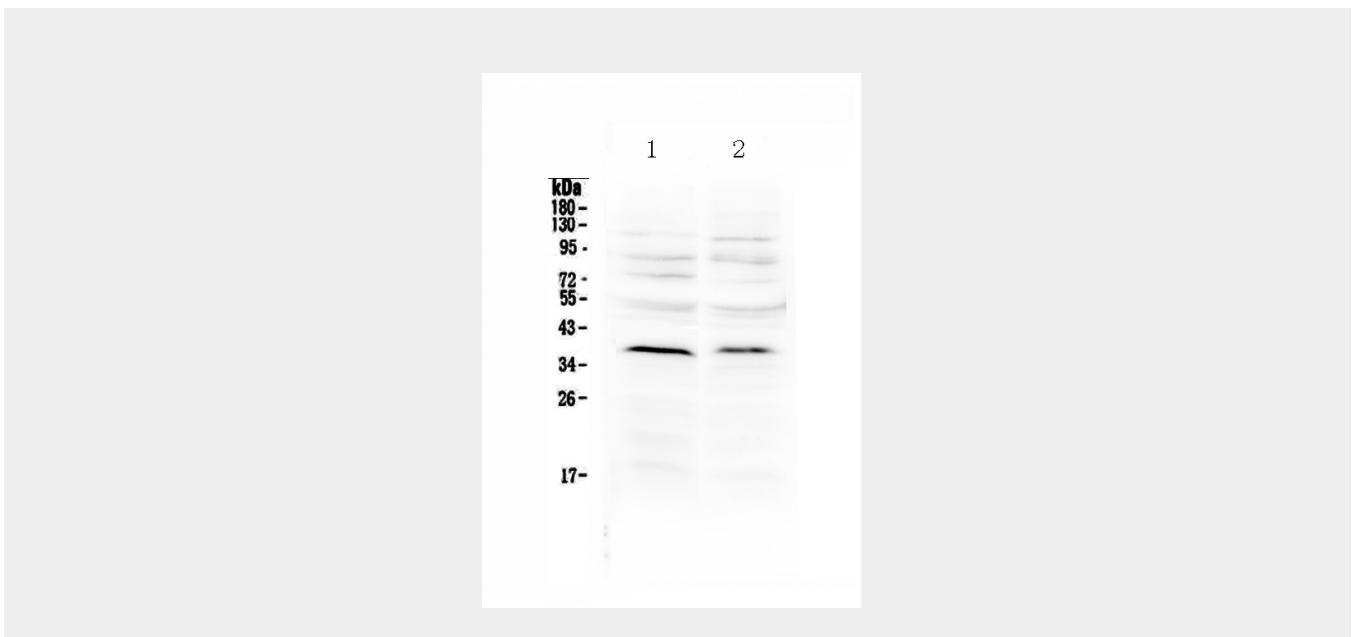


Figure 1. Western blot analysis of MATH1/HATH1 using anti-MATH1/HATH1 antibody (ABO12980).

Anti-MATH1/HATH1 Picoband Antibody - Background

Protein atonal homolog 1 is a protein that in humans is encoded by the ATOH1 gene. This protein belongs to the basic helix-loop-helix (BHLH) family of transcription factors. It activates E-box dependent transcription along with E47. ATOH1 is required for the formation of both neural and non-neural cell types. Using genetic deletion in mice, Atoh1 has been shown to be essential for formation of cerebellar granule neurons, inner ear hair cells, spinal cord interneurons, Merkel cells of the skin, and intestinal secretory cells (goblet, enteroendocrine, and Paneth cells).