

Anti-CD1c Picoband Antibody
Catalog # ABO12932**Specification**

Anti-CD1c Picoband Antibody - Product Information

Application	WB
Primary Accession	P29017
Host	Rabbit
Reactivity	Human
Clonality	Polyclonal
Format	Lyophilized

Description

Rabbit IgG polyclonal antibody for CD1c detection. Tested with WB, Direct ELISA in Human.

Reconstitution

Add 0.2ml of distilled water will yield a concentration of 500ug/ml.

Anti-CD1c Picoband Antibody - Additional Information

Gene ID 911

Other Names

T-cell surface glycoprotein CD1c, CD1c, CD1C

Application Details

Western blot, 0.1-0.5 µg/ml

Subcellular Localization

Cell membrane.

Tissue Specificity

Expressed on cortical thymocytes, on certain T-cell leukemias, and in various other tissues.

Contents

Each vial contains 4mg Trehalose, 0.9mg NaCl, 0.2mg Na₂HPO₄, 0.05mg NaN₃.

Immunogen

E. coli-derived human CD1c recombinant protein (Position: K73-L287).

Cross Reactivity

No cross reactivity with other proteins.

Storage

At -20°C; for one year. After r°Constitution, at 4°C; for one month. It°Can also be aliquotted and stored frozen at -20°C; for a longer time. Avoid repeated freezing and thawing.

Anti-CD1c Picoband Antibody - Protein Information

Name CD1C

Function

Antigen-presenting protein that binds self and non-self lipid and glycolipid antigens and presents them to T-cell receptors on natural killer T-cells.

Cellular Location

Cell membrane; Single-pass type I membrane protein. Endosome membrane; Single-pass type I membrane protein Lysosome. Note=Subject to intracellular trafficking between the cell membrane and endosomes

Tissue Location

Expressed on cortical thymocytes, on certain T-cell leukemias, and in various other tissues

Anti-CD1c Picoband Antibody - Protocols

Provided below are standard protocols that you may find useful for product applications.

- [Western Blot](#)
- [Blocking Peptides](#)
- [Dot Blot](#)
- [Immunohistochemistry](#)
- [Immunofluorescence](#)
- [Immunoprecipitation](#)
- [Flow Cytometry](#)
- [Cell Culture](#)

Anti-CD1c Picoband Antibody - Images

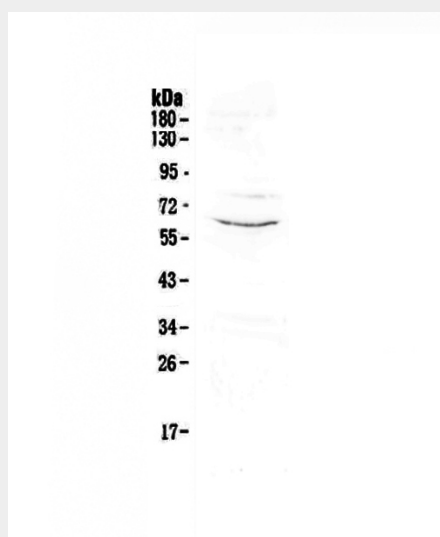


Figure 1. Western blot analysis of CD1c using anti-CD1c antibody (ABO12932).

Anti-CD1c Picoband Antibody - Background

CD1C is a group-1 member of the CD1 family of major histocompatibility (MHC)-like glycoproteins. The CD1 proteins mediate the presentation of primarily lipid and glycolipid antigens of self or

microbial origin to T cells. The human genome contains five CD1 family genes organized in a cluster on chromosome 1. The CD1 family members are thought to differ in their cellular localization and specificity for particular lipid ligands. The protein encoded by this gene is broadly distributed throughout the endocytic system via a tyrosine-based motif in the cytoplasmic tail. Alternatively spliced transcript variants of this gene have been observed, but their full-length nature is not known.