

## Anti-IL12B Picoband Antibody Catalog # ABO12927

### Specification

---

#### Anti-IL12B Picoband Antibody - Product Information

Application	WB
Primary Accession	<a href="#">IL12b: P43432</a>
Host	Rabbit
Reactivity	Rat
Clonality	Polyclonal
Format	Lyophilized

#### Description

Rabbit IgG polyclonal antibody for IL12B detection. Tested with WB, Direct ELISA in Mouse;Rat.

#### Reconstitution

Add 0.2ml of distilled water will yield a concentration of 500ug/ml.

#### Anti-IL12B Picoband Antibody - Additional Information

##### Application Details

Western blot, 0.1-0.5 µg/ml<br><br> Direct ELISA, 0.1-0.5 µg/ml<br>

##### Subcellular Localization

Secreted.

##### Contents

Each vial contains 5mg BSA, 0.9mg NaCl, 0.2mg Na<sub>2</sub>HPO<sub>4</sub>, 0.05mg Na<sub>3</sub>N.

##### Immunogen

E. coli-derived mouse IL12B recombinant protein (Position: M23-E250).

##### Purification

Immunogen affinity purified.

##### Cross Reactivity

No cross reactivity with other proteins.

##### Storage

At -20°C for one year. After r° Constitution, at 4°C for one month. It° Can also be aliquotted and stored frozen at -20°C for a longer time. Avoid repeated freezing and thawing.

#### Anti-IL12B Picoband Antibody - Protein Information

#### Anti-IL12B Picoband Antibody - Protocols

Provided below are standard protocols that you may find useful for product applications.

- [Western Blot](#)
- [Blocking Peptides](#)
- [Dot Blot](#)
- [Immunohistochemistry](#)
- [Immunofluorescence](#)
- [Immunoprecipitation](#)
- [Flow Cytometry](#)
- [Cell Culture](#)

#### Anti-IL12B Picoband Antibody - Images

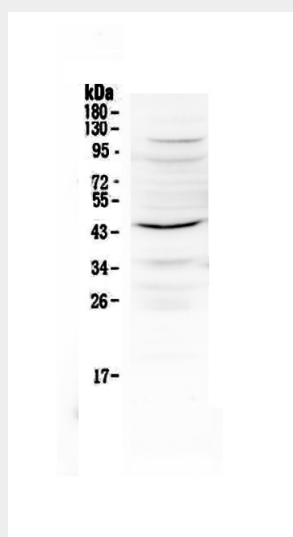


Figure 1. Western blot analysis of IL12B using anti-IL12B antibody (ABO12927). Electrophoresis was performed on a 5-20% SDS-PAGE gel at 70V (Stacking gel) / 90V (Resolving gel) for 2-3 hours. The sample well of each lane was loaded with 50ug of sample under reducing conditions. Lane 1: mouse kidney tissue lysates. After Electrophoresis, proteins were transferred to a Nitrocellulose membrane at 150mA for 50-90 minutes. Blocked the membrane with 5% Non-fat Milk/ TBS for 1.5 hour at RT. The membrane was incubated with rabbit anti-IL12B antigen affinity purified polyclonal antibody (Catalog # ABO12927) at 0.5 ug/mL overnight at 4°C, then washed with TBS-0.1%Tween 3 times with 5 minutes each and probed with a goat anti-rabbit IgG-HRP secondary antibody at a dilution of 1:10000 for 1.5 hour at RT. The signal is developed using an Enhanced Chemiluminescent detection (ECL) kit with Tanon 5200 system. A specific band was detected for IL12B at approximately 37-45KD. The expected band size for IL12B is at 37KD.

#### Anti-IL12B Picoband Antibody - Background

Subunit beta of interleukin 12 (IL12B), also known as interleukin 12B, or interleukin-12 subunit p40, is a subunit of human interleukin 12. It is mapped to 5q33.3. This cytokine is expressed by activated macrophages that serve as an essential inducer of Th1 cells development. This cytokine has been found to be important for sustaining a sufficient number of memory/effector Th1 cells to mediate long-term protection to an intracellular pathogen. Overexpression of this gene was observed in the central nervous system of patients with multiple sclerosis (MS), suggesting a role of this cytokine in the pathogenesis of the disease.