

Anti-IL22 Picoband Antibody
Catalog # ABO12906

Specification

Anti-IL22 Picoband Antibody - Product Information

Application	WB
Primary Accession	IL22: Q9GZX6
Host	Rabbit
Reactivity	Human, Mouse, Rat
Clonality	Polyclonal
Format	Lyophilized

Description

Rabbit IgG polyclonal antibody for IL22 detection. Tested with WB in Human;Mouse;Rat.

Reconstitution

Add 0.2ml of distilled water will yield a concentration of 500ug/ml.

Anti-IL22 Picoband Antibody - Additional Information

Application Details

Western blot, 0.1-0.5 µg/ml

Subcellular Localization

Secreted.

Contents

Each vial contains 5mg BSA, 0.9mg NaCl, 0.2mg Na₂HPO₄, 0.05mg Na₃.

Immunogen

A synthetic peptide corresponding to a sequence of human IL22 (DDLHIQRNVQKLKDTVKKLGESGEIKAIGELDLLFMSLRNA).

Purification

Immunogen affinity purified.

Cross Reactivity

No cross reactivity with other proteins.

Storage

At -20°C for one year. After r° Constitution, at 4°C for one month. It° Can also be aliquotted and stored frozen at -20°C for a longer time. Avoid repeated freezing and thawing.

Anti-IL22 Picoband Antibody - Protein Information

Anti-IL22 Picoband Antibody - Protocols

Provided below are standard protocols that you may find useful for product applications.

- [Western Blot](#)
- [Blocking Peptides](#)
- [Dot Blot](#)
- [Immunohistochemistry](#)
- [Immunofluorescence](#)
- [Immunoprecipitation](#)
- [Flow Cytometry](#)
- [Cell Culture](#)

Anti-IL22 Picoband Antibody - Images

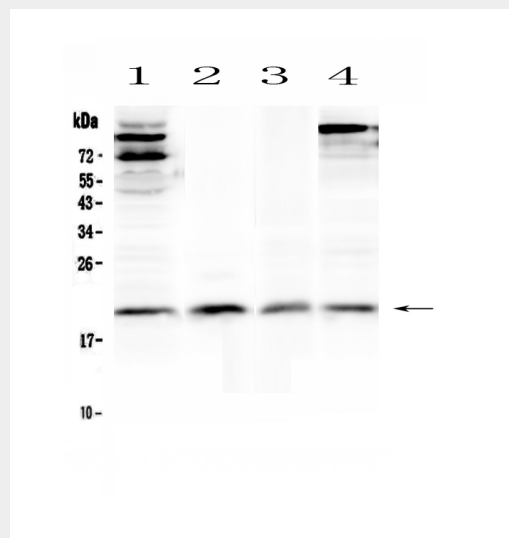


Figure 1. Western blot analysis of IL22 using anti-IL22 antibody (ABO12906). Electrophoresis was performed on a 5-20% SDS-PAGE gel at 70V (Stacking gel) / 90V (Resolving gel) for 2-3 hours. The sample well of each lane was loaded with 50ug of sample under reducing conditions. Lane 1: human Hela whole cell lysates, Lane 2: human placenta tissue lysates, Lane 3: rat thymus tissue lysates, Lane 4: mouse thymus tissue lysates. After Electrophoresis, proteins were transferred to a Nitrocellulose membrane at 150mA for 50-90 minutes. Blocked the membrane with 5% Non-fat Milk/ TBS for 1.5 hour at RT. The membrane was incubated with rabbit anti-IL22 antigen affinity purified polyclonal antibody (Catalog # ABO12906) at 0.5 ug/mL overnight at 4°C, then washed with TBS-0.1%Tween 3 times with 5 minutes each and probed with a goat anti-rabbit IgG-HRP secondary antibody at a dilution of 1:10000 for 1.5 hour at RT. The signal is developed using an Enhanced Chemiluminescent detection (ECL) kit with Tanon 5200 system. A specific band was detected for IL22 at approximately 20KD. The expected band size for IL22 is at 20KD.

Anti-IL22 Picoband Antibody - Background

Interleukin-22 (IL-22), also known as ILTIF, is protein that in humans is encoded by the IL22 gene. IL-22 a member of a group of cytokines called the IL-10 family or IL-10 superfamily, a class of potent mediators of cellular inflammatory responses. Using FISH, the IL22 gene is mapped to chromosome 12q15, close to the IFNG and the herpesvirus saimiri-induced AK155 genes. IL-22 can contribute to immune disease through the stimulation of inflammatory responses, S100s and defensins. It also promotes hepatocyte survival in the liver and epithelial cells in the lung and gut similar to IL-10. In some contexts, the pro-inflammatory versus tissue-protective functions of IL-22 are regulated by the often co-expressed cytokine IL-17A.