

Anti-Leptin Picoband Antibody
Catalog # ABO12850**Specification****Anti-Leptin Picoband Antibody - Product Information**

Application	WB
Primary Accession	P41159
Host	Rabbit
Reactivity	Human, Mouse, Rat
Clonality	Polyclonal
Format	Lyophilized

Description

Rabbit IgG polyclonal antibody for Leptin detection. Tested with WB, ELISA(Cap) in Human;Mouse;Rat.

Reconstitution

Add 0.2ml of distilled water will yield a concentration of 500ug/ml.

Anti-Leptin Picoband Antibody - Additional Information

Gene ID 3952

Other Names

Leptin {ECO:0000312|HGNC:HGNC:6553}, Obese protein, Obesity factor, LEP (http://www.genenames.org/cgi-bin/gene_symbol_report?hgnc_id=6553)

Application Details

Western blot, 0.1-0.5 µg/ml
 ELISA(Cap), 0.1-0.5 µg/ml

Subcellular Localization

Secreted.

Tissue Specificity

Adipose tissue is the main source of leptin it is also produced by other peripheral tissues such as the skeletal muscle (PubMed:7789654, PubMed:16052473, PubMed:12448771). Expressed by intercalated and striated tracts of submandibular and parotid salivary gland intralobular ducts (PubMed:12448771). Detected by fundic epithelium of the gastric mucosa (PubMed:10896907). Secreted into blood and gastric juice (PubMed:10896907).

Contents

Each vial contains 4mg Trehalose, 0.9mg NaCl, 0.2mg Na₂HPO₄, 0.05mg NaN₃.

Immunogen

E. coli-derived human Leptin recombinant protein (Position: V22-C167).

Cross Reactivity

No cross reactivity with other proteins.

Storage

At -20°C; for one year. After reconstitution, at 4°C; for one month. It can also be aliquotted and stored frozen at -20°C; for a longer time. Avoid repeated freezing and thawing.

Anti-Leptin Picoband Antibody - Protein Information

Name LEP ([HGNC:6553](#))

Function

Key player in the regulation of energy balance and body weight control. Once released into the circulation, has central and peripheral effects by binding LEPR, found in many tissues, which results in the activation of several major signaling pathways (PubMed: [15899045](http://www.uniprot.org/citations/15899045), PubMed: [17344214](http://www.uniprot.org/citations/17344214), PubMed: [19688109](http://www.uniprot.org/citations/19688109)). In the hypothalamus, acts as an appetite-regulating factor that induces a decrease in food intake and an increase in energy consumption by inducing anorexigenic factors and suppressing orexigenic neuropeptides, also regulates bone mass and secretion of hypothalamo-pituitary-adrenal hormones. In the periphery, increases basal metabolism, influences reproductive function, regulates pancreatic beta-cell function and insulin secretion, is pro-angiogenic for endothelial cell and affects innate and adaptive immunity (By similarity) (PubMed: [11460888](http://www.uniprot.org/citations/11460888), PubMed: [19688109](http://www.uniprot.org/citations/19688109), PubMed: [24340098](http://www.uniprot.org/citations/24340098), PubMed: [25060689](http://www.uniprot.org/citations/25060689), PubMed: [8589726](http://www.uniprot.org/citations/8589726)). In the arcuate nucleus of the hypothalamus, activates by depolarization POMC neurons inducing FOS and SOCS3 expression to release anorexigenic peptides and inhibits by hyperpolarization NPY neurons inducing SOCS3 with a consequent reduction on release of orexigenic peptides (By similarity). In addition to its known satiety inducing effect, has a modulatory role in nutrient absorption. In the intestine, reduces glucose absorption by enterocytes by activating PKC and leading to a sequential activation of p38, PI3K and ERK signaling pathways which exerts an inhibitory effect on glucose absorption (PubMed: [24340098](http://www.uniprot.org/citations/24340098)). Acts as a growth factor on certain tissues, through the activation of different signaling pathways increases expression of genes involved in cell cycle regulation such as CCND1, via JAK2-STAT3 pathway, or VEGFA, via MAPK1/3 and PI3K-AKT1 pathways (By similarity) (PubMed: [17344214](http://www.uniprot.org/citations/17344214)). May also play an apoptotic role via JAK2-STAT3 pathway and up-regulation of BIRC5 expression (PubMed: [18242580](http://www.uniprot.org/citations/18242580)). Pro-angiogenic, has mitogenic activity on vascular endothelial cells and plays a role in matrix remodeling by regulating the expression of matrix metalloproteinases (MMPs) and tissue inhibitors of metalloproteinases (TIMPs) (PubMed: [11460888](http://www.uniprot.org/citations/11460888)). In innate immunity, modulates the activity and function of neutrophils by increasing chemotaxis and the secretion of oxygen radicals. Increases phagocytosis by macrophages and enhances secretion of pro-inflammatory mediators. Increases cytotoxic ability of NK cells (PubMed: [12504075](http://www.uniprot.org/citations/12504075)). Plays a pro-inflammatory role, in synergy with IL1B, by inducing NOS2 which promotes the production of IL6, IL8 and Prostaglandin E2, through a signaling pathway that involves JAK2, PI3K, MAP2K1/MEK1 and MAPK14/p38 (PubMed: [15899045](http://www.uniprot.org/citations/15899045), PubMed: [19688109](http://www.uniprot.org/citations/19688109)). In adaptive immunity, promotes the switch of memory T-cells towards T helper-1 cell immune responses (By similarity). Increases CD4(+)CD25(-) T-cell proliferation and reduces autophagy during TCR (T-cell receptor) stimulation, through MTOR

signaling pathway activation and BCL2 up-regulation (PubMed:25060689).

Cellular Location

Secreted.

Tissue Location

Adipose tissue is the main source of leptin. It is also produced by other peripheral tissues such as the skeletal muscle (PubMed:12448771, PubMed:16052473, PubMed:7789654). Expressed by intercalated and striated tracts of submandibular and parotid salivary gland intralobular ducts (PubMed:12448771). Detected by fundic epithelium of the gastric mucosa (PubMed:10896907). Secreted into blood and gastric juice (PubMed:10896907).

Anti-Leptin Picoband Antibody - Protocols

Provided below are standard protocols that you may find useful for product applications.

- [Western Blot](#)
- [Blocking Peptides](#)
- [Dot Blot](#)
- [Immunohistochemistry](#)
- [Immunofluorescence](#)
- [Immunoprecipitation](#)
- [Flow Cytometry](#)
- [Cell Culture](#)

Anti-Leptin Picoband Antibody - Images

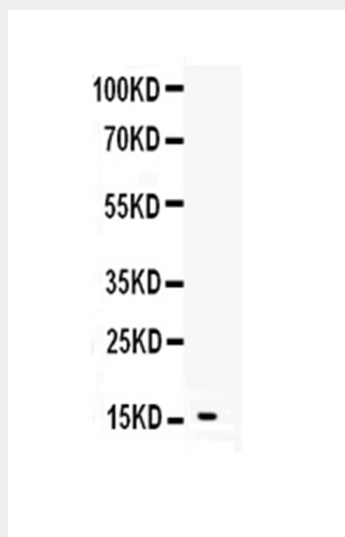


Figure 1. Western blot analysis of Leptin using anti-Leptin antibody (ABO12850).

Anti-Leptin Picoband Antibody - Background

Leptin have been found to be obese and diabetic and to have reduced activity, metabolism and body temperature. cDNA clones encoding Leptin have been isolated from human, simian, mouse, and rat cells. The expression of Leptin mRNA has been shown to be restricted to adipose tissue. Although regulation of fat stores is deemed to be the primary function of leptin, it also plays a role in other physiological processes, as evidenced by its multiple sites of synthesis other than fat cells,

and the multiple cell types beside hypothalamic cells that have leptin receptors. Many of these additional functions are yet to be defined.