

Anti-EGFR Picoband Antibody
Catalog # ABO12792

Specification

Anti-EGFR Picoband Antibody - Product Information

Application	WB
Primary Accession	P00533
Host	Rabbit
Reactivity	Human, Mouse, Rat
Clonality	Polyclonal
Format	Lyophilized

Description

Rabbit IgG polyclonal antibody for Epidermal growth factor receptor(EGFR) detection. Tested with WB in Human;Mouse;Rat.

Reconstitution

Add 0.2ml of distilled water will yield a concentration of 500ug/ml.

Anti-EGFR Picoband Antibody - Additional Information

Gene ID 1956

Other Names

Epidermal growth factor receptor, 2.7.10.1, Proto-oncogene c-ErbB-1, Receptor tyrosine-protein kinase erbB-1, EGFR, ERBB, ERBB1, HER1

Calculated MW

134277 MW KDa

Application Details

Western blot, 0.1-0.5 µg/ml, Human, Mouse, Rat

Subcellular Localization

Cell membrane; Single-pass type I membrane protein. Endoplasmic reticulum membrane; Single-pass type I membrane protein. Golgi apparatus membrane; Single-pass type I membrane protein. Nucleus membrane; Single-pass type I membrane protein. Endosome. Endosome membrane. Nucleus. In response to EGF, translocated from the cell membrane to the nucleus via Golgi and ER. Endocytosed upon activation by ligand. Colocalized with GPER1 in the nucleus of estrogen agonist-induced cancer-associated fibroblasts (CAF).

Tissue Specificity

Ubiquitously expressed. Isoform 2 is also expressed in ovarian cancers. .

Contents

Each vial contains 5mg BSA, 0.9mg NaCl, 0.2mg Na₂HPO₄, 0.05mg Na₃.

Immunogen

A synthetic peptide corresponding to a sequence at the N-terminus of human EGFR (25-57aa LEEKKVCQGTSNKLTQLGTFEDHFLSLQRMFNN), different from the related mouse sequence by two

amino acids.

Purification

Immunogen affinity purified.

Cross Reactivity

No cross reactivity with other proteins.

Storage

At -20°C for one year. After r°Constitution, at 4°C for one month. It°Can also be aliquotted and stored frozen at -20°C for a longer time. Avoid repeated freezing and thawing.

Anti-EGFR Picoband Antibody - Protein Information

Name EGFR ([HGNC:3236](#))

Synonyms ERBB, ERBB1, HER1

Function

Receptor tyrosine kinase binding ligands of the EGF family and activating several signaling cascades to convert extracellular cues into appropriate cellular responses (PubMed:[10805725](http://www.uniprot.org/citations/10805725), PubMed:[27153536](http://www.uniprot.org/citations/27153536), PubMed:[2790960](http://www.uniprot.org/citations/2790960), PubMed:[35538033](http://www.uniprot.org/citations/35538033)). Known ligands include EGF, TGFA/TGF- alpha, AREG, epigen/EPGN, BTC/betacellulin, epiregulin/EREG and HBEGF/heparin-binding EGF (PubMed:[12297049](http://www.uniprot.org/citations/12297049), PubMed:[15611079](http://www.uniprot.org/citations/15611079), PubMed:[17909029](http://www.uniprot.org/citations/17909029), PubMed:[20837704](http://www.uniprot.org/citations/20837704), PubMed:[27153536](http://www.uniprot.org/citations/27153536), PubMed:[2790960](http://www.uniprot.org/citations/2790960), PubMed:[7679104](http://www.uniprot.org/citations/7679104), PubMed:[8144591](http://www.uniprot.org/citations/8144591), PubMed:[9419975](http://www.uniprot.org/citations/9419975)). Ligand binding triggers receptor homo- and/or heterodimerization and autophosphorylation on key cytoplasmic residues. The phosphorylated receptor recruits adapter proteins like GRB2 which in turn activates complex downstream signaling cascades. Activates at least 4 major downstream signaling cascades including the RAS-RAF-MEK-ERK, PI3 kinase-AKT, PLCgamma-PKC and STATs modules (PubMed:[27153536](http://www.uniprot.org/citations/27153536)). May also activate the NF-kappa-B signaling cascade (PubMed:[11116146](http://www.uniprot.org/citations/11116146)). Also directly phosphorylates other proteins like RGS16, activating its GTPase activity and probably coupling the EGF receptor signaling to the G protein-coupled receptor signaling (PubMed:[11602604](http://www.uniprot.org/citations/11602604)). Also phosphorylates MUC1 and increases its interaction with SRC and CTNNB1/beta-catenin (PubMed:[11483589](http://www.uniprot.org/citations/11483589)). Positively regulates cell migration via interaction with CCDC88A/GIV which retains EGFR at the cell membrane following ligand stimulation, promoting EGFR signaling which triggers cell migration (PubMed:[20462955](http://www.uniprot.org/citations/20462955)). Plays a role in enhancing learning and memory performance (By similarity). Plays a role in mammalian pain signaling (long-lasting hypersensitivity) (By similarity).

Cellular Location

Cell membrane; Single-pass type I membrane protein. Endoplasmic reticulum membrane; Single-pass type I membrane protein Golgi apparatus membrane; Single-pass type I membrane protein. Nucleus membrane; Single-pass type I membrane protein. Endosome. Endosome membrane. Nucleus. Note=In response to EGF, translocated from the cell membrane to the nucleus via Golgi and ER (PubMed:17909029, PubMed:20674546). Endocytosed upon activation by ligand (PubMed:17182860, PubMed:17909029, PubMed:27153536, PubMed:2790960). Colocalized with GPER1 in the nucleus of estrogen agonist-induced cancer-associated fibroblasts (CAF) (PubMed:20551055)

Tissue Location

Ubiquitously expressed. Isoform 2 is also expressed in ovarian cancers.

Anti-EGFR Picoband Antibody - Protocols

Provided below are standard protocols that you may find useful for product applications.

- [Western Blot](#)
- [Blocking Peptides](#)
- [Dot Blot](#)
- [Immunohistochemistry](#)
- [Immunofluorescence](#)
- [Immunoprecipitation](#)
- [Flow Cytometry](#)
- [Cell Culture](#)

Anti-EGFR Picoband Antibody - Images

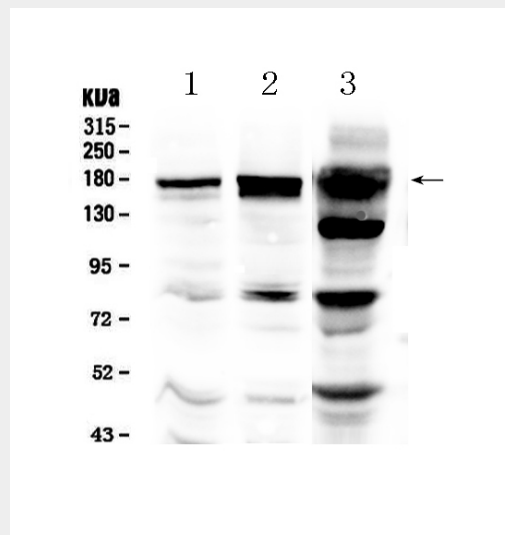


Figure 1. Western blot analysis of EGFR using anti-EGFR antibody (ABO12792).