

**Anti-Growth Hormone Antibody**  
Catalog # ABO12708**Specification****Anti-Growth Hormone Antibody - Product Information**

Application	WB, IHC
Primary Accession	<a href="#">P01241</a>
Host	Rabbit
Reactivity	Human
Clonality	Polyclonal
Format	Lyophilized

**Description**

Rabbit IgG polyclonal antibody for Somatotropin(GH1) detection. Tested with WB, IHC-P, ELISA in Human.

**Reconstitution**

Add 0.2ml of distilled water will yield a concentration of 500ug/ml.

**Anti-Growth Hormone Antibody - Additional Information**

**Gene ID** 2688

**Other Names**

Somatotropin, Growth hormone, GH, GH-N, Growth hormone 1, Pituitary growth hormone, GH1

**Calculated MW**

24847 MW KDa

**Application Details**

ELISA , 0.1-0.5 µg/ml, Human, -<br>Immunohistochemistry(Paraffin-embedded Section), 0.5-1 µg/ml, Human, By Heat<br>Western blot, 0.1-0.5 µg/ml, Human<br>

**Subcellular Localization**

Secreted.

**Protein Name**

Somatotropin

**Contents**

Each vial contains 0.9mg NaCl, 0.2mg Na<sub>2</sub>HPO<sub>4</sub>, 0.05mg NaN<sub>3</sub>. Carrier free (No BSA) form available in stock. If you want this antibody carrier free please specify "Carrier Free" or "No BSA" in your order note. "

**Immunogen**

E. coli-derived human GH recombinant protein(Position: F27-F217).

**Purification**

Immunogen affinity purified.

### Cross Reactivity

No cross reactivity with other proteins

### Storage

**At -20°C for one year. After reconstitution, at 4°C for one month. It can also be aliquotted and stored frozen at -20°C for a longer time. Avoid repeated freezing and thawing.**

### Sequence Similarities

Belongs to the somatotropin/prolactin family.

## Anti-Growth Hormone Antibody - Protein Information

**Name** GH1

### Function

Plays an important role in growth control. Its major role in stimulating body growth is to stimulate the liver and other tissues to secrete IGF-1. It stimulates both the differentiation and proliferation of myoblasts. It also stimulates amino acid uptake and protein synthesis in muscle and other tissues.

### Cellular Location

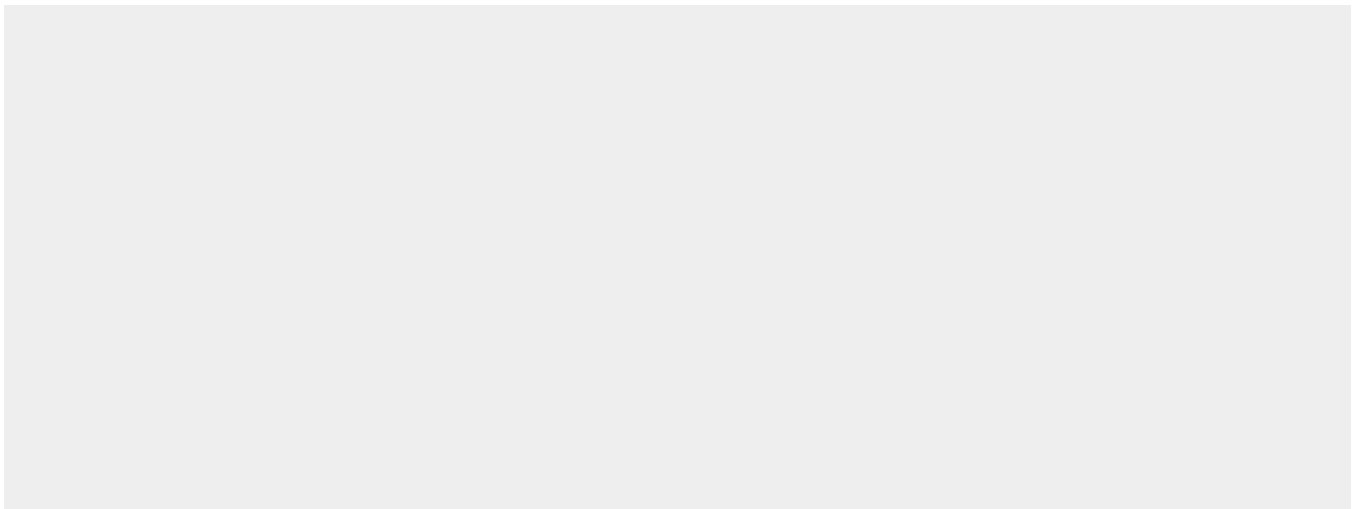
Secreted

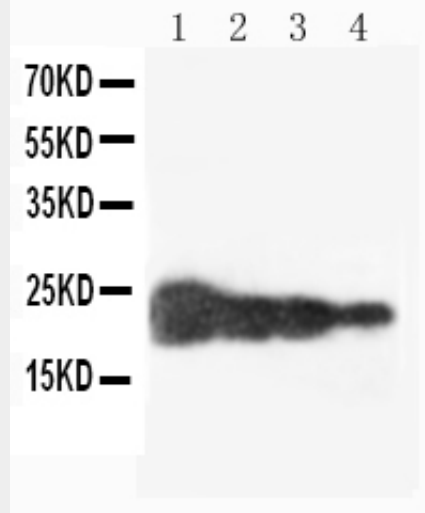
## Anti-Growth Hormone Antibody - Protocols

Provided below are standard protocols that you may find useful for product applications.

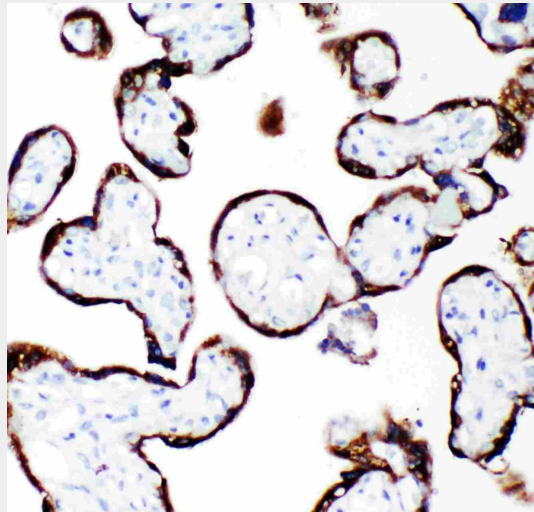
- [Western Blot](#)
- [Blocking Peptides](#)
- [Dot Blot](#)
- [Immunohistochemistry](#)
- [Immunofluorescence](#)
- [Immunoprecipitation](#)
- [Flow Cytometry](#)
- [Cell Culture](#)

## Anti-Growth Hormone Antibody - Images





Anti-human Growth Hormone antibody, ABO12708, Western blotting  
Lane 1: Recombinant Human GH Protein 10ng  
Lane 2: Recombinant Human GH Protein 5ng  
Lane 3: Recombinant Human GH Protein 2



Anti-human Growth Hormone antibody, ABO12708, IHC(P)  
IHC(P): Human Placenta Tissue

### **Anti-Growth Hormone Antibody - Background**

Growth Hormone(GH) is mapped to 17q22-q24. Growth hormone(GH) is synthesized by acidophilic or somatotrophic cells of the anterior pituitary gland. Human growth hormone has a molecular mass of 22,005 and contains 191 amino acid residues with 2 disulfide bridges. It binds two receptor molecules and thereby induces signal transduction through receptor dimerization. At high concentrations, GH acts as an antagonist because of a large difference in affinities at the respective binding sites.