

**Anti-human BCL-2 Antibody**  
Catalog # ABO12688**Specification**

---

**Anti-human BCL-2 Antibody - Product Information**

Application	<b>WB</b>
Primary Accession	<a href="#">P10415</a>
Host	<b>Rabbit</b>
Reactivity	<b>Human</b>
Clonality	<b>Polyclonal</b>
Format	<b>Lyophilized</b>

**Description**

Rabbit IgG polyclonal antibody for Apoptosis regulator Bcl-2(BCL2) detection. Tested with WB, ELISA in Human.

**Reconstitution**

Add 0.2ml of distilled water will yield a concentration of 500ug/ml.

**Anti-human BCL-2 Antibody - Additional Information**

**Gene ID** 596

**Other Names**

Apoptosis regulator Bcl-2, BCL2

**Calculated MW**

26266 MW KDa

**Application Details**

ELISA , 0.1-0.5 µg/ml, Human, -<br>Western blot, 0.1-0.5 µg/ml, Human<br>

**Subcellular Localization**

Mitochondrion outer membrane ; Single-pass membrane protein . Nucleus membrane ; Single-pass membrane protein . Endoplasmic reticulum membrane ; Single-pass membrane protein .

**Tissue Specificity**

Expressed in a variety of tissues.

**Protein Name**

Apoptosis regulator Bcl-2

**Contents**

Each vial contains 0.9mg NaCl, 0.2mg Na<sub>2</sub>HPO<sub>4</sub>, 0.05mg NaN<sub>3</sub>. Carrier free (No BSA) form available in stock. If you want this antibody carrier free please specify "Carrier Free" or "No BSA" in your order note. "

**Immunogen**

E. coli-derived human BCL-2 recombinant protein(Position: M1-D211).

**Purification**

Immunogen affinity purified.

**Cross Reactivity**

No cross reactivity with other proteins

**Storage**

**At -20°C for one year. After r°Constitution, at 4°C for one month. It°Can also be aliquotted and stored frozen at -20°C for a longer time.Avoid repeated freezing and thawing.**

**Sequence Similarities**

Belongs to the Bcl-2 family.

**Anti-human BCL-2 Antibody - Protein Information****Name** BCL2**Function**

Suppresses apoptosis in a variety of cell systems including factor-dependent lymphohematopoietic and neural cells (PubMed:<a href="http://www.uniprot.org/citations/1508712" target="\_blank">1508712</a>, PubMed:<a href="http://www.uniprot.org/citations/8183370" target="\_blank">8183370</a>). Regulates cell death by controlling the mitochondrial membrane permeability (PubMed:<a href="http://www.uniprot.org/citations/11368354" target="\_blank">11368354</a>). Appears to function in a feedback loop system with caspases (PubMed:<a href="http://www.uniprot.org/citations/11368354" target="\_blank">11368354</a>). Inhibits caspase activity either by preventing the release of cytochrome c from the mitochondria and/or by binding to the apoptosis-activating factor (APAF-1) (PubMed:<a href="http://www.uniprot.org/citations/11368354" target="\_blank">11368354</a>). Also acts as an inhibitor of autophagy: interacts with BECN1 and AMBRA1 during non-starvation conditions and inhibits their autophagy function (PubMed:<a href="http://www.uniprot.org/citations/18570871" target="\_blank">18570871</a>, PubMed:<a href="http://www.uniprot.org/citations/20889974" target="\_blank">20889974</a>, PubMed:<a href="http://www.uniprot.org/citations/21358617" target="\_blank">21358617</a>). May attenuate inflammation by impairing NLRP1-inflammasome activation, hence CASP1 activation and IL1B release (PubMed:<a href="http://www.uniprot.org/citations/17418785" target="\_blank">17418785</a>).

**Cellular Location**

Mitochondrion outer membrane; Single-pass membrane protein. Nucleus membrane; Single-pass membrane protein. Endoplasmic reticulum membrane; Single-pass membrane protein. Cytoplasm {ECO:0000250|UniProtKB:P10417}

**Tissue Location**

Expressed in a variety of tissues.

**Anti-human BCL-2 Antibody - Protocols**

Provided below are standard protocols that you may find useful for product applications.

- [Western Blot](#)
- [Blocking Peptides](#)
- [Dot Blot](#)
- [Immunohistochemistry](#)

- [Immunofluorescence](#)
- [Immunoprecipitation](#)
- [Flow Cytometry](#)
- [Cell Culture](#)

### Anti-human BCL-2 Antibody - Images

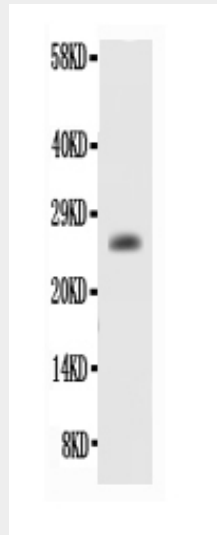


Figure. Western blot analysis of BCL-2 using anti- BCL-2 antibody (ABO12688). Electrophoresis was performed on a 5-20% SDS-PAGE gel at 70V (Stacking gel) / 90V (Resolving gel) for 2-3 hours. The sample well of each lane was loaded with 50ug of sample under reducing conditions. Lane : Recombinant Human Bcl-2 Protein 0.5ng, After Electrophoresis, proteins were transferred to a Nitrocellulose membrane at 150mA for 50-90 minutes. Blocked the membrane with 5% Non-fat Milk/ TBS for 1.5 hour at RT. The membrane was incubated with rabbit anti- BCL-2 antigen affinity purified polyclonal antibody (Catalog # ABO12688) at 0.5  $\mu$ g/mL overnight at 4 $^{\circ}$ C, then washed with TBS-0.1%Tween 3 times with 5 minutes each and probed with a goat anti-rabbit IgG-HRP secondary antibody at a dilution of 1:10000 for 1.5 hour at RT. The signal is developed using an Enhanced Chemiluminescent detection (ECL) kit with Tanon 5200 system. A specific band was detected for BCL-2 at approximately 26KD. The expected band size for BCL-2 is at 26KD.

### Anti-human BCL-2 Antibody - Background

Immunoreactive BCL2 protein in the neoplastic cells of almost all follicular lymphomas whereas no BCL2 protein was detected in follicles affected by nonneoplastic processes or in normal lymphoid tissue. Every tumor with molecular-genetic evidence of t(14;18) translocation expressed detectable levels of BCL2 protein, regardless of whether the breakpoint was located in or at a distance from the BCL2 gene. Overexpression of BCL2 blocks the apoptotic death of a pro-B-lymphocyte cell line.