

**Anti-TRIB2 Picoband Antibody**  
Catalog # ABO12586**Specification****Anti-TRIB2 Picoband Antibody - Product Information**

Application	WB, IHC
Primary Accession	<a href="#">O92519</a>
Host	Rabbit
Reactivity	Human, Mouse, Rat
Clonality	Polyclonal
Format	Lyophilized

**Description**

Rabbit IgG polyclonal antibody for Tribbles homolog 2 (TRIB2) detection. Tested with WB, IHC-P in Human; Mouse; Rat.

**Reconstitution**

Add 0.2ml of distilled water will yield a concentration of 500ug/ml.

**Anti-TRIB2 Picoband Antibody - Additional Information**

**Gene ID** 28951

**Other Names**

Tribbles homolog 2, TRB-2, TRIB2 ([HGNC:30809](http://www.genenames.org/cgi-bin/gene_symbol_report?hgnc_id=30809))

**Calculated MW**

38801 MW KDa

**Application Details**

Immunohistochemistry (Paraffin-embedded Section), 0.5-1 µg/ml, Human, Mouse, Rat, By Heat  
Western blot, 0.1-0.5 µg/ml, Human

**Subcellular Localization**

Cytoplasm . Cytoplasm, cytoskeleton . May associate with the cytoskeleton. .

**Tissue Specificity**

Highly expressed in peripheral blood leukocytes. .

**Protein Name**

Tribbles homolog 2

**Contents**

Each vial contains 5mg BSA, 0.9mg NaCl, 0.2mg Na<sub>2</sub>HPO<sub>4</sub>, 0.05mg Na<sub>3</sub>.

**Immunogen**

A synthetic peptide corresponding to a sequence in the middle region of human TRIB2 (175-211aa DLKLRKFIFKDEERTRVKLESLEDAYILRGDDDSLSD), identical to the related mouse sequence.

**Purification**

Immunogen affinity purified.

**Cross Reactivity**

No cross reactivity with other proteins.

**Storage**

**At -20°C for one year. After r°Constitution, at 4°C for one month. It°Can also be aliquotted and stored frozen at -20°C for a longer time.Avoid repeated freezing and thawing.**

**Anti-TRIB2 Picoband Antibody - Protein Information**

**Name** TRIB2 ([HGNC:30809](#))

**Function**

Interacts with MAPK kinases and regulates activation of MAP kinases. Does not display kinase activity (By similarity).

**Cellular Location**

Cytoplasm. Cytoplasm, cytoskeleton. Note=May associate with the cytoskeleton.

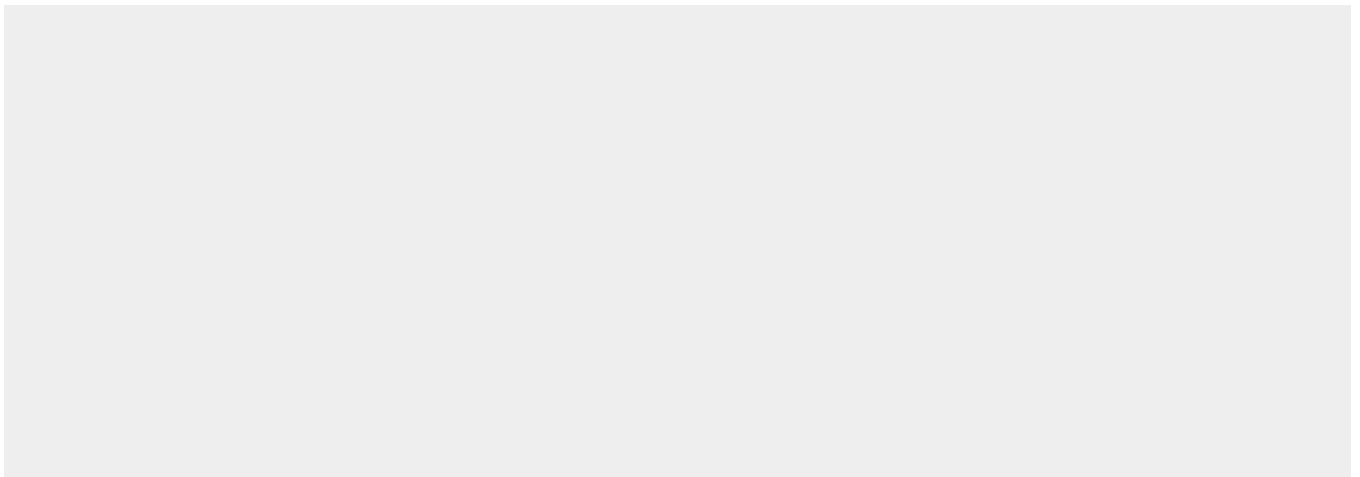
**Tissue Location**

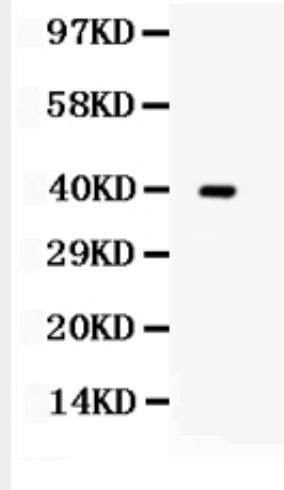
Highly expressed in peripheral blood leukocytes.

**Anti-TRIB2 Picoband Antibody - Protocols**

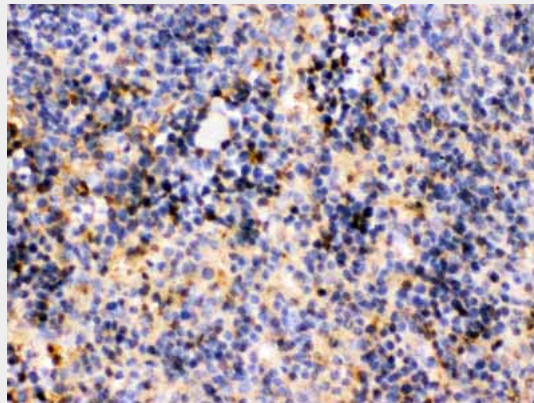
Provided below are standard protocols that you may find useful for product applications.

- [Western Blot](#)
- [Blocking Peptides](#)
- [Dot Blot](#)
- [Immunohistochemistry](#)
- [Immunofluorescence](#)
- [Immunoprecipitation](#)
- [Flow Cytometry](#)
- [Cell Culture](#)

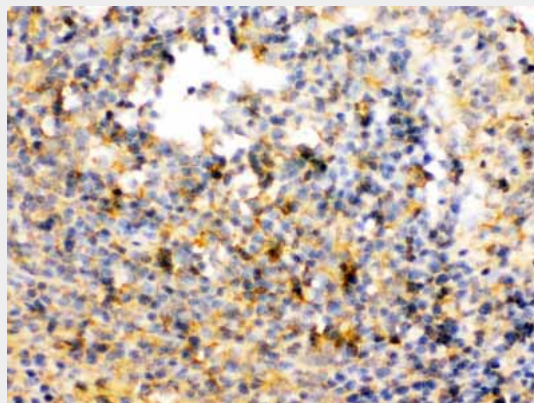
**Anti-TRIB2 Picoband Antibody - Images**



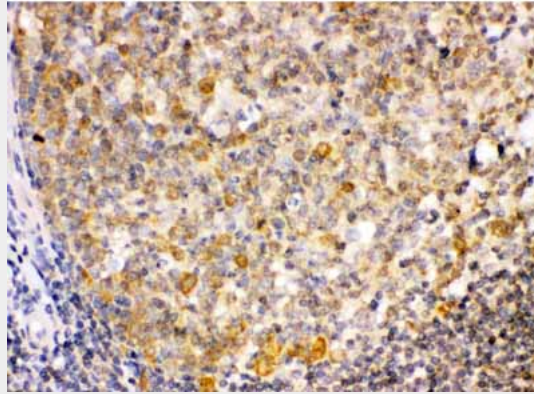
Western blot analysis of TRIB2 expression in SW620 whole cell lysates (lane 1). TRIB2 at 39KD was detected using rabbit anti- TRIB2 Antigen Affinity purified polyclonal antibody (Catalog # ABO12586) at 0.5 µg/mL. The blot was developed using chemiluminescence (ECL) method .



TRIB2 was detected in paraffin-embedded sections of mouse spleen tissues using rabbit anti-TRIB2 Antigen Affinity purified polyclonal antibody (Catalog # ABO12586) at 1 µg/mL. The immunohistochemical section was developed using SABC method .



TRIB2 was detected in paraffin-embedded sections of rat spleen tissues using rabbit anti- TRIB2 Antigen Affinity purified polyclonal antibody (Catalog # ABO12586) at 1 µg/mL. The immunohistochemical section was developed using SABC method .



TRIB2 was detected in paraffin-embedded sections of human tonsil tissues using rabbit anti-TRIB2 Antigen Affinity purified polyclonal antibody (Catalog # ABO12586) at 1  $\mu$ g/mL. The immunohistochemical section was developed using SABC method .

#### **Anti-TRIB2 Picoband Antibody - Background**

Tribbles homolog 2 is a protein that in humans is encoded by the TRIB2 gene. This gene encodes one of three members of the Tribbles family. The Tribbles members share a Trb domain, which is homologous to protein serine-threonine kinases, but lacks the active site lysine and probably lacks a catalytic function. The Tribbles proteins interact and modulate the activity of signal transduction pathways in a number of physiological and pathological processes. This Tribbles member induces apoptosis of cells mainly of the hematopoietic origin. It has been identified as a protein up-regulated by inflammatory stimuli in myeloid (THP-1) cells, and also as an oncogene that inactivates the transcription factor C/EBP alpha (CCAAT/enhancer-binding protein alpha) and causes acute myelogenous leukemia. Alternatively spliced transcript variants have been found for this gene.