

Anti-Cdc25C Picoband Antibody
Catalog # ABO12535**Specification****Anti-Cdc25C Picoband Antibody - Product Information**

Application	WB
Primary Accession	P30307
Host	Rabbit
Reactivity	Human
Clonality	Polyclonal
Format	Lyophilized

Description

Rabbit IgG polyclonal antibody for M-phase inducer phosphatase 3(CDC25C) detection. Tested with WB in Human.

Reconstitution

Add 0.2ml of distilled water will yield a concentration of 500ug/ml.

Anti-Cdc25C Picoband Antibody - Additional Information

Gene ID 995

Other Names

M-phase inducer phosphatase 3, 3.1.3.48, Dual specificity phosphatase Cdc25C, CDC25C

Calculated MW

53365 MW KDa

Application Details

Western blot, 0.1-0.5 µg/ml, Human

Subcellular Localization

Nucleus .

Protein Name

M-phase inducer phosphatase 3

Contents

Each vial contains 5mg BSA, 0.9mg NaCl, 0.2mg Na₂HPO₄, 0.05mg NaN₃.

Immunogen

A synthetic peptide corresponding to a sequence at the C-terminus of human Cdc25C (435-473aa MHHQDHKTELLRCRSQSKVQEGERQLREQIALLVKDMSP), different from the related mouse sequence by ten amino acids.

Purification

Immunogen affinity purified.

Cross Reactivity

No cross reactivity with other proteins.

Storage

At -20°C for one year. After r°Constitution, at 4°C for one month. It°Can also be aliquotted and stored frozen at -20°C for a longer time.Avoid repeated freezing and thawing.

Anti-Cdc25C Picoband Antibody - Protein Information

Name CDC25C

Function

Functions as a dosage-dependent inducer in mitotic control. Tyrosine protein phosphatase required for progression of the cell cycle (PubMed:8119945). When phosphorylated, highly effective in activating G2 cells into prophase (PubMed:8119945). Directly dephosphorylates CDK1 and activates its kinase activity (PubMed:8119945).

Cellular Location

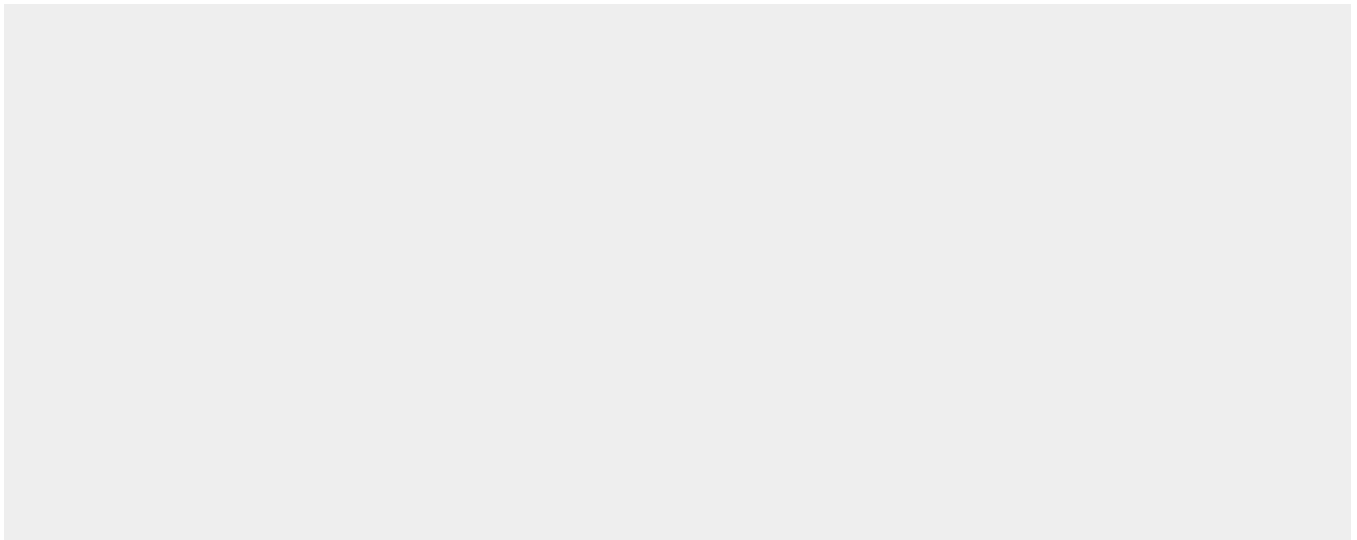
Nucleus

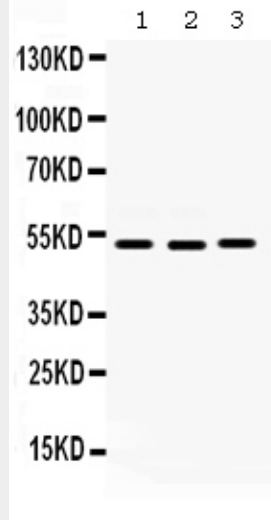
Anti-Cdc25C Picoband Antibody - Protocols

Provided below are standard protocols that you may find useful for product applications.

- [Western Blot](#)
- [Blocking Peptides](#)
- [Dot Blot](#)
- [Immunohistochemistry](#)
- [Immunofluorescence](#)
- [Immunoprecipitation](#)
- [Flow Cytometry](#)
- [Cell Culture](#)

Anti-Cdc25C Picoband Antibody - Images





Western blot analysis of Cdc25C expression in HELA whole cell lysates (lane 1), SW620 whole cell lysates (lane 2) and MCF-7 whole cell lysates (lane 3). Cdc25C at 53KD was detected using rabbit anti- Cdc25C Antigen Affinity purified polyclonal antibody (Catalog # ABO12535) at 0.5 µg/mL. The blot was developed using chemiluminescence (ECL) method .

Anti-Cdc25C Picoband Antibody - Background

M-phase inducer phosphatase 3 is an enzyme that in humans is encoded by the CDC25C gene. This gene is highly conserved during evolution and it plays a key role in the regulation of cell division. The encoded protein is a tyrosine phosphatase and belongs to the Cdc25 phosphatase family. It directs dephosphorylation of cyclin B-bound CDC2 (CDK1) and triggers entry into mitosis. Also, it is thought to suppress p53-induced growth arrest. Multiple alternatively spliced transcript variants of this gene have been described, however, the full-length nature of many of them is not known.