

Anti-Actin Picoband Antibody
Catalog # ABO12437**Specification****Anti-Actin Picoband Antibody - Product Information**

Application	WB, IHC
Primary Accession	P68133
Host	Rabbit
Reactivity	Human, Mouse, Rat
Clonality	Polyclonal
Format	Lyophilized

Description

Rabbit IgG polyclonal antibody for Actin, alpha skeletal muscle(ACTA1) detection. Tested with WB, IHC-P in Human;Mouse;Rat.

Reconstitution

Add 0.2ml of distilled water will yield a concentration of 500ug/ml.

Anti-Actin Picoband Antibody - Additional Information

Gene ID 58

Other Names

Actin, alpha skeletal muscle, Alpha-actin-1, ACTA1, ACTA

Calculated MW

42051 MW KDa

Application Details

Immunohistochemistry(Paraffin-embedded Section), 0.5-1 µg/ml, Human, Mouse, Rat, By Heat
Western blot, 0.1-0.5 µg/ml, Human, Mouse, Rat

Subcellular Localization

Cytoplasm, cytoskeleton.

Protein Name

Actin, alpha skeletal muscle

Contents

Each vial contains 5mg BSA, 0.9mg NaCl, 0.2mg Na₂HPO₄, 0.05mg Na₃.

Immunogen

A synthetic peptide corresponding to a sequence at the C-terminus of human Actin (277-308aa HETTYNSIMKCDIDIRKDLYANNVMSGGTTMY), identical to the related mouse and rat sequences.

Purification

Immunogen affinity purified.

Cross Reactivity

No cross reactivity with other proteins.

Storage

At -20°C for one year. After reconstitution, at 4°C for one month. It can also be aliquotted and stored frozen at -20°C for a longer time. Avoid repeated freezing and thawing.

Anti-Actin Picoband Antibody - Protein Information

Name ACTA1

Synonyms ACTA

Function

Actins are highly conserved proteins that are involved in various types of cell motility and are ubiquitously expressed in all eukaryotic cells.

Cellular Location

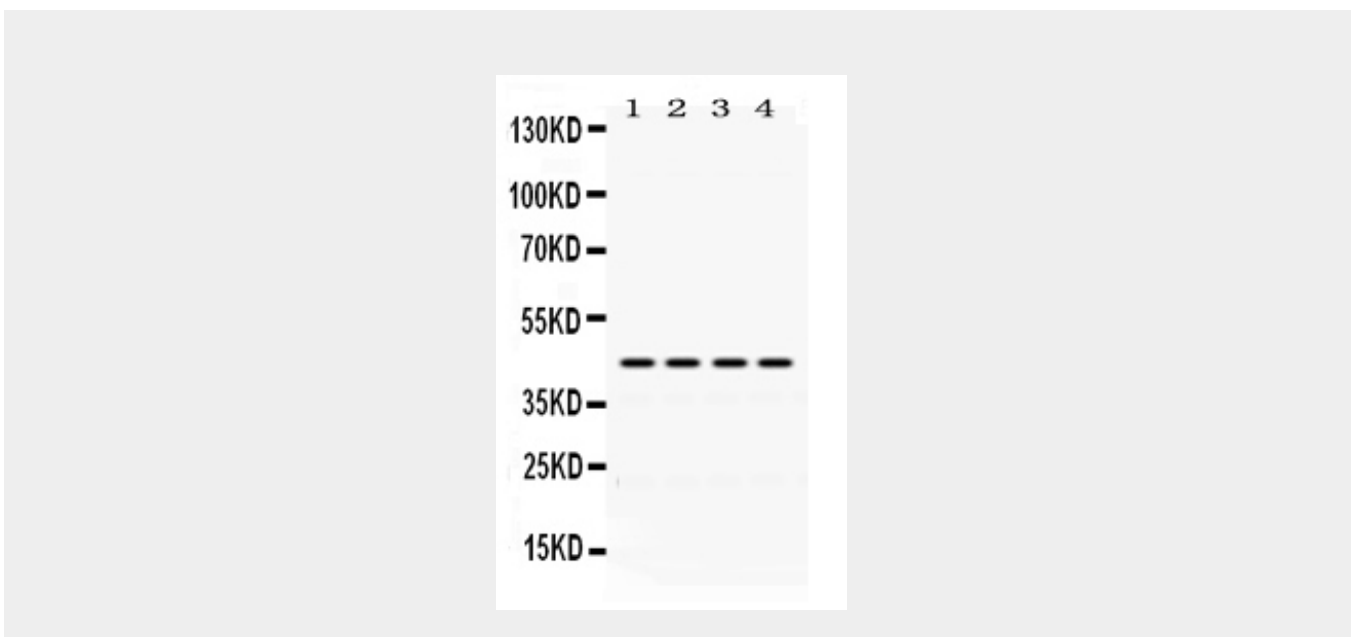
Cytoplasm, cytoskeleton.

Anti-Actin Picoband Antibody - Protocols

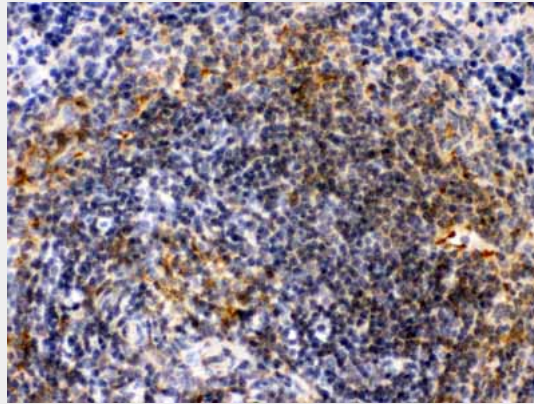
Provided below are standard protocols that you may find useful for product applications.

- [Western Blot](#)
- [Blocking Peptides](#)
- [Dot Blot](#)
- [Immunohistochemistry](#)
- [Immunofluorescence](#)
- [Immunoprecipitation](#)
- [Flow Cytometry](#)
- [Cell Culture](#)

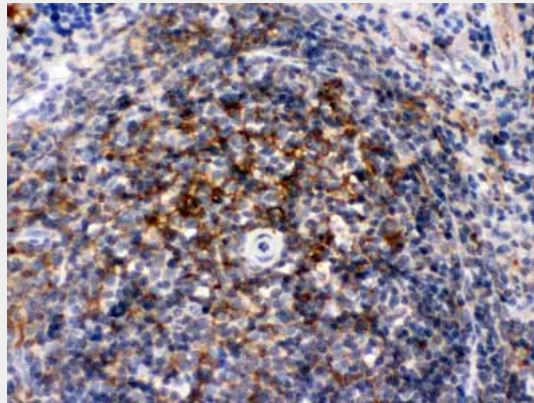
Anti-Actin Picoband Antibody - Images



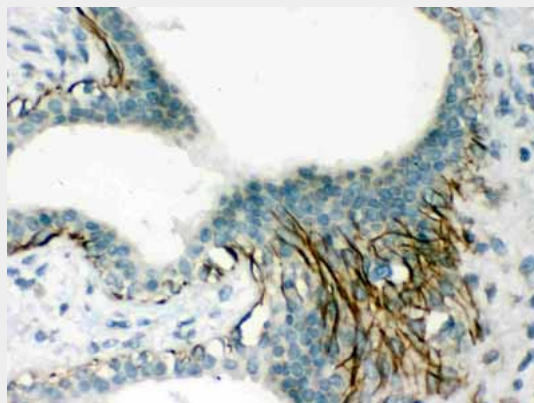
Anti- Actin Picoband antibody, ABO12437, Western blotting All lanes: Anti Actin (ABO12437) at 0.5ug/ml Lane 1: Rat Spleen Tissue Lysate at 50ug Lane 2: Mouse Spleen Tissue Lysate at 50ug Lane 3: HELA Whole Cell Lysate at 40ug Lane 4: MCF-7 Whole Cell Lysate at 40ug Predicted bind size: 42KD Observed bind size: 42KD



Anti- Actin Picoband antibody, ABO12437, IHC(P) IHC(P): Mouse Spleen Tissue



Anti- Actin Picoband antibody, ABO12437, IHC(P) IHC(P): Rat Spleen Tissue



Anti- Actin Picoband antibody, ABO12437, IHC(P) IHC(P): Human Mammary Cancer Tissue

Anti-Actin Picoband Antibody - Background

Actin, a highly conserved protein, is a major component of both the cytoskeletal and contractile structures in the cell types. It varies in amount, being related to the type of differentiation and to the functional state of cells and tissues. The actins exhibit over 90% sequence homology, but each isoform has a unique NH₂-terminal sequence. The isoforms are comprised of three alpha-actin, one beta-actin, two gamma-actin. Because the amino acid sequence of the C-terminal is the same for

almost all actins, this antibody has been raised using a synthetic peptide corresponding to the C-terminal 11 residues.