

Anti-Involucrin Picoband Antibody
Catalog # ABO12398

Specification

Anti-Involucrin Picoband Antibody - Product Information

Application	WB
Primary Accession	P07476
Host	Rabbit
Reactivity	Human
Clonality	Polyclonal
Format	Lyophilized

Description

Rabbit IgG polyclonal antibody for Involucrin(IVL) detection. Tested with WB in Human.

Reconstitution

Add 0.2ml of distilled water will yield a concentration of 500ug/ml.

Anti-Involucrin Picoband Antibody - Additional Information

Gene ID 3713

Other Names

Involucrin, IVL

Calculated MW

68479 MW KDa

Application Details

Western blot, 0.1-0.5 µg/ml, Human

Subcellular Localization

Cytoplasm. Constituent of the scaffolding of the cornified envelope.

Tissue Specificity

Keratinocytes of epidermis and other stratified squamous epithelia.

Protein Name

Involucrin

Contents

Each vial contains 5mg BSA, 0.9mg NaCl, 0.2mg Na₂HPO₄, 0.05mg Na₃N.

Immunogen

A synthetic peptide corresponding to a sequence at the C-terminus of human Involucrin (551-585aa QVQDIQPALPTKGEVLLPVEHQKQKQEVQWPPKHK).

Purification

Immunogen affinity purified.

Cross Reactivity

No cross reactivity with other proteins

Storage

At -20°C for one year. After reconstitution, at 4°C for one month. It can also be aliquotted and stored frozen at -20°C for a longer time. Avoid repeated freezing and thawing.

Anti-Involucrin Picoband Antibody - Protein Information

Name IVL

Function

Part of the insoluble cornified cell envelope (CE) of stratified squamous epithelia.

Cellular Location

Cytoplasm. Note=Constituent of the scaffolding of the cornified envelope

Tissue Location

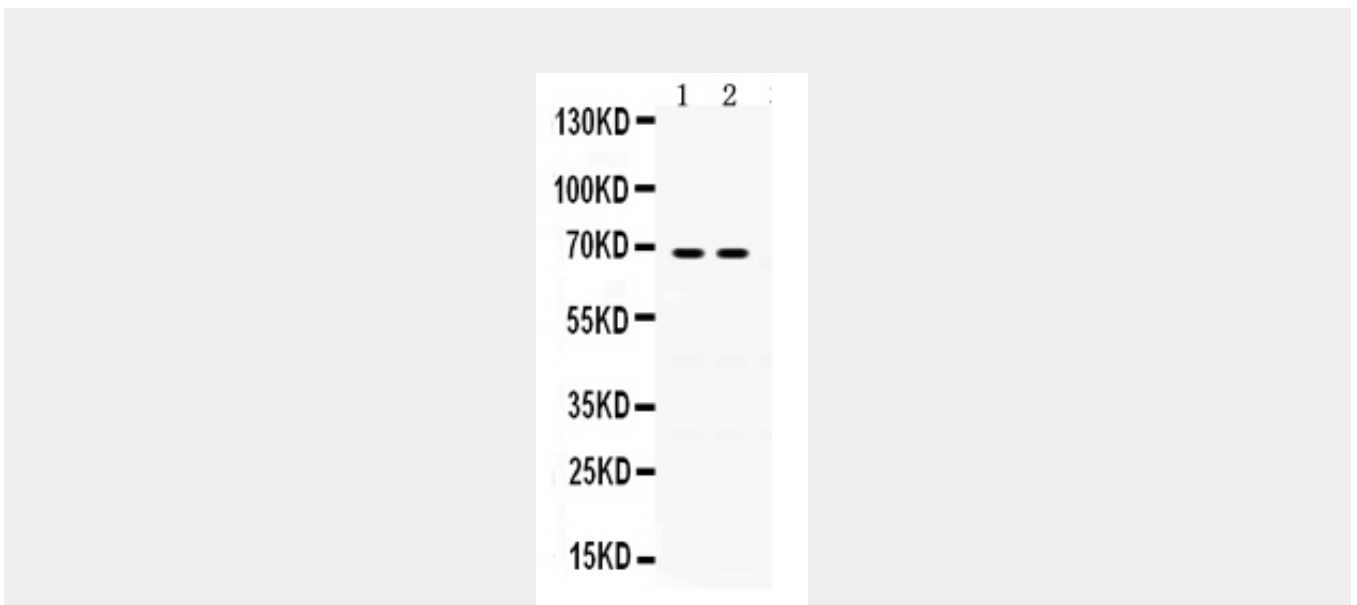
Keratinocytes of epidermis and other stratified squamous epithelia

Anti-Involucrin Picoband Antibody - Protocols

Provided below are standard protocols that you may find useful for product applications.

- [Western Blot](#)
- [Blocking Peptides](#)
- [Dot Blot](#)
- [Immunohistochemistry](#)
- [Immunofluorescence](#)
- [Immunoprecipitation](#)
- [Flow Cytometry](#)
- [Cell Culture](#)

Anti-Involucrin Picoband Antibody - Images



Anti- Involucrin Picoband antibody, ABO12398, Western blotting
All lanes: Anti Involucrin (ABO12398) at 0.5ug/ml
Lane 1: A431 Whole Cell Lysate at 40ug
Lane 2: A549 Whole Cell Lysate at 40ug
Predicted bind size: 68KD
Observed bind size: 68KD

Anti-Involucrin Picoband Antibody - Background

Involucrin is a protein component of human skin and in humans is encoded by the IVL gene. It is a highly reactive, soluble, transglutaminase substrate protein present in keratinocytes of epidermis and other stratified squamous epithelia. It first appears in the cell cytosol, but ultimately becomes cross-linked to membrane proteins by transglutaminase thus helping in the formation of an insoluble envelope beneath the plasma membrane functioning as a glutamyl donor during assembly of the cornified envelope. Additionally, Involucrin is synthesised in the stratum spinosum and cross linked in the stratum granulosum by the transglutaminase enzyme that makes it highly stable. Thus it provides structural support to the cell, thereby allowing the cell to resist invasion by micro-organisms.