

Anti-IGFBP-3 Antibody
Catalog # ABO12396**Specification****Anti-IGFBP-3 Antibody - Product Information**

Application	WB, IHC
Primary Accession	P17936
Host	Rabbit
Reactivity	Human, Rat
Clonality	Polyclonal
Format	Lyophilized

Description

Rabbit IgG polyclonal antibody for Insulin-like growth factor-binding protein 3(IGFBP3) detection. Tested with WB, IHC-P, ELISA in Human;Rat.

Reconstitution

Add 0.2ml of distilled water will yield a concentration of 500ug/ml.

Anti-IGFBP-3 Antibody - Additional Information

Gene ID 3486

Other Names

Insulin-like growth factor-binding protein 3, IBP-3, IGF-binding protein 3, IGFBP-3, IGFBP3, IBP3

Calculated MW

31674 MW KDa

Application Details

Immunohistochemistry(Paraffin-embedded Section), 0.5-1 µg/ml, Human, By Heat

ELISA , 0.1-0.5 µg/ml, Human, -
Western blot, 0.1-0.5 µg/ml, Human, Rat

Subcellular Localization

Secreted .

Tissue Specificity

Expressed by most tissues. Present in plasma.

Protein Name

Insulin-like growth factor-binding protein 3

Contents

Each vial contains 5mg BSA, 0.9mg NaCl, 0.2mg Na₂HPO₄, 0.05mg NaN₃.

Immunogen

A synthetic peptide corresponding to a sequence at the C-terminus of human IGFBP-3 (214-252aa RREMEDTLNHLKFLNVLSRPGVHIPPNCDDKGGFYKKKQCR), identical to the related mouse and rat sequences.

Purification

Immunogen affinity purified.

Cross Reactivity

No cross reactivity with other proteins

Storage

At -20°C for one year. After reconstitution, at 4°C for one month. It can also be aliquotted and stored frozen at -20°C for a longer time. Avoid repeated freezing and thawing.

Anti-IGFBP-3 Antibody - Protein Information

Name IGFBP3

Synonyms IBP3

Function

IGF-binding proteins prolong the half-life of the IGFs and have been shown to either inhibit or stimulate the growth promoting effects of the IGFs on cell culture. They alter the interaction of IGFs with their cell surface receptors. Also exhibits IGF-independent antiproliferative and apoptotic effects mediated by its receptor TMEM219/IGFBP-3R. Inhibits the positive effect of humanin on insulin sensitivity (PubMed: [19623253](http://www.uniprot.org/citations/19623253)). Promotes testicular germ cell apoptosis (PubMed: [19952275](http://www.uniprot.org/citations/19952275)).

Cellular Location

Secreted.

Tissue Location

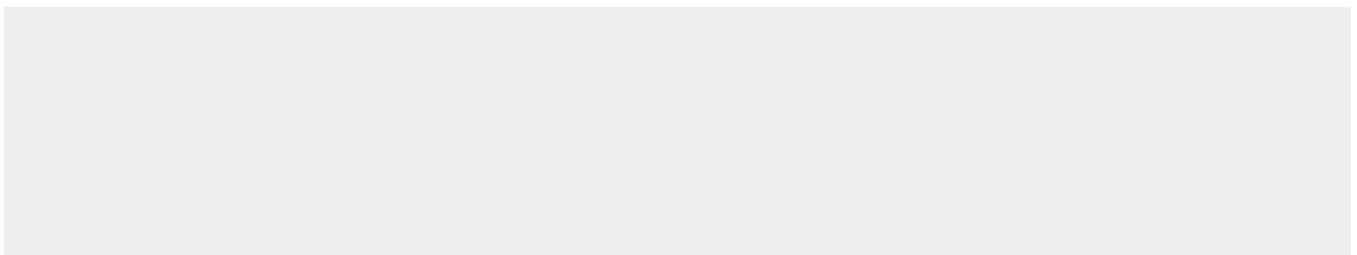
Expressed by most tissues. Present in plasma.

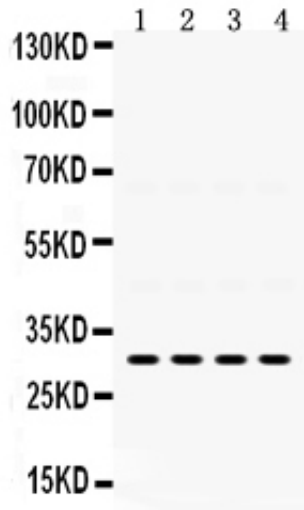
Anti-IGFBP-3 Antibody - Protocols

Provided below are standard protocols that you may find useful for product applications.

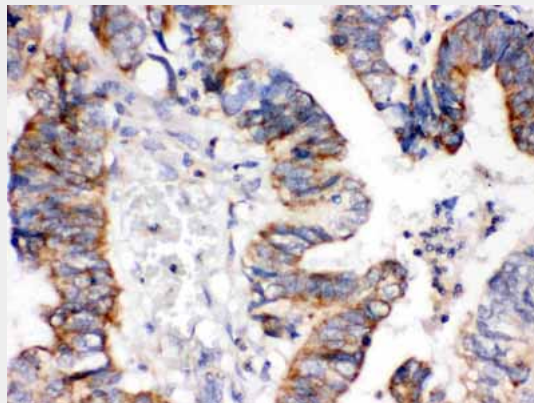
- [Western Blot](#)
- [Blocking Peptides](#)
- [Dot Blot](#)
- [Immunohistochemistry](#)
- [Immunofluorescence](#)
- [Immunoprecipitation](#)
- [Flow Cytometry](#)
- [Cell Culture](#)

Anti-IGFBP-3 Antibody - Images





Anti-IGFBP-3 Picoband antibody, ABO12396, Western blotting All lanes: Anti IGFBP-3 (ABO12396) at 0.5ug/ml Lane 1: Rat Kidney Tissue Lysate at 50ug Lane 2: Rat Liver Tissue Lysate at 50ug Lane 3: SGC Whole Cell Lysate at 40ug Lane 4: 22RV1 Whole Cell Lysate at 40ug Predicted bind size: 31KD Observed bind size: 31KD



Anti-IGFBP-3 Picoband antibody, ABO12396, IHC(P) IHC(P): Human Intestinal Cancer Tissue

Anti-IGFBP-3 Antibody - Background

IGFBP3, Insulin-like growth factor-binding protein 3, is a member of the insulin-like growth factor binding protein (IGFBP) family and encodes a protein with an IGFBP domain and a thyroglobulin type-I domain. IGFBP3 is located on chromosome 7. The protein forms a ternary complex with insulin-like growth factor acid-labile subunit (IGFALS) and either insulin-like growth factor (IGF) I or II. In this form, it circulates in the plasma, prolonging the half-life of IGFs and altering their interaction with cell surface receptors. Alternate transcriptional splice variants, encoding different isoforms, have been characterized.