

Anti-BMP-4 Antibody
Catalog # ABO12374

Specification

Anti-BMP-4 Antibody - Product Information

Application	WB
Primary Accession	P12644
Host	Rabbit
Reactivity	Human, Mouse
Clonality	Polyclonal
Format	Lyophilized

Description

Rabbit IgG polyclonal antibody for Bone morphogenetic protein 4(BMP4) detection. Tested with WB, ELISA in Human;Mouse.

Reconstitution

Add 0.2ml of distilled water will yield a concentration of 500ug/ml.

Anti-BMP-4 Antibody - Additional Information

Gene ID 652

Other Names

Bone morphogenetic protein 4, BMP-4, Bone morphogenetic protein 2B, BMP-2B, BMP4, BMP2B, DVR4

Calculated MW

46555 MW KDa

Application Details

ELISA , 0.1-0.5 µg/ml, Human, Mouse, -
Western blot, 0.1-0.5 µg/ml, Human, Mouse

Subcellular Localization

Secreted, extracellular space, extracellular matrix.

Tissue Specificity

Expressed in the lung and lower levels seen in the kidney. Present also in normal and neoplastic prostate tissues, and prostate cancer cell lines.

Protein Name

Bone morphogenetic protein 4

Contents

Each vial contains 5mg BSA, 0.9mg NaCl, 0.2mg Na₂HPO₄, 0.05mg Na₃.

Immunogen

A synthetic peptide corresponding to a sequence at the C-terminus of human BMP-4 (293-324aa SPKHHSQRARKKNKNCRRHSLYVDFSDVGWND), different from the related mouse and rat sequences by two amino acids.

Purification

Immunogen affinity purified.

Cross Reactivity

No cross reactivity with other proteins

Storage

At -20°C for one year. After r°Constitution, at 4°C for one month. It°Can also be aliquotted and stored frozen at -20°C for a longer time.Avoid repeated freezing and thawing.

Anti-BMP-4 Antibody - Protein Information

Name BMP4 ([HGNC:1071](#))

Function

Growth factor of the TGF-beta superfamily that plays essential roles in many developmental processes, including neurogenesis, vascular development, angiogenesis and osteogenesis (PubMed:31363885). Acts in concert with PTHLH/PTHRP to stimulate ductal outgrowth during embryonic mammary development and to inhibit hair follicle induction (By similarity). Initiates the canonical BMP signaling cascade by associating with type I receptor BMPR1A and type II receptor BMPR2 (PubMed:25868050, PubMed:8006002). Once all three components are bound together in a complex at the cell surface, BMPR2 phosphorylates and activates BMPR1A. In turn, BMPR1A propagates signal by phosphorylating SMAD1/5/8 that travel to the nucleus and act as activators and repressors of transcription of target genes (PubMed:25868050, PubMed:29212066). Positively regulates the expression of odontogenic development regulator MSX1 via inducing the IPO7- mediated import of SMAD1 to the nucleus (By similarity). Required for MSX1-mediated mesenchymal molar tooth bud development beyond the bud stage, via promoting Wnt signaling (By similarity). Acts as a positive regulator of odontoblast differentiation during mesenchymal tooth germ formation, expression is repressed during the bell stage by MSX1- mediated inhibition of CTNNB1 signaling (By similarity). Able to induce its own expression in dental mesenchymal cells and also in the neighboring dental epithelial cells via an MSX1-mediated pathway (By similarity). Can also signal through non-canonical BMP pathways such as ERK/MAP kinase, PI3K/Akt, or SRC cascades (PubMed:31363885). For example, induces SRC phosphorylation which, in turn, activates VEGFR2, leading to an angiogenic response (PubMed:31363885).

Cellular Location

Secreted, extracellular space, extracellular matrix

Tissue Location

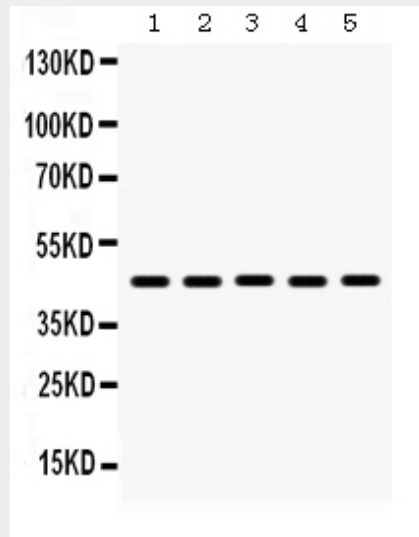
Expressed in the lung and lower levels seen in the kidney. Present also in normal and neoplastic prostate tissues, and prostate cancer cell lines

Anti-BMP-4 Antibody - Protocols

Provided below are standard protocols that you may find useful for product applications.

- [Western Blot](#)
- [Blocking Peptides](#)
- [Dot Blot](#)
- [Immunohistochemistry](#)
- [Immunofluorescence](#)
- [Immunoprecipitation](#)
- [Flow Cytometry](#)
- [Cell Culture](#)

Anti-BMP-4 Antibody - Images



Anti- BMP-4 Picoband antibody, ABO12374, Western blotting All lanes: Anti BMP-4 (ABO12374) at 0.5ug/ml
Lane 1: Mouse Lung Tissue Lysate at 50ug
Lane 2: Mouse Liver Tissue Lysate at 50ug
Lane 3: HEPA Whole Cell Lysate at 40ug
Lane 4: HEPG2 Whole Cell Lysate at 40ug
Lane 5: HELA Whole Cell Lysate at 40ug
Predicted bind size: 46KD
Observed bind size: 46KD

Anti-BMP-4 Antibody - Background

Bone morphogenetic protein 4 is a protein that in humans is encoded by the BMP4 gene. It is found on chromosome 14q22-q23. The protein encoded by this gene is a member of the bone morphogenetic protein family which is part of the transforming growth factor-beta superfamily. The superfamily includes large families of growth and differentiation factors. Bone morphogenetic proteins were originally identified by an ability of demineralized bone extract to induce endochondral osteogenesis in vivo in an extraskeletal site. This particular family member plays an important role in the onset of endochondral bone formation in humans, and a reduction in expression has been associated with a variety of bone diseases, including the heritable disorder Fibrodysplasia Ossificans Progressiva. Alternative splicing in the 5' untranslated region of this gene has been described and three variants are described, all encoding an identical protein.