

Anti-Lysozyme Picoband Antibody
Catalog # ABO12349**Specification**

Anti-Lysozyme Picoband Antibody - Product Information

Application	WB, IHC
Primary Accession	P61626
Host	Rabbit
Reactivity	Human, Rat
Clonality	Polyclonal
Format	Lyophilized

Description

Rabbit IgG polyclonal antibody for Lysozyme C (LYZ) detection. Tested with WB, IHC-P in Human;Rat.

Reconstitution

Add 0.2ml of distilled water will yield a concentration of 500ug/ml.

Anti-Lysozyme Picoband Antibody - Additional Information

Gene ID 4069

Other Names

Lysozyme C, 3.2.1.17, 1, 4-beta-N-acetylmuramidase C, LYZ, LZM

Calculated MW

16537 MW KDa

Application Details

Immunohistochemistry(Paraffin-embedded Section), 0.5-1 µg/ml, Human, By Heat

Western blot, 0.1-0.5 µg/ml, Human, Rat

Subcellular Localization

Secreted.

Protein Name

Lysozyme C

Contents

Each vial contains 5mg BSA, 0.9mg NaCl, 0.2mg Na₂HPO₄, 0.05mg Na₃.

Immunogen

A synthetic peptide corresponding to a sequence at the C-terminus of human Lysozyme (106-141aa NIADAVACAKRVVRDPQGIRAWVAWRNRCQNRDVRQ).

Purification

Immunogen affinity purified.

Cross Reactivity

No cross reactivity with other proteins

Storage

At -20°C for one year. After r°Constitution, at 4°C for one month. It°Can also be aliquotted and stored frozen at -20°C for a longer time.Avoid repeated freezing and thawing.

Anti-Lysozyme Picoband Antibody - Protein Information

Name LYZ

Synonyms LZM

Function

Lysozymes have primarily a bacteriolytic function; those in tissues and body fluids are associated with the monocyte-macrophage system and enhance the activity of immunoagents.

Cellular Location

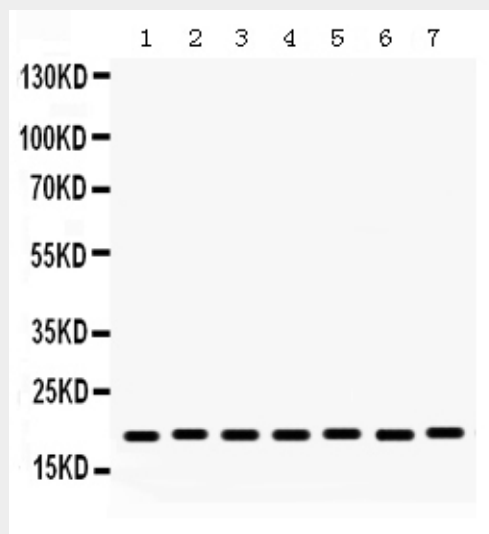
Secreted.

Anti-Lysozyme Picoband Antibody - Protocols

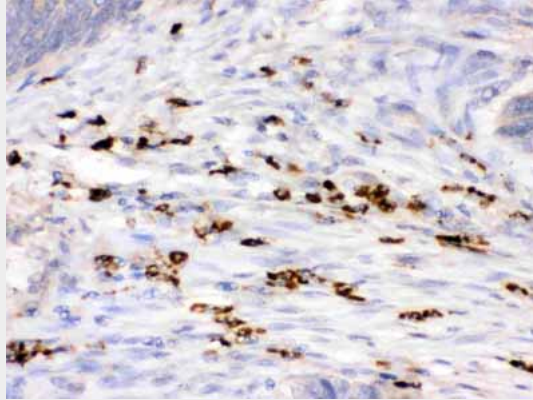
Provided below are standard protocols that you may find useful for product applications.

- [Western Blot](#)
- [Blocking Peptides](#)
- [Dot Blot](#)
- [Immunohistochemistry](#)
- [Immunofluorescence](#)
- [Immunoprecipitation](#)
- [Flow Cytometry](#)
- [Cell Culture](#)

Anti-Lysozyme Picoband Antibody - Images



Anti- Lysozyme Picoband antibody, ABO12349, Western blotting All lanes: Anti Lysozyme (ABO12349) at 0.5ug/ml Lane 1: Rat Intestine Tissue Lysate at 50ug Lane 2: Rat Kidney Tissue Lysate at 50ug Lane 3: Rat Liver Tissue Lysate at 50ug Lane 4: HELA Whole Cell Lysate at 40ug Lane 5: SW620 Whole Cell Lysate at 40ug Lane 6: 293T Whole Cell Lysate at 40ug Lane 7: HEPG2 Whole Cell Lysate at 40ug Predicted bind size: 17KD Observed bind size: 17KD



Anti- Lysozyme Picoband antibody, ABO12349, IHC(P) IHC(P): Human Intestinal Cancer Tissue

Anti-Lysozyme Picoband Antibody - Background

In humans, the lysozyme enzyme is encoded by the LYZ gene. This gene encodes human lysozyme, whose natural substrate is the bacterial cell wall peptidoglycan (cleaving the beta [1-4] glycosidic linkages between N-acetylmuramic acid and N-acetylglucosamine). Lysozyme is one of the antimicrobial agents found in human milk, and is also present in spleen, lung, kidney, white blood cells, plasma, saliva, and tears. The protein has antibacterial activity against a number of bacterial species. Missense mutations in this gene have been identified in heritable renal amyloidosis.