

Anti-Eph Receptor A5 Picoband Antibody
Catalog # ABO12269**Specification****Anti-Eph Receptor A5 Picoband Antibody - Product Information**

Application	WB
Primary Accession	P54756
Host	Rabbit
Reactivity	Human, Mouse, Rat
Clonality	Polyclonal
Format	Lyophilized

Description

Rabbit IgG polyclonal antibody for Ephrin type-A receptor 5(EPHA5) detection. Tested with WB in Human;Mouse;Rat.

Reconstitution

Add 0.2ml of distilled water will yield a concentration of 500ug/ml.

Anti-Eph Receptor A5 Picoband Antibody - Additional Information

Gene ID 2044

Other Names

Ephrin type-A receptor 5, 2.7.10.1, Brain-specific kinase, EPH homology kinase 1, EHK-1, EPH-like kinase 7, EK7, hEK7, EPHA5, BSK, EHK1, HEK7, TYRO4

Calculated MW

114803 MW KDa

Application Details

Western blot, 0.1-0.5 µg/ml, Mouse, Rat, Human

Subcellular Localization

Cell membrane ; Single-pass type I membrane protein . Cell projection, axon . Cell projection, dendrite .

Tissue Specificity

Almost exclusively expressed in the nervous system in cortical neurons, cerebellar Purkinje cells and pyramidal neurons within the cortex and hippocampus. Display an increasing gradient of expression from the forebrain to hindbrain and spinal cord. .

Protein Name

Ephrin type-A receptor 5

Contents

Each vial contains 5mg BSA, 0.9mg NaCl, 0.2mg Na₂HPO₄, 0.05mg Na₃.

Immunogen

A synthetic peptide corresponding to a sequence at the C-terminus of human Eph receptor A5

(1001-1032aa TLEDLRRRLGVTLVGHQKKIMNSLQEMKVQLVN), different from the related mouse sequence by two amino acids.

Purification

Immunogen affinity purified.

Cross Reactivity

No cross reactivity with other proteins

Storage

At -20°C for one year. After reconstitution, at 4°C for one month. It can also be aliquotted and stored frozen at -20°C for a longer time. Avoid repeated freezing and thawing.

Sequence Similarities

Belongs to the protein kinase superfamily. Tyr protein kinase family. Ephrin receptor subfamily.

Anti-Eph Receptor A5 Picoband Antibody - Protein Information

Name EPHA5

Synonyms BSK, EHK1, HEK7, TYRO4

Function

Receptor tyrosine kinase which binds promiscuously GPI- anchored ephrin-A family ligands residing on adjacent cells, leading to contact-dependent bidirectional signaling into neighboring cells. The signaling pathway downstream of the receptor is referred to as forward signaling while the signaling pathway downstream of the ephrin ligand is referred to as reverse signaling. Among GPI-anchored ephrin-A ligands, EFNA5 most probably constitutes the cognate/functional ligand for EPHA5. Functions as an axon guidance molecule during development and may be involved in the development of the retinotectal, entorhino- hippocampal and hippocamposeptal pathways. Together with EFNA5 plays also a role in synaptic plasticity in adult brain through regulation of synaptogenesis. In addition to its function in the nervous system, the interaction of EPHA5 with EFNA5 mediates communication between pancreatic islet cells to regulate glucose-stimulated insulin secretion (By similarity).

Cellular Location

Cell membrane; Single-pass type I membrane protein. Cell projection, axon {ECO:0000250|UniProtKB:P54757}. Cell projection, dendrite

Tissue Location

Almost exclusively expressed in the nervous system in cortical neurons, cerebellar Purkinje cells and pyramidal neurons within the cortex and hippocampus. Display an increasing gradient of expression from the forebrain to hindbrain and spinal cord

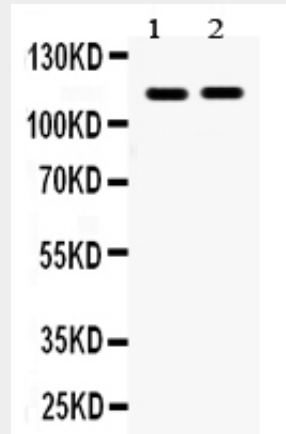
Anti-Eph Receptor A5 Picoband Antibody - Protocols

Provided below are standard protocols that you may find useful for product applications.

- [Western Blot](#)
- [Blocking Peptides](#)
- [Dot Blot](#)
- [Immunohistochemistry](#)

- [Immunofluorescence](#)
- [Immunoprecipitation](#)
- [Flow Cytometry](#)
- [Cell Culture](#)

Anti-Eph Receptor A5 Picoband Antibody - Images



Anti- Eph receptor A5 Picoband antibody, ABO12269, Western blotting All lanes: Anti Eph receptor A5 (ABO12269) at 0.5ug/ml Lane 1: Rat Brain Tissue Lysate at 50ug Lane 2: Mouse Brain Tissue Lysate at 50ug Predicted bind size: 114KD Observed bind size: 114KD

Anti-Eph Receptor A5 Picoband Antibody - Background

EPH receptor A5 (ephrin type-A receptor 5) is a protein that in humans is encoded by the EPHA5 gene. This gene belongs to the ephrin receptor subfamily of the protein-tyrosine kinase family. EPH and EPH-related receptors have been implicated in mediating developmental events, particularly in the nervous system. Receptors in the EPH subfamily typically have a single kinase domain and an extracellular region containing a Cys-rich domain and 2 fibronectin type III repeats. The ephrin receptors are divided into 2 groups based on the similarity of their extracellular domain sequences and their affinities for binding ephrin-A and ephrin-B ligands. Alternatively spliced transcript variants encoding different isoforms have been described.