

Anti-Cystatin B Antibody
Catalog # ABO12252**Specification**

Anti-Cystatin B Antibody - Product Information

Application	WB, IHC
Primary Accession	P04080
Host	Rabbit
Reactivity	Human
Clonality	Polyclonal
Format	Lyophilized

Description

Rabbit IgG polyclonal antibody for Cystatin-B(CSTB) detection. Tested with WB, IHC-P, ELISA in Human.

Reconstitution

Add 0.2ml of distilled water will yield a concentration of 500ug/ml.

Anti-Cystatin B Antibody - Additional Information

Gene ID 1476

Other Names

Cystatin-B, CPI-B, Liver thiol proteinase inhibitor, Stefin-B, CSTB, CST6, STFB

Calculated MW

11140 MW KDa

Application Details

ELISA , 0.1-0.5 µg/ml, Human, -
Immunohistochemistry(Paraffin-embedded Section), 0.5-1 µg/ml, Human, By Heat
Western blot, 0.1-0.5 µg/ml, Human

Subcellular Localization

Cytoplasm . Nucleus .

Protein Name

Cystatin-B

Contents

Each vial contains 5mg BSA, 0.9mg NaCl, 0.2mg Na₂HPO₄, 0.05mg Na₃N.

Immunogen

E. coli-derived human Stefin B recombinant protein (Position: M1-F98). Human Stefin B shares 78.6 % amino acid (aa) sequence identity with both mouse and rat Stefin B.

Purification

Immunogen affinity purified.

Cross Reactivity

No cross reactivity with other proteins

Storage

At -20°C for one year. After r°Constitution, at 4°C for one month. It°Can also be aliquotted and stored frozen at -20°C for a longer time.Avoid repeated freezing and thawing.

Sequence Similarities

Belongs to the cystatin family.

Anti-Cystatin B Antibody - Protein Information

Name CSTB

Synonyms CST6, STFB

Function

This is an intracellular thiol proteinase inhibitor. Tightly binding reversible inhibitor of cathepsins L, H and B.

Cellular Location

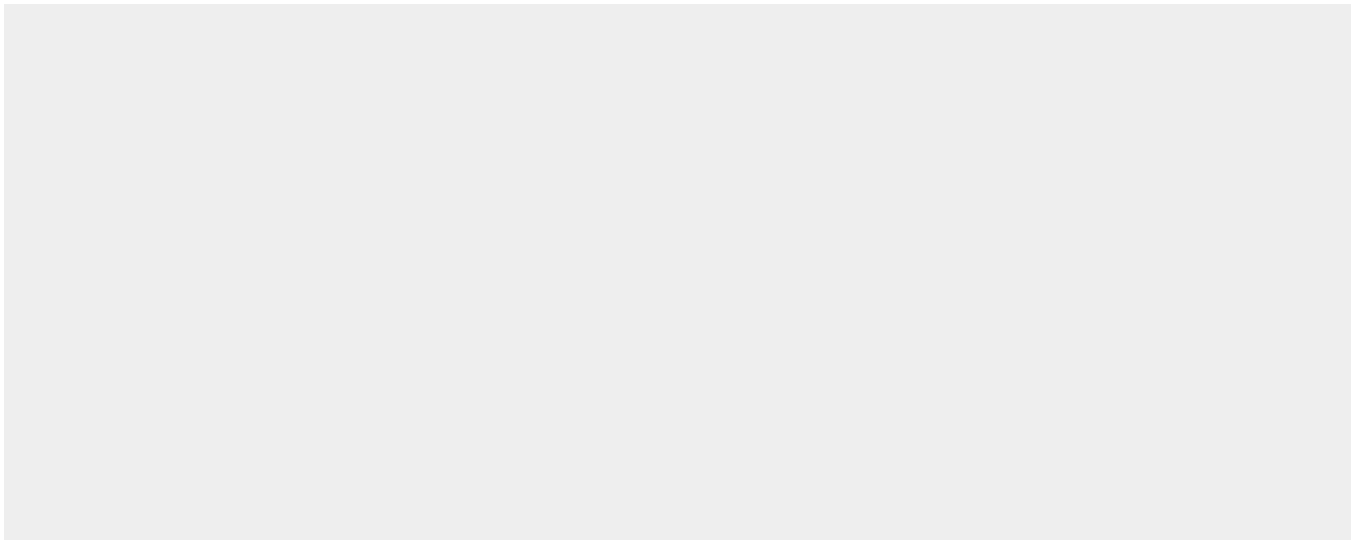
Cytoplasm. Nucleus

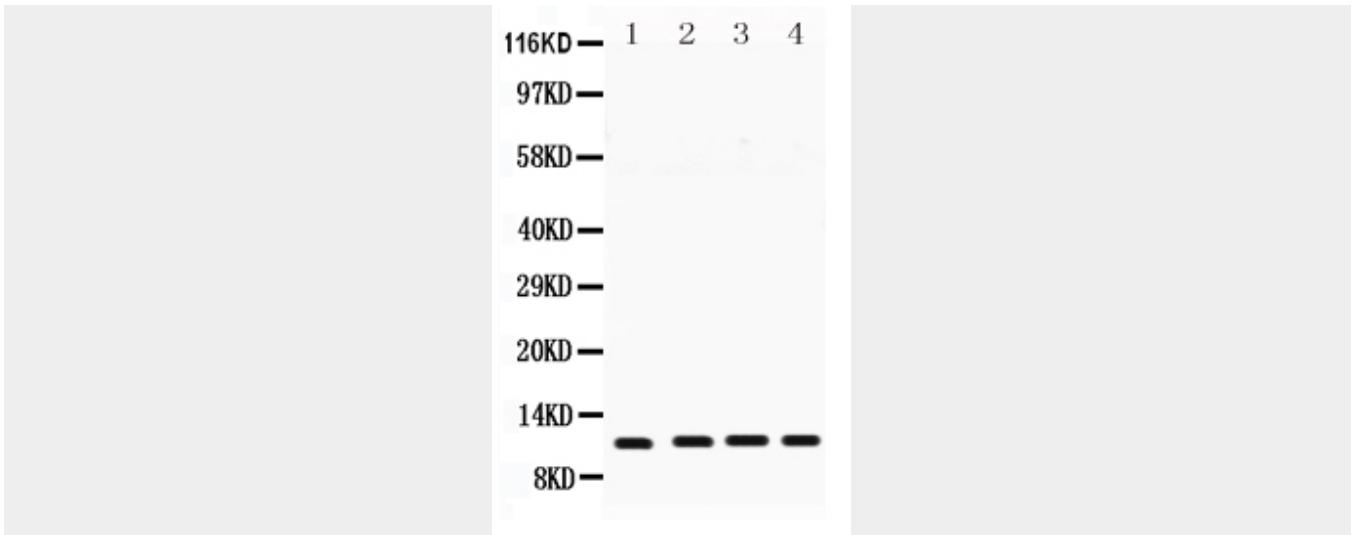
Anti-Cystatin B Antibody - Protocols

Provided below are standard protocols that you may find useful for product applications.

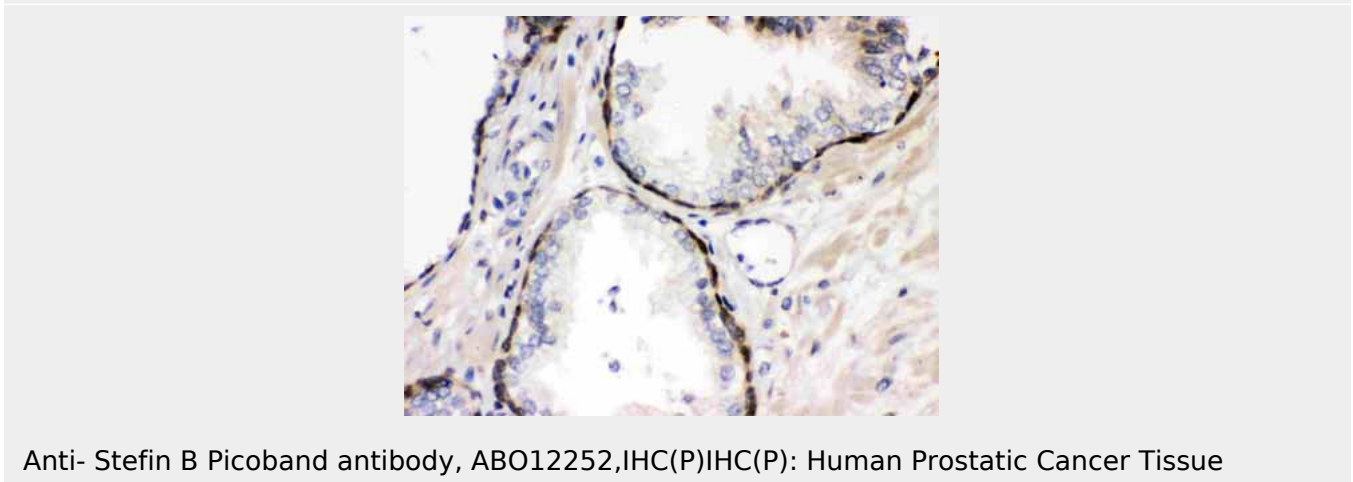
- [Western Blot](#)
- [Blocking Peptides](#)
- [Dot Blot](#)
- [Immunohistochemistry](#)
- [Immunofluorescence](#)
- [Immunoprecipitation](#)
- [Flow Cytometry](#)
- [Cell Culture](#)

Anti-Cystatin B Antibody - Images





Anti- Stefin B Picoband antibody, ABO12252, Western blotting All lanes: Anti Stefin B (ABO12252) at 0.5ug/ml Lane 1: Human Placenta Tissue Lysate at 50ug Lane 2: HELA Whole Cell Lysate at 40ug Lane 3: A431 Whole Cell Lysate at 40ug Lane 4: A549 Whole Cell Lysate at 40ug Predicted bind size: 11KD Observed bind size: 11KD



Anti- Stefin B Picoband antibody, ABO12252, IHC(P) IHC(P): Human Prostatic Cancer Tissue

Anti-Cystatin B Antibody - Background

Cystatin B (CSTB), also called STFB, is a small protein that is a member of the superfamily of cysteine protease inhibitors. It has been isolated from human spleen and liver and its amino acid sequence has been fully determined. The cystatin B gene is located on 21q22.3. It is widely distributed and is localized mostly intracellularly, but has been found extracellularly. The protein is able to form a dimer stabilized by noncovalent forces, inhibiting papain and cathepsins I, h and b. Its role is thought to be as a protector against the proteinases leaking from lysosomes. A cystatin B multiprotein complex might have a specific cerebellar function, and that the loss of this function might contribute to the etiopathogenesis of EPM1. Upon differentiation to myotubes, CSTB becomes excluded from the nucleus and lysosomes, suggesting that the subcellular distribution of CSTB is dependent on the differentiation status of the cell.