

Anti-CYR61/CCN1 Antibody
Catalog # ABO12236

Specification

Anti-CYR61/CCN1 Antibody - Product Information

Application	WB
Primary Accession	O00622
Host	Rabbit
Reactivity	Human, Rat
Clonality	Polyclonal
Format	Lyophilized

Description

Rabbit IgG polyclonal antibody for Protein CYR61(CYR61) detection. Tested with WB in Human;Rat.

Reconstitution

Add 0.2ml of distilled water will yield a concentration of 500ug/ml.

Anti-CYR61/CCN1 Antibody - Additional Information

Gene ID 3491

Other Names

Protein CYR61, CCN family member 1, Cysteine-rich angiogenic inducer 61, Insulin-like growth factor-binding protein 10, IBP-10, IGF-binding protein 10, IGFBP-10, Protein GIG1, CYR61, CCN1, GIG1, IGFBP10

Calculated MW

42027 MW KDa

Application Details

Western blot, 0.1-0.5 µg/ml, Human, Rat

Subcellular Localization

Secreted.

Protein Name

Protein CYR61

Contents

Each vial contains 5mg BSA, 0.9mg NaCl, 0.2mg Na₂HPO₄, 0.05mg Na₃.

Immunogen

E.coli-derived human CCN1 recombinant protein (Position: K54-D381). Human CCN1 shares 91.8% and 92.1% amino acid (aa) sequence identity with mouse and rat CCN1, respectively.

Purification

Immunogen affinity purified.

Cross Reactivity

No cross reactivity with other proteins

Storage

At -20°C for one year. After r°Constitution, at 4°C for one month. It°Can also be aliquotted and stored frozen at -20°C for a longer time.Avoid repeated freezing and thawing.

Sequence Similarities

Belongs to the CCN family.

Anti-CYR61/CCN1 Antibody - Protein Information

Name CCN1 ([HGNC:2654](#))

Function

Promotes cell proliferation, chemotaxis, angiogenesis and cell adhesion. Appears to play a role in wound healing by up- regulating, in skin fibroblasts, the expression of a number of genes involved in angiogenesis, inflammation and matrix remodeling including VEGA-A, VEGA-C, MMP1, MMP3, TIMP1, uPA, PAI-1 and integrins alpha-3 and alpha-5. CCN1-mediated gene regulation is dependent on heparin-binding. Down-regulates the expression of alpha-1 and alpha-2 subunits of collagen type-1. Promotes cell adhesion and adhesive signaling through integrin alpha-6/beta-1, cell migration through integrin alpha-v/beta-5 and cell proliferation through integrin alpha-v/beta-3.

Cellular Location

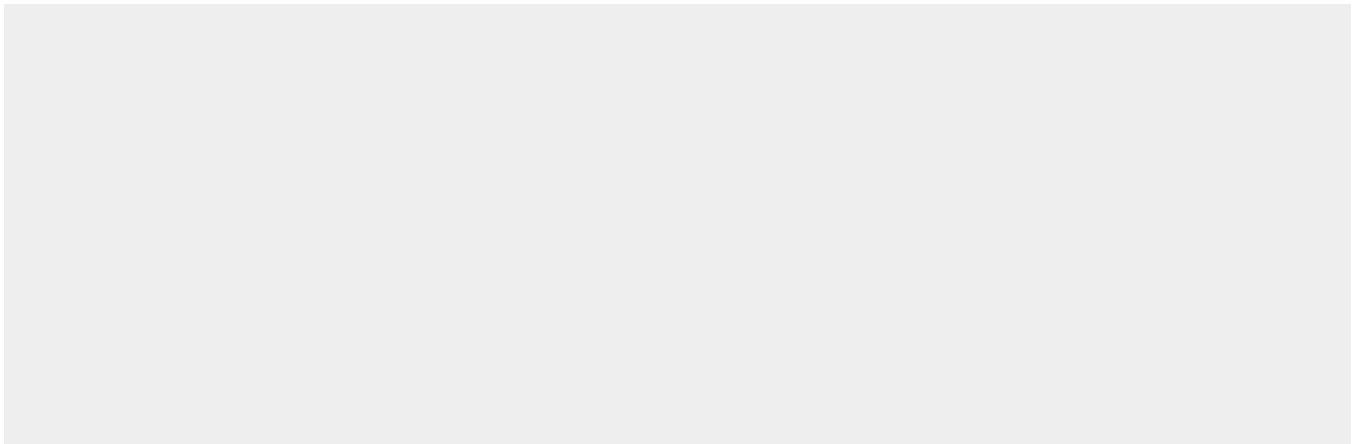
Secreted.

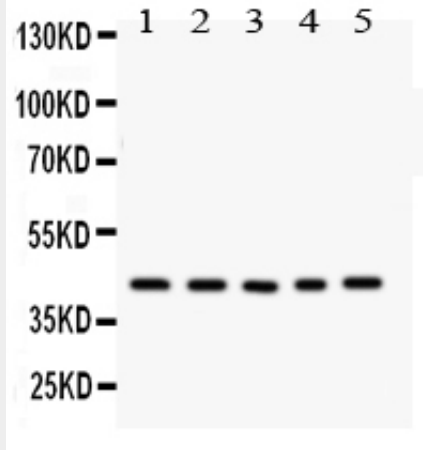
Anti-CYR61/CCN1 Antibody - Protocols

Provided below are standard protocols that you may find useful for product applications.

- [Western Blot](#)
- [Blocking Peptides](#)
- [Dot Blot](#)
- [Immunohistochemistry](#)
- [Immunofluorescence](#)
- [Immunoprecipitation](#)
- [Flow Cytometry](#)
- [Cell Culture](#)

Anti-CYR61/CCN1 Antibody - Images





Anti- CCN1 Picoband antibody, ABO12236, Western blotting All lanes: Anti CCN1 (ABO12236) at 0.5ug/ml Lane 1: Rat Thymus Tissue Lysate at 50ug Lane 2: Rat Skeletal Muscle Tissue Lysate at 50ug Lane 3: A431 Whole Cell Lysate at 40ug Lane 4: SGC Whole Cell Lysate at 40ug Lane 5: 22RV1 Whole Cell Lysate at 40ug Predicted bind size: 42KD Observed bind size: 42KD

Anti-CYR61/CCN1 Antibody - Background

Cysteine-rich angiogenic inducer 61 (CYR61) or CCN family member 1 (CCN1), is a matricellular protein that in humans is encoded by the CYR61 gene. CYR61 is a secreted, extracellular matrix (ECM)-associated signaling protein of the CCN family (CCN intercellular signaling protein). And it is capable of regulating a broad range of cellular activities, including cell adhesion, migration, proliferation, differentiation, apoptosis, and senescence through interaction with cell surface integrin receptors and heparan sulfate proteoglycans. During embryonic development, CYR61 is critical for cardiac septal morphogenesis, blood vessel formation in placenta, and vascular integrity. In adulthood CYR61 plays important roles in inflammation and tissue repair, and is associated with diseases related to chronic inflammation, including rheumatoid arthritis, atherosclerosis, diabetes-related nephropathy and retinopathy, and many different forms of cancers.