

Anti-SGCA Picoband Antibody
Catalog # ABO12191**Specification****Anti-SGCA Picoband Antibody - Product Information**

Application	WB
Primary Accession	Q16586
Host	Rabbit
Reactivity	Human, Mouse, Rat
Clonality	Polyclonal
Format	Lyophilized

Description

Rabbit IgG polyclonal antibody for Alpha-sarcoglycan(SGCA) detection. Tested with WB in Human;Mouse;Rat.

Reconstitution

Add 0.2ml of distilled water will yield a concentration of 500ug/ml.

Anti-SGCA Picoband Antibody - Additional Information

Gene ID 6442

Other Names

Alpha-sarcoglycan, Alpha-SG, 50 kDa dystrophin-associated glycoprotein, 50DAG, Adhalin, Dystroglycan-2, SGCA, ADL, DAG2

Calculated MW

42875 MW KDa

Application Details

Western blot, 0.1-0.5 µg/ml, Mouse, Rat, Human

Subcellular Localization

Cell membrane, sarcolemma ; Single-pass type I membrane protein . Cytoplasm, cytoskeleton .

Tissue Specificity

Most strongly expressed in skeletal muscle. Also expressed in cardiac muscle and, at much lower levels, in lung. In the fetus, most abundant in cardiac muscle and, at lower levels, in lung. Also detected in liver and kidney. Not expressed in brain.

Protein Name

Alpha-sarcoglycan

Contents

Each vial contains 5mg BSA, 0.9mg NaCl, 0.2mg Na₂HPO₄, 0.05mg Na₃.

Immunogen

E.coli-derived human SGCA recombinant protein (Position: Q24-H387). Human SGCA shares 90.7% amino acid (aa) sequence identity with mouse SGCA.

Purification

Immunogen affinity purified.

Cross Reactivity

No cross reactivity with other proteins

Storage

At -20°C for one year. After reconstitution, at 4°C for one month. It can also be aliquotted and stored frozen at -20°C for a longer time. Avoid repeated freezing and thawing.

Sequence Similarities

Belongs to the sarcoglycan alpha/epsilon family.

Anti-SGCA Picoband Antibody - Protein Information

Name SGCA

Synonyms ADL, DAG2

Function

Component of the sarcoglycan complex, a subcomplex of the dystrophin-glycoprotein complex which forms a link between the F-actin cytoskeleton and the extracellular matrix.

Cellular Location

Cell membrane, sarcolemma; Single-pass type I membrane protein. Cytoplasm, cytoskeleton

Tissue Location

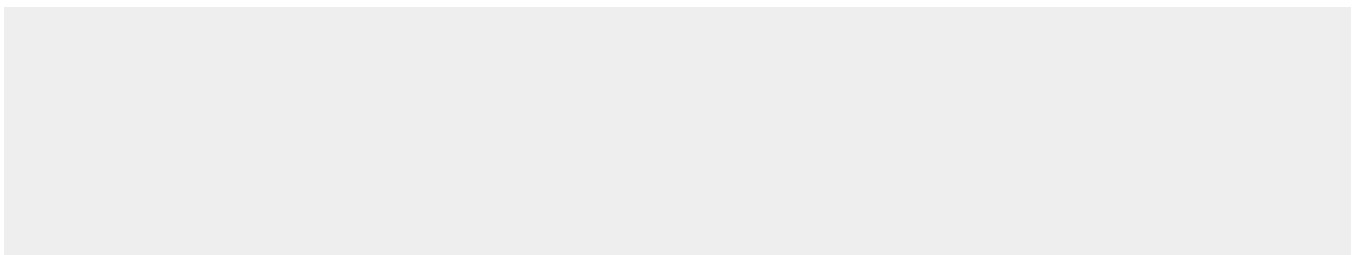
Most strongly expressed in skeletal muscle. Also expressed in cardiac muscle and, at much lower levels, in lung. In the fetus, most abundant in cardiac muscle and, at lower levels, in lung Also detected in liver and kidney. Not expressed in brain

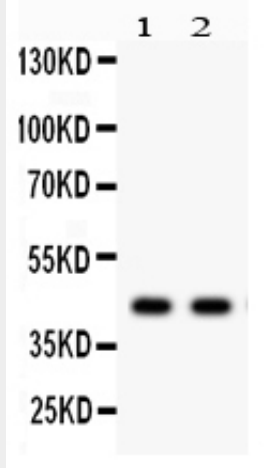
Anti-SGCA Picoband Antibody - Protocols

Provided below are standard protocols that you may find useful for product applications.

- [Western Blot](#)
- [Blocking Peptides](#)
- [Dot Blot](#)
- [Immunohistochemistry](#)
- [Immunofluorescence](#)
- [Immunoprecipitation](#)
- [Flow Cytometry](#)
- [Cell Culture](#)

Anti-SGCA Picoband Antibody - Images





Anti- SGCA Picoband antibody, ABO12191, Western blottingAll lanes: Anti SGCA (ABO12191) at 0.5ug/mlLane 1: Rat Skeletal Muscle Tissue Lysate at 50ugLane 2: Mouse Skeletal Muscle Tissue Lysate at 50ugPredicted bind size: 43KDObserved bind size: 43KD

Anti-SGCA Picoband Antibody - Background

Alpha-sarcoglycan is a protein that in humans is encoded by the SGCA gene. This gene encodes a component of the dystrophin-glycoprotein complex (DGC), which is critical to the stability of muscle fiber membranes and to the linking of the actin cytoskeleton to the extracellular matrix. Its expression is thought to be restricted to striated muscle. Mutations in this gene result in type 2D autosomal recessive limb-girdle muscular dystrophy. Multiple transcript variants encoding different isoforms have been found for this gene.