

**Anti-KIAA0652 Picoband Antibody**  
Catalog # ABO12168**Specification****Anti-KIAA0652 Picoband Antibody - Product Information**

Application	WB
Primary Accession	<a href="#">O75143</a>
Host	Rabbit
Reactivity	Human, Mouse
Clonality	Polyclonal
Format	Lyophilized

**Description**

Rabbit IgG polyclonal antibody for Autophagy-related protein 13(ATG13) detection. Tested with WB in Human;Mouse.

**Reconstitution**

Add 0.2ml of distilled water will yield a concentration of 500ug/ml.

**Anti-KIAA0652 Picoband Antibody - Additional Information**

**Gene ID** 9776

**Other Names**

Autophagy-related protein 13, ATG13, KIAA0652

**Calculated MW**

56572 MW KDa

**Application Details**

Western blot, 0.1-0.5 µg/ml, Human, Mouse<br>

**Subcellular Localization**

Cytoplasm, cytosol . Preautophagosomal structure . Under starvation conditions, is localized to punctate structures primarily representing the isolation membrane; the isolation membrane sequesters a portion of the cytoplasm resulting in autophagosome formation. .

**Protein Name**

Autophagy-related protein 13

**Contents**

Each vial contains 5mg BSA, 0.9mg NaCl, 0.2mg Na<sub>2</sub>HPO<sub>4</sub>, 0.05mg Na<sub>3</sub>.

**Immunogen**

A synthetic peptide corresponding to a sequence at the C-terminus of human KIAA0652 (488-517aa MAEDLDSLPEKLAVHEKNVREFDAFVETLQ), identical to the related mouse sequence.

**Purification**

Immunogen affinity purified.

**Cross Reactivity**

No cross reactivity with other proteins

**Storage**

**At -20°C for one year. After r°Constitution, at 4°C for one month. It°Can also be aliquotted and stored frozen at -20°C for a longer time.Avoid repeated freezing and thawing.**

**Sequence Similarities**

Belongs to the ATG13 metazoan family.

**Anti-KIAA0652 Picoband Antibody - Protein Information**

**Name** ATG13

**Synonyms** KIAA0652

**Function**

Autophagy factor required for autophagosome formation and mitophagy. Target of the TOR kinase signaling pathway that regulates autophagy through the control of the phosphorylation status of ATG13 and ULK1, and the regulation of the ATG13-ULK1-RB1CC1 complex. Through its regulation of ULK1 activity, plays a role in the regulation of the kinase activity of mTORC1 and cell proliferation.

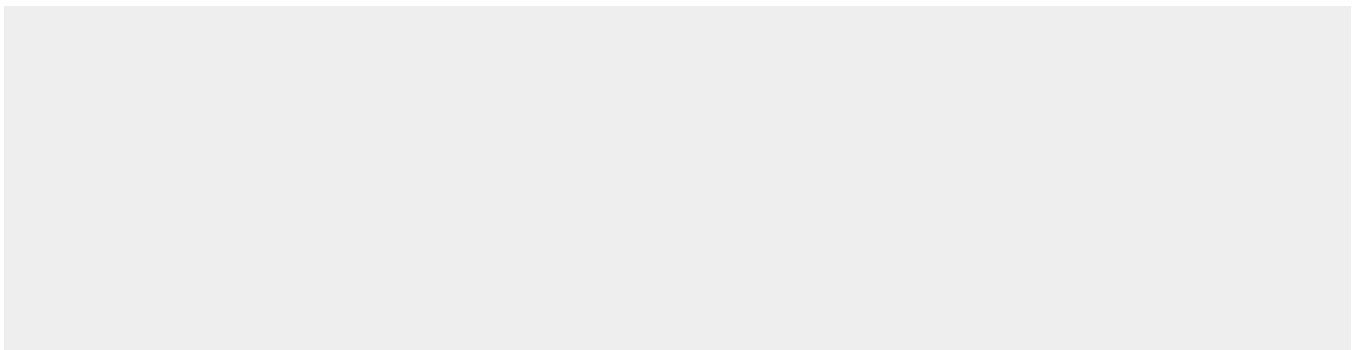
**Cellular Location**

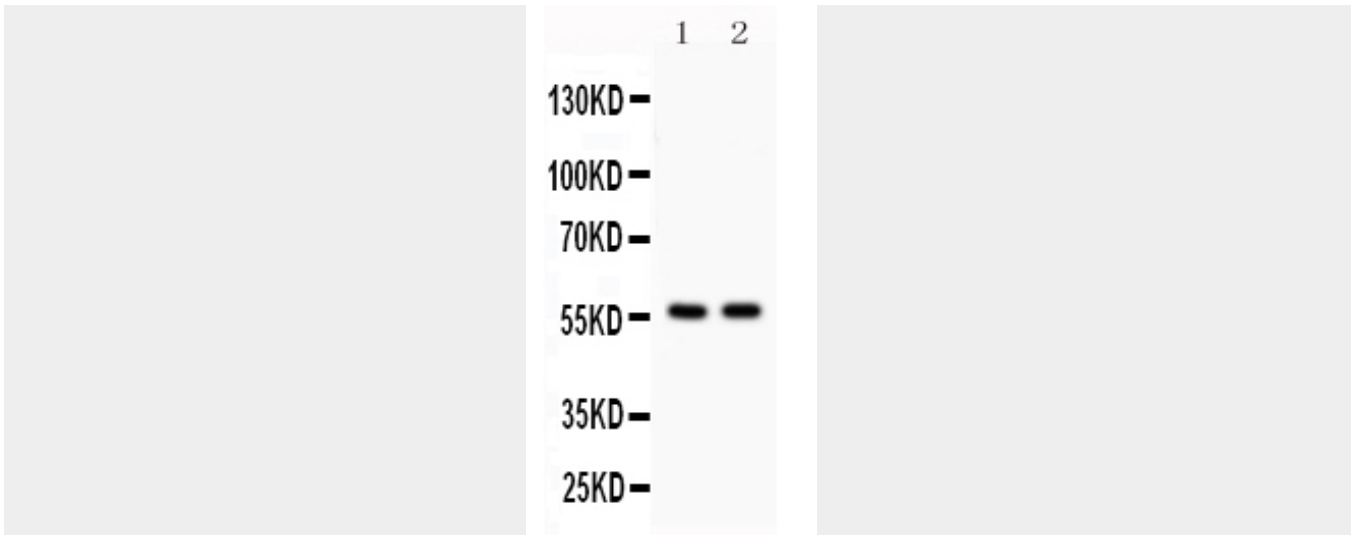
Cytoplasm, cytosol. Preautophagosomal structure. Note=Under starvation conditions, is localized to punctate structures primarily representing the isolation membrane; the isolation membrane sequesters a portion of the cytoplasm resulting in autophagosome formation

**Anti-KIAA0652 Picoband Antibody - Protocols**

Provided below are standard protocols that you may find useful for product applications.

- [Western Blot](#)
- [Blocking Peptides](#)
- [Dot Blot](#)
- [Immunohistochemistry](#)
- [Immunofluorescence](#)
- [Immunoprecipitation](#)
- [Flow Cytometry](#)
- [Cell Culture](#)

**Anti-KIAA0652 Picoband Antibody - Images**



Anti- KIAA0652 Picoband antibody, ABO12168, Western blottingAll lanes: Anti KIAA0652 (ABO12168) at 0.5ug/mlLane 1: HELA Whole Cell Lysate at 40ugLane 2: HEPA Whole Cell Lysate at 40ugPredicted bind size: 56KDObserved bind size: 56KD

#### **Anti-KIAA0652 Picoband Antibody - Background**

Autophagy-related protein 13, also known as ATG13, is a protein that in humans is encoded by the KIAA0652 gene. ATG13 is an autophagy factor required for phagosome formation. It is located on 11p11.2. And ATG13 is a target of the TOR kinase signaling pathway that regulates autophagy through phosphorylation of ATG13 and ULK1, and the regulation of the ATG13-ULK1-RB1CC1 complex.