

**Anti-Yes1 Picoband Antibody**  
Catalog # ABO12155**Specification****Anti-Yes1 Picoband Antibody - Product Information**

|                   |                        |
|-------------------|------------------------|
| Application       | <b>WB, IHC</b>         |
| Primary Accession | <a href="#">P07947</a> |
| Host              | <b>Rabbit</b>          |
| Reactivity        | <b>Human</b>           |
| Clonality         | <b>Polyclonal</b>      |
| Format            | <b>Lyophilized</b>     |

**Description**

Rabbit IgG polyclonal antibody for Tyrosine-protein kinase Yes(YES1) detection. Tested with WB, IHC-P in Human.

**Reconstitution**

Add 0.2ml of distilled water will yield a concentration of 500ug/ml.

**Anti-Yes1 Picoband Antibody - Additional Information**

**Gene ID** 7525

**Other Names**

Tyrosine-protein kinase Yes, 2.7.10.2, Proto-oncogene c-Yes, p61-Yes, YES1, YES

**Calculated MW**

60801 MW KDa

**Application Details**

Immunohistochemistry(Paraffin-embedded Section), 0.5-1 µg/ml, Human, By Heat<br>Western blot, 0.1-0.5 µg/ml, Human<br>

**Subcellular Localization**

Cell membrane. Cytoplasm, cytoskeleton, microtubule organizing center, centrosome. Cytoplasm, cytosol. Newly synthesized protein initially accumulates in the Golgi region and traffics to the plasma membrane through the exocytic pathway.

**Tissue Specificity**

Expressed in the epithelial cells of renal proximal tubules and stomach as well as hematopoietic cells in the bone marrow and spleen in the fetal tissues. In adult, expressed in epithelial cells of the renal proximal tubules and present in keratinocytes in the basal epidermal layer of epidermis. .

**Protein Name**

Tyrosine-protein kinase Yes

**Contents**

Each vial contains 5mg BSA, 0.9mg NaCl, 0.2mg Na<sub>2</sub>HPO<sub>4</sub>, 0.05mg Na<sub>3</sub>.

**Immunogen**

A synthetic peptide corresponding to a sequence at the N-terminus of human Yes1 (7-35aa KENKSPAIKYRPENTPEPVSTSVSHYGAE), different from the related mouse sequence by six amino acids, and from the related rat sequence by seven amino acids.

#### **Purification**

Immunogen affinity purified.

#### **Cross Reactivity**

No cross reactivity with other proteins

#### **Storage**

**At -20°C for one year. After r°Constitution, at 4°C for one month. It°Can also be aliquotted and stored frozen at -20°C for a longer time.Avoid repeated freezing and thawing.**

#### **Sequence Similarities**

Belongs to the protein kinase superfamily. Tyr protein kinase family. SRC subfamily.

### **Anti-Yes1 Picoband Antibody - Protein Information**

**Name** YES1

**Synonyms** YES

#### **Function**

Non-receptor protein tyrosine kinase that is involved in the regulation of cell growth and survival, apoptosis, cell-cell adhesion, cytoskeleton remodeling, and differentiation. Stimulation by receptor tyrosine kinases (RTKs) including EGFR, PDGFR, CSF1R and FGFR leads to recruitment of YES1 to the phosphorylated receptor, and activation and phosphorylation of downstream substrates. Upon EGFR activation, promotes the phosphorylation of PARD3 to favor epithelial tight junction assembly. Participates in the phosphorylation of specific junctional components such as CTNND1 by stimulating the FYN and FER tyrosine kinases at cell-cell contacts. Upon T-cell stimulation by CXCL12, phosphorylates collapsin response mediator protein 2/DPYSL2 and induces T-cell migration. Participates in CD95L/FASLG signaling pathway and mediates AKT-mediated cell migration. Plays a role in cell cycle progression by phosphorylating the cyclin-dependent kinase 4/CDK4 thus regulating the G1 phase. Also involved in G2/M progression and cytokinesis. Catalyzes phosphorylation of organic cation transporter OCT2 which induces its transport activity (PubMed:<a href="http://www.uniprot.org/citations/26979622" target="\_blank">26979622</a>).

#### **Cellular Location**

Cell membrane. Cytoplasm, cytoskeleton, microtubule organizing center, centrosome. Cytoplasm, cytosol. Cell junction {ECO:0000250|UniProtKB:Q28923}. Note=Newly synthesized protein initially accumulates in the Golgi region and traffics to the plasma membrane through the exocytic pathway. Localized to small puncta throughout the cytoplasm and cell membrane when in the presence of SNAIL1 (By similarity). {ECO:0000250|UniProtKB:Q28923}

#### **Tissue Location**

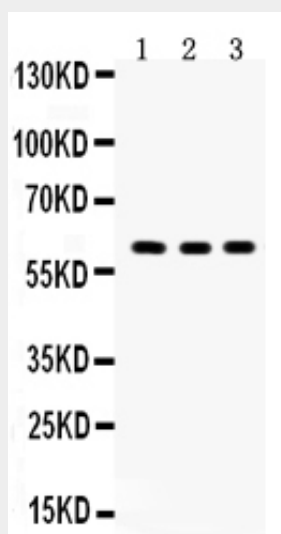
Expressed in the epithelial cells of renal proximal tubules and stomach as well as hematopoietic cells in the bone marrow and spleen in the fetal tissues. In adult, expressed in epithelial cells of the renal proximal tubules and present in keratinocytes in the basal epidermal layer of epidermis.

### **Anti-Yes1 Picoband Antibody - Protocols**

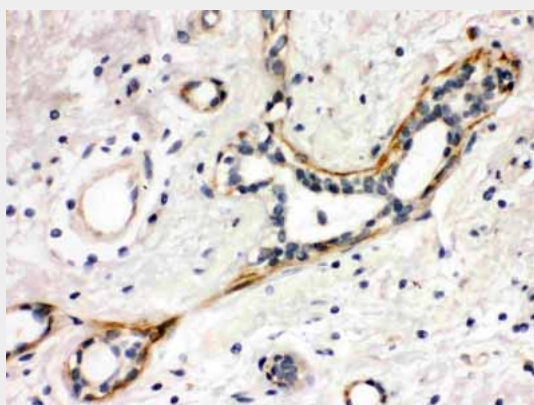
Provided below are standard protocols that you may find useful for product applications.

- [Western Blot](#)
- [Blocking Peptides](#)
- [Dot Blot](#)
- [Immunohistochemistry](#)
- [Immunofluorescence](#)
- [Immunoprecipitation](#)
- [Flow Cytometry](#)
- [Cell Culture](#)

#### Anti-Yes1 Picoband Antibody - Images



Anti- YES1 Picoband antibody, ABO12155, Western blotting All lanes: Anti YES1 (ABO12155) at 0.5ug/ml Lane 1: SGC Whole Cell Lysate at 40ug Lane 2: A549 Whole Cell Lysate at 40ug Lane 3: HEPG2 Whole Cell Lysate at 40ug Predicted bind size: 61KD Observed bind size: 61KD



Anti- YES1 Picoband antibody, ABO12155, IHC(P) IHC(P): Human Mammary Cancer Tissue

#### Anti-Yes1 Picoband Antibody - Background

Proto-oncogene tyrosine-protein kinase Yes is an enzyme that in humans is encoded by the YES1 gene. This gene is the cellular homolog of the Yamaguchi sarcoma virus oncogene. The encoded protein has tyrosine kinase activity and belongs to the src family of proteins. This gene lies in close proximity to thymidylate synthase gene on chromosome 18, and a corresponding pseudogene has been found on chromosome 22. YES1 has been shown to interact with Janus kinase 2, CTNND1,

RPL10 and Occludin.