

**Anti-Prolactin Picoband Antibody**  
Catalog # ABO12052**Specification**

---

**Anti-Prolactin Picoband Antibody - Product Information**

Application	<b>WB</b>
Primary Accession	<a href="#">P01236</a>
Host	<b>Rabbit</b>
Reactivity	<b>Human</b>
Clonality	<b>Polyclonal</b>
Format	<b>Lyophilized</b>

**Description**

Rabbit IgG polyclonal antibody for Prolactin(PRL) detection. Tested with WB, ELISA in Human.

**Reconstitution**

Add 0.2ml of distilled water will yield a concentration of 500ug/ml.

**Anti-Prolactin Picoband Antibody - Additional Information**

**Gene ID** 5617

**Other Names**

Prolactin, PRL, PRL

**Calculated MW**

25876 MW KDa

**Application Details**

Western blot, 0.1-0.5 µg/ml, Human, -<br>ELISA , 0.1-0.5 µg/ml, Human<br>

**Subcellular Localization**

Secreted.

**Protein Name**

Prolactin

**Contents**

Each vial contains 5mg BSA, 0.9mg NaCl, 0.2mg Na<sub>2</sub>HPO<sub>4</sub>, 0.05mg Na<sub>3</sub>N.

**Immunogen**

E.coli-derived human Prolactin recombinant protein (Position: L29-227C). Human Prolactin shares 60% and 63% amino acid sequence identity with mouse and rat Prolactin, respectively.

**Purification**

Immunogen affinity purified.

**Cross Reactivity**

No cross reactivity with other proteins.

## Storage

At -20°C for one year. After reconstitution, at 4°C for one month. It can also be aliquotted and stored frozen at -20°C for a longer time. Avoid repeated freezing and thawing.

## Sequence Similarities

Belongs to the somatotropin/prolactin family.

## Anti-Prolactin Picoband Antibody - Protein Information

**Name** PRL

### Function

Prolactin acts primarily on the mammary gland by promoting lactation.

### Cellular Location

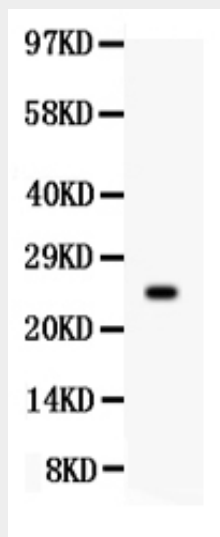
Secreted.

## Anti-Prolactin Picoband Antibody - Protocols

Provided below are standard protocols that you may find useful for product applications.

- [Western Blot](#)
- [Blocking Peptides](#)
- [Dot Blot](#)
- [Immunohistochemistry](#)
- [Immunofluorescence](#)
- [Immunoprecipitation](#)
- [Flow Cytometry](#)
- [Cell Culture](#)

## Anti-Prolactin Picoband Antibody - Images



Anti- Prolactin Picoband antibody, PB361, Western blotting All lanes: Anti Prolactin (ABO12052) at 0.5ug/ml WB: MCF-7 Whole Cell Lysate at 40ug Predicted bind size: 25KD Observed bind size: 25KD

## **Anti-Prolactin Picoband Antibody - Background**

Prolactin (PRL), also known as luteotropic hormone or luteotropin, is a protein that in humans is best known for its role in enabling female mammals to produce milk. This gene encodes the anterior pituitary hormone prolactin. This secreted hormone is a growth regulator for many tissues, including cells of the immune system. It may also play a role in cell survival by suppressing apoptosis, and it is essential for lactation. Alternative splicing results in multiple transcript variants that encode the same protein.