

**Anti-Cytochrome C Picoband Antibody**  
Catalog # ABO12025**Specification**

---

**Anti-Cytochrome C Picoband Antibody - Product Information**

Application	WB, IHC, ICC
Primary Accession	<a href="#">P99999</a>
Host	Rabbit
Reactivity	Human, Mouse, Rat
Clonality	Polyclonal
Format	Lyophilized

**Description**

Rabbit IgG polyclonal antibody for Cytochrome c(CYCS) detection. Tested with WB, IHC-P, ICC in Human;Mouse;Rat.

**Reconstitution**

Add 0.2ml of distilled water will yield a concentration of 500ug/ml.

**Anti-Cytochrome C Picoband Antibody - Additional Information**

**Gene ID** 54205

**Other Names**

Cytochrome c, CYCS, CYC

**Calculated MW**

11749 MW KDa

**Application Details**

Immunocytochemistry , 0.5-1 µg/ml, Human, -<br>Immunohistochemistry(Paraffin-embedded Section), 0.5-1 µg/ml, Human, Mouse, Rat, By Heat<br>Western blot, 0.1-0.5 µg/ml, Human, Mouse, Rat<br>

**Subcellular Localization**

Mitochondrion intermembrane space. Loosely associated with the inner membrane.

**Protein Name**

Cytochrome c

**Contents**

Each vial contains 5mg BSA, 0.9mg NaCl, 0.2mg Na<sub>2</sub>HPO<sub>4</sub>, 0.05mg NaN<sub>3</sub>.

**Immunogen**

E.coli-derived human Cytochrome C recombinant protein (Position: G2-E105). Human Cytochrome C shares 91% amino acid (aa) sequence identity with both mouse and rat Cytochrome C.

**Purification**

Immunogen affinity purified.

### Cross Reactivity

No cross reactivity with other proteins

### Storage

At -20°C for one year. After reconstitution, at 4°C for one month. It can also be aliquotted and stored frozen at -20°C for a longer time. Avoid repeated freezing and thawing.

### Sequence Similarities

Belongs to the cytochrome c family.

## Anti-Cytochrome C Picoband Antibody - Protein Information

**Name** CYCS

**Synonyms** CYC

### Function

Electron carrier protein. The oxidized form of the cytochrome c heme group can accept an electron from the heme group of the cytochrome c1 subunit of cytochrome reductase. Cytochrome c then transfers this electron to the cytochrome oxidase complex, the final protein carrier in the mitochondrial electron-transport chain.

### Cellular Location

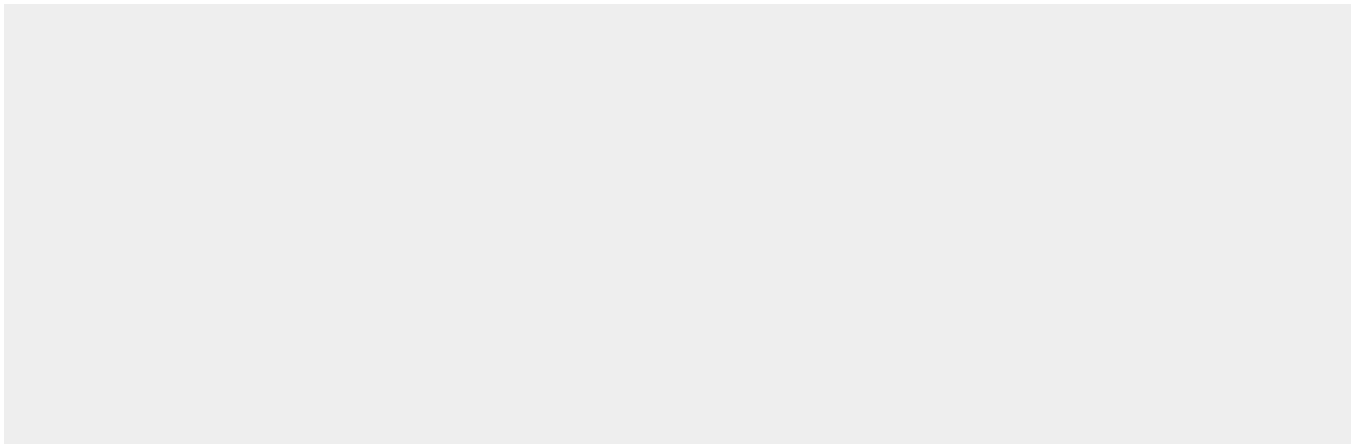
Mitochondrion intermembrane space. Note=Loosely associated with the inner membrane

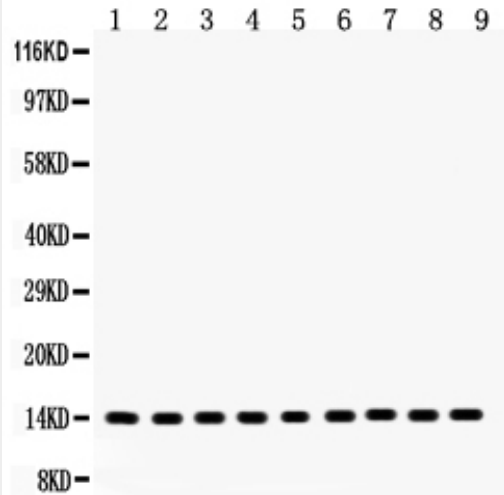
## Anti-Cytochrome C Picoband Antibody - Protocols

Provided below are standard protocols that you may find useful for product applications.

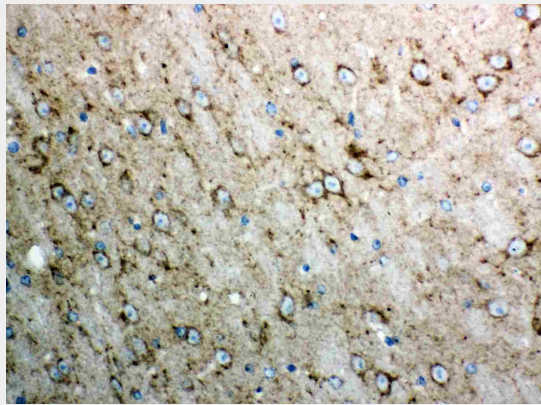
- [Western Blot](#)
- [Blocking Peptides](#)
- [Dot Blot](#)
- [Immunohistochemistry](#)
- [Immunofluorescence](#)
- [Immunoprecipitation](#)
- [Flow Cytometry](#)
- [Cell Culture](#)

## Anti-Cytochrome C Picoband Antibody - Images

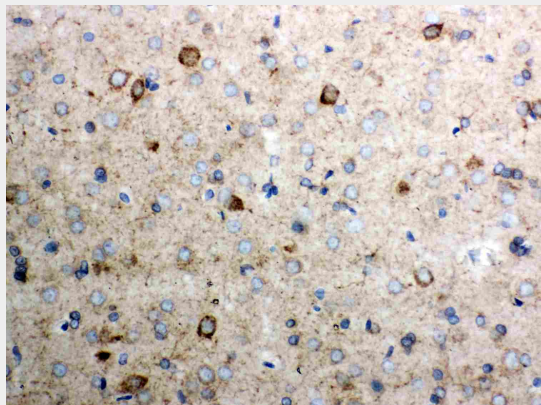




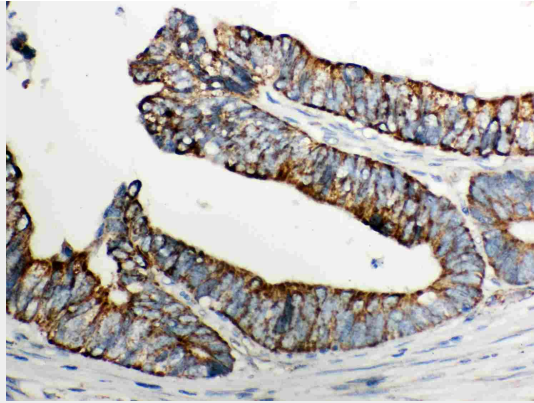
Anti- Cytochrome C Picoband antibody, ABO12025, Western blotting All lanes: Anti Cytochrome C (ABO12025) at 0.5ug/ml Lane 1: Rat Brain Tissue Lysate at 50ug Lane 2: Mouse Brain Tissue Lysate at 50ug Lane 3: Rat Cardiac Muscle Tissue Lysate at 50ug Lane 4: Mouse Cardiac Muscle Tissue Lysate at 50ug Lane 5: U87 Whole Cell Lysate at 40ug Lane 6: NEURO Whole Cell Lysate at 40ug Lane 7: HELA Whole Cell Lysate at 40ug Lane 8: JURKAT Whole Cell Lysate at 40ug Lane 9: Human Placenta Tissue Lysate at 50ug Predicted bind size: 14KD Observed bind size: 14KD



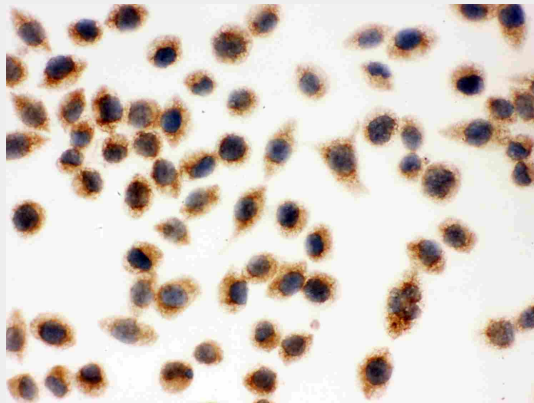
Anti- Cytochrome C Picoband antibody, ABO12025, IHC(P) IHC(P): Mouse Brain Tissue



Anti- Cytochrome C Picoband antibody, ABO12025, IHC(P) IHC(P): Rat Brain Tissue



Anti- Cytochrome C Picoband antibody, ABO12025, IHC(P)IHC(P): Human Intestinal Cancer Tissue



Anti- Cytochrome C Picoband antibody, ABO12025, ICCICC: SMMC-7721

#### **Anti-Cytochrome C Picoband Antibody - Background**

CYCS is also known as CYC, HCS or THC4. This gene encodes a small heme protein that functions as a central component of the electron transport chain in mitochondria. The encoded protein associates with the inner membrane of the mitochondrion where it accepts electrons from cytochrome b and transfers them to the cytochrome oxidase complex. This protein is also involved in initiation of apoptosis. Mutations in this gene are associated with autosomal dominant nonsyndromic thrombocytopenia. Numerous processed pseudogenes of this gene are found throughout the human genome.