

Anti-Neuropeptide Y Picoband Antibody
Catalog # ABO11987**Specification****Anti-Neuropeptide Y Picoband Antibody - Product Information**

Application	WB, IHC
Primary Accession	P01303
Host	Rabbit
Reactivity	Human, Mouse, Rat
Clonality	Polyclonal
Format	Lyophilized

Description

Rabbit IgG polyclonal antibody for Pro-neuropeptide Y(NPY) detection. Tested with WB, IHC-P in Human;Mouse;Rat.

Reconstitution

Add 0.2ml of distilled water will yield a concentration of 500ug/ml.

Anti-Neuropeptide Y Picoband Antibody - Additional Information

Gene ID 4852

Other Names

Pro-neuropeptide Y, Neuropeptide Y, Neuropeptide tyrosine, NPY, C-flanking peptide of NPY, CPON, NPY

Calculated MW

10851 MW KDa

Application Details

Immunohistochemistry(Paraffin-embedded Section), 0.5-1 µg/ml, Mouse, Rat, Human, By Heat
Western blot, 0.1-0.5 µg/ml, Human

Subcellular Localization

Secreted.

Tissue Specificity

One of the most abundant peptides in the nervous system. Also found in some chromaffin cells of the adrenal medulla.

Protein Name

Pro-neuropeptide Y

Contents

Each vial contains 5mg BSA, 0.9mg NaCl, 0.2mg Na₂HPO₄, 0.05mg Na₃N.

Immunogen

A synthetic peptide corresponding to a sequence in the middle region of human Neuropeptide Y (29-64aa YPSKPDNPGEDAPAEDMARYYSALRHYYINLITRQRY), identical to the related mouse and rat

sequences.

Purification

Immunogen affinity purified.

Cross Reactivity

No cross reactivity with other proteins

Storage

At -20°C for one year. After reconstitution, at 4°C for one month. It can also be aliquotted and stored frozen at -20°C for a longer time. Avoid repeated freezing and thawing.

Sequence Similarities

Belongs to the NPY family.

Anti-Neuropeptide Y Picoband Antibody - Protein Information

Name NPY

Function

NPY is implicated in the control of feeding and in secretion of gonadotrophin-release hormone.

Cellular Location

Secreted. Cytoplasmic vesicle, secretory vesicle, neuronal dense core vesicle
{ECO:0000250|UniProtKB:P07808}

Tissue Location

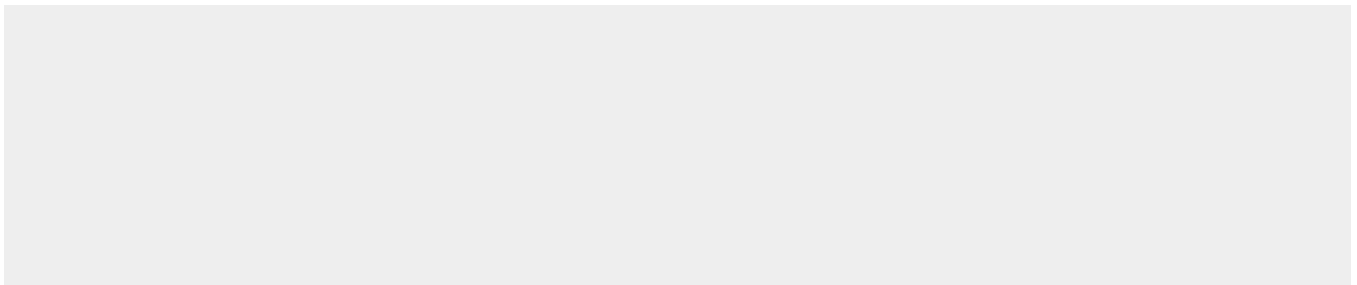
One of the most abundant peptides in the nervous system. Also found in some chromaffin cells of the adrenal medulla

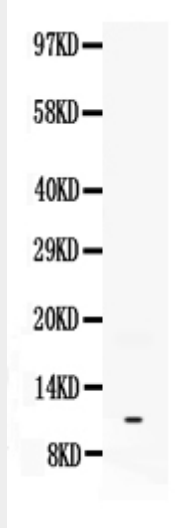
Anti-Neuropeptide Y Picoband Antibody - Protocols

Provided below are standard protocols that you may find useful for product applications.

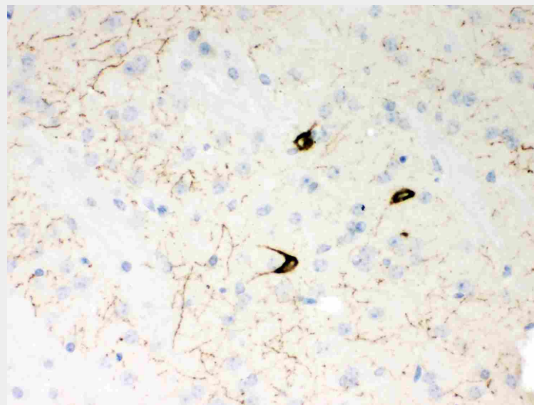
- [Western Blot](#)
- [Blocking Peptides](#)
- [Dot Blot](#)
- [Immunohistochemistry](#)
- [Immunofluorescence](#)
- [Immunoprecipitation](#)
- [Flow Cytometry](#)
- [Cell Culture](#)

Anti-Neuropeptide Y Picoband Antibody - Images

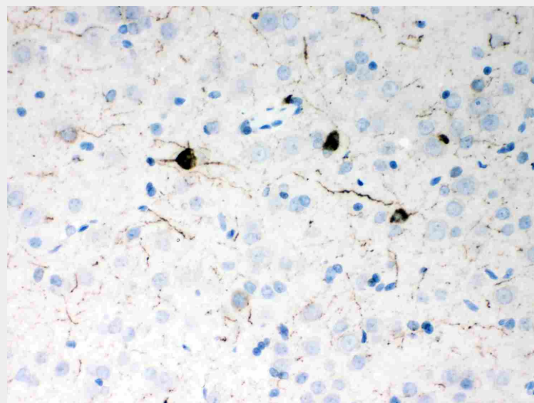




All lanes: Anti Neuropeptide Y (ABO11987) at 0.5ug/mlWB: Recombinant Human Neuropeptide Y Protein 0.5ng
Predicted bind size: 11KD
Observed bind size: 11KD



Anti- Neuropeptide Y Picoband antibody, ABO11987,IHC(P)IHC(P): Mouse Brain Tissue



Anti- Neuropeptide Y Picoband antibody, ABO11987,IHC(P)IHC(P): Rat Brain Tissue

Anti-Neuropeptide Y Picoband Antibody - Background

This gene encodes a neuropeptide that is widely expressed in the central nervous system and influences many physiological processes, including cortical excitability, stress response, food intake, circadian rhythms, and cardiovascular function. The neuropeptide functions through G protein-coupled receptors to inhibit adenylyl cyclase, activate mitogen-activated protein kinase (MAPK), regulate intracellular calcium levels, and activate potassium channels. A polymorphism in

this gene resulting in a change of leucine 7 to proline in the signal peptide is associated with elevated cholesterol levels, higher alcohol consumption, and may be a risk factor for various metabolic and cardiovascular diseases. The protein also exhibits antimicrobial activity against bacteria and fungi.