

Anti-Mesothelin Picoband Antibody
Catalog # ABO11978**Specification****Anti-Mesothelin Picoband Antibody - Product Information**

Application	WB, IHC
Primary Accession	O13421
Host	Rabbit
Reactivity	Human
Clonality	Polyclonal
Format	Lyophilized

Description

Rabbit IgG polyclonal antibody for Mesothelin(MSLN) detection. Tested with WB, IHC-P, ELISA in Human.

Reconstitution

Add 0.2ml of distilled water will yield a concentration of 500ug/ml.

Anti-Mesothelin Picoband Antibody - Additional Information

Gene ID 10232

Other Names

Mesothelin, CAK1 antigen, Pre-pro-megakaryocyte-potentiating factor, Megakaryocyte-potentiating factor, MPF, Mesothelin, cleaved form, MSLN, MPF

Calculated MW

68986 MW KDa

Application Details

ELISA , 0.1-0.5 µg/ml, Human, -
Immunohistochemistry(Paraffin-embedded Section), 0.5-1 µg/ml, Human, By Heat
Western blot, 0.1-0.5 µg/ml, Human

Subcellular Localization

Cell membrane; Lipid-anchor, GPI-anchor. Golgi apparatus.

Tissue Specificity

Expressed in lung. Expressed at low levels in heart, placenta and kidney. Expressed in mesothelial cells. Highly expressed in mesotheliomas, ovarian cancers, and some squamous cell carcinomas (at protein level). .

Protein Name

Mesothelin

Contents

Each vial contains 5mg BSA, 0.9mg NaCl, 0.2mg Na₂HPO₄, 0.05mg Na₃.

Immunogen

E.coli-derived human Mesothelin recombinant protein (Position: K306-L576). Human Mesothelin

shares 57% and 56% amino acid (aa) sequence identity with mouse and rat Mesothelin, respectively.

Purification

Immunogen affinity purified.

Cross Reactivity

No cross reactivity with other proteins

Storage

At -20°C for one year. After reconstitution, at 4°C for one month. It can also be aliquotted and stored frozen at -20°C for a longer time. Avoid repeated freezing and thawing.

Anti-Mesothelin Picoband Antibody - Protein Information

Name MSLN

Synonyms MPF

Function

Membrane-anchored forms may play a role in cellular adhesion.

Cellular Location

Cell membrane; Lipid-anchor, GPI-anchor. Golgi apparatus [Isoform 3]: Secreted.

Tissue Location

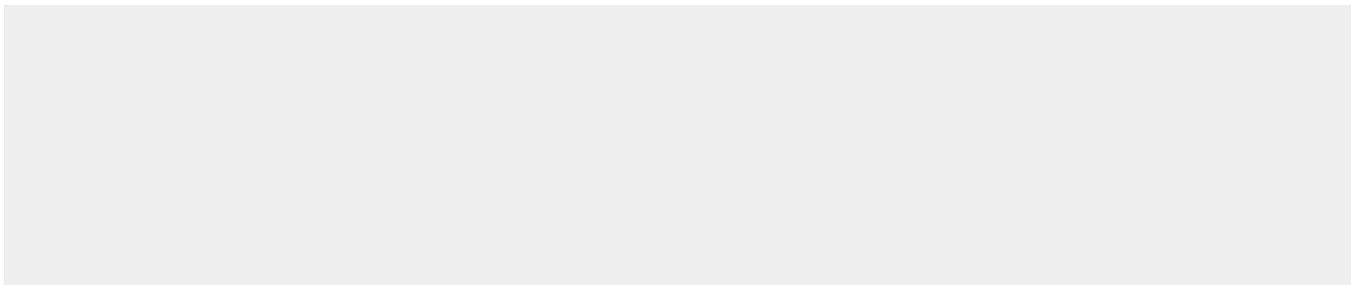
Expressed in lung. Expressed at low levels in heart, placenta and kidney. Expressed in mesothelial cells. Highly expressed in mesotheliomas, ovarian cancers, and some squamous cell carcinomas (at protein level).

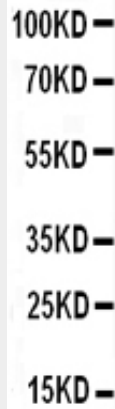
Anti-Mesothelin Picoband Antibody - Protocols

Provided below are standard protocols that you may find useful for product applications.

- [Western Blot](#)
- [Blocking Peptides](#)
- [Dot Blot](#)
- [Immunohistochemistry](#)
- [Immunofluorescence](#)
- [Immunoprecipitation](#)
- [Flow Cytometry](#)
- [Cell Culture](#)

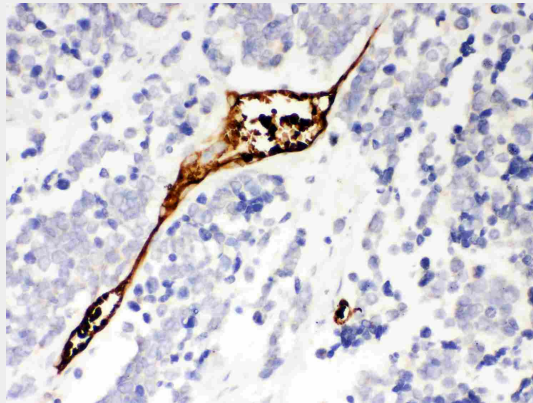
Anti-Mesothelin Picoband Antibody - Images





100KD—
70KD—
55KD—
35KD—
25KD—
15KD—

Anti- Mesothelin Picoband antibody, ABO11978, Western blotting All lanes: Anti Mesothelin (ABO11978) at 0.5ug/ml WB: Recombinant Human Mesothelin Protein 0.5ng Predicted bind size: 43KD Observed bind size: 43KD



Anti- Mesothelin Picoband antibody, ABO11978, IHC(P) IHC(P): Human Lung Cancer Tissue

Anti-Mesothelin Picoband Antibody - Background

Mesothelin, also known as MSLN or MPF is a protein that in humans is encoded by the MSLN gene. This gene is mapped to 16p13.3. This gene encodes a precursor protein that is cleaved into two products, megakaryocyte potentiating factor and mesothelin. Megakaryocyte potentiation factor functions as a cytokine that can stimulate colony formation in bone marrow megakaryocytes. Mesothelin is a glycosylphosphatidylinositol-anchored cell-surface protein that may function as a cell adhesion protein. This protein is overexpressed in epithelial mesotheliomas, ovarian cancers and in specific squamous cell carcinomas.