

**Anti-Kallikrein 4 Picoband Antibody**  
Catalog # ABO11951**Specification**

---

**Anti-Kallikrein 4 Picoband Antibody - Product Information**

Application	WB
Primary Accession	<a href="#">Q9Y5K2</a>
Host	Rabbit
Reactivity	Human
Clonality	Polyclonal
Format	Lyophilized

**Description**

Rabbit IgG polyclonal antibody for Kallikrein-4(KLK4) detection. Tested with WB in Human.

**Reconstitution**

Add 0.2ml of distilled water will yield a concentration of 500ug/ml.

**Anti-Kallikrein 4 Picoband Antibody - Additional Information**

**Gene ID** 9622

**Other Names**

Kallikrein-4, 3.4.21.-, Enamel matrix serine proteinase 1, Kallikrein-like protein 1, KLK-L1, Prostase, Serine protease 17, KLK4, EMSP1, PRSS17, PSTS

**Calculated MW**

27032 MW KDa

**Application Details**

Western blot, 0.1-0.5 µg/ml, Human<br>

**Subcellular Localization**

Secreted.

**Tissue Specificity**

Expressed in prostate.

**Protein Name**

Kallikrein-4

**Contents**

Each vial contains 5mg BSA, 0.9mg NaCl, 0.2mg Na<sub>2</sub>HPO<sub>4</sub>, 0.05mg Na<sub>3</sub>.

**Immunogen**

E.coli-derived human Kallikrein 4 recombinant protein (Position: I31-S254).

**Purification**

Immunogen affinity purified.

### Cross Reactivity

No cross reactivity with other proteins

### Storage

At -20°C for one year. After reconstitution, at 4°C for one month. It can also be aliquotted and stored frozen at -20°C for a longer time. Avoid repeated freezing and thawing.

### Sequence Similarities

Belongs to the peptidase S1 family. Kallikrein subfamily.

## Anti-Kallikrein 4 Picoband Antibody - Protein Information

**Name** KLK4

**Synonyms** EMSP1, PRSS17, PSTS

### Function

Has a major role in enamel formation (PubMed: [15235027](http://www.uniprot.org/citations/15235027)). Required during the maturation stage of tooth development for clearance of enamel proteins and normal structural patterning of the crystalline matrix (By similarity).

### Cellular Location

Secreted.

### Tissue Location

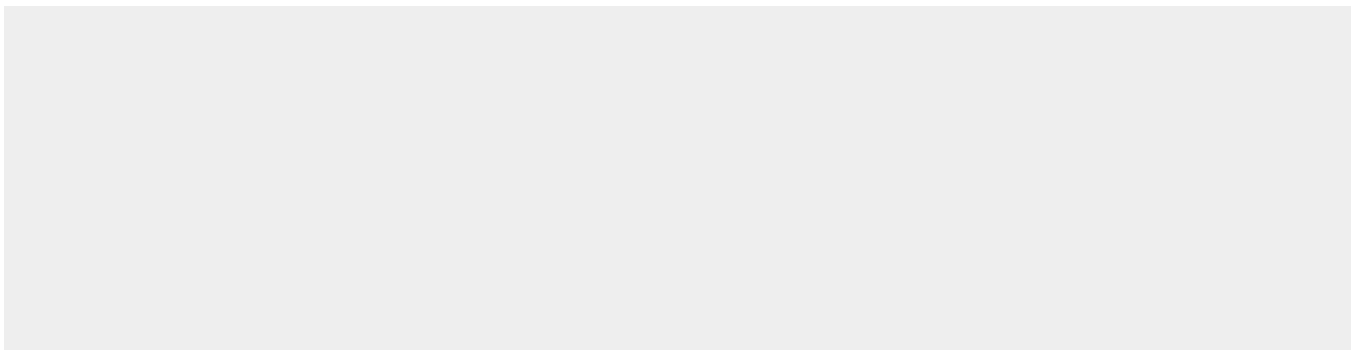
Expressed in prostate.

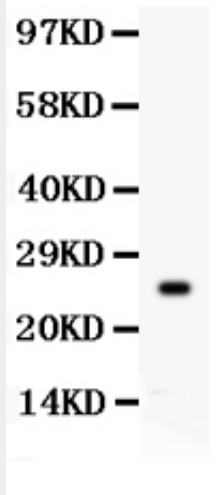
## Anti-Kallikrein 4 Picoband Antibody - Protocols

Provided below are standard protocols that you may find useful for product applications.

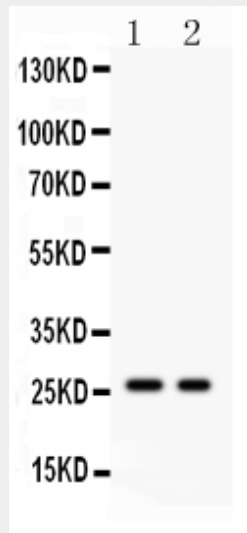
- [Western Blot](#)
- [Blocking Peptides](#)
- [Dot Blot](#)
- [Immunohistochemistry](#)
- [Immunofluorescence](#)
- [Immunoprecipitation](#)
- [Flow Cytometry](#)
- [Cell Culture](#)

## Anti-Kallikrein 4 Picoband Antibody - Images





Anti- Picoband antibody, PB, Western blotting All lanes: Anti Kallikrein 4 (ABO11951) at 0.5ug/ml WB: Recombinant Human Kallikrein 4 Protein 0.5ng Predicted bind size: 25KD Observed bind size: 25KD



Anti- Picoband antibody, PB, Western blotting All lanes: Anti Kallikrein 4 (ABO11951) at 0.5ug/ml Lane 1: 293T Whole Cell Lysate at 40ug Lane 2: MCF-7 Whole Cell Lysate at 40ug Predicted bind size: 27KD Observed bind size: 27KD

### Anti-Kallikrein 4 Picoband Antibody - Background

Kallikrein-related peptidase 4, also known as PSTS or EMSP1, is a protein which in humans is encoded by the KLK4 gene. This gene is one of the fifteen kallikrein subfamily members located in a cluster on chromosome 19. Kallikreins are a subgroup of serine proteases having diverse physiological functions. Growing evidence suggests that many kallikreins are implicated in carcinogenesis and some have potential as novel cancer and other disease biomarkers. In particular, they may serve as biomarkers for both prostate cancer and breast cancer. It has been found that KLK4 is a proliferative factor with effects on gene expression and it may have a role in prostate cancer development and progression.