

Anti-IRS1 Picoband Antibody
Catalog # ABO11914**Specification****Anti-IRS1 Picoband Antibody - Product Information**

Application	WB, IHC
Primary Accession	P35568
Host	Rabbit
Reactivity	Human, Mouse, Rat
Clonality	Polyclonal
Format	Lyophilized

Description

Rabbit IgG polyclonal antibody for Insulin receptor substrate 1(IRS1) detection. Tested with WB, IHC-P in Human;Mouse;Rat.

Reconstitution

Add 0.2ml of distilled water will yield a concentration of 500ug/ml.

Anti-IRS1 Picoband Antibody - Additional Information

Gene ID 3667

Other Names

Insulin receptor substrate 1, IRS-1, IRS1

Calculated MW

131591 MW KDa

Application Details

Immunohistochemistry(Paraffin-embedded Section), 0.5-1 µg/ml, Human, Mouse, Rat, By Heat
Western blot, 0.1-0.5 µg/ml, Human

Protein Name

Insulin receptor substrate 1

Contents

Each vial contains 5mg BSA, 0.9mg NaCl, 0.2mg Na₂HPO₄, 0.05mg Na₃.

Immunogen

E.coli-derived human IRS1 recombinant protein (Position: S1041-Q1242). Human IRS1 shares 78% and 80% amino acid (aa) sequences identity with mouse and rat IRS1, respectively.

Purification

Immunogen affinity purified.

Cross Reactivity

No cross reactivity with other proteins

Storage

At -20°C for one year. After r° Constitution,

at 4°C for one month. It can also be aliquotted and stored frozen at -20°C for a longer time. Avoid repeated freezing and thawing.

Sequence Similarities

Contains 1 IRS-type PTB domain.

Anti-IRS1 Picoband Antibody - Protein Information

Name IRS1

Function

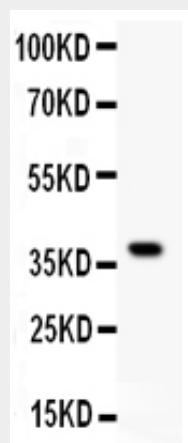
May mediate the control of various cellular processes by insulin. When phosphorylated by the insulin receptor binds specifically to various cellular proteins containing SH2 domains such as phosphatidylinositol 3-kinase p85 subunit or GRB2. Activates phosphatidylinositol 3-kinase when bound to the regulatory p85 subunit (By similarity).

Anti-IRS1 Picoband Antibody - Protocols

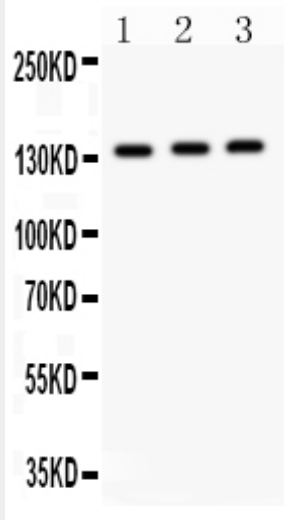
Provided below are standard protocols that you may find useful for product applications.

- [Western Blot](#)
- [Blocking Peptides](#)
- [Dot Blot](#)
- [Immunohistochemistry](#)
- [Immunofluorescence](#)
- [Immunoprecipitation](#)
- [Flow Cytometry](#)
- [Cell Culture](#)

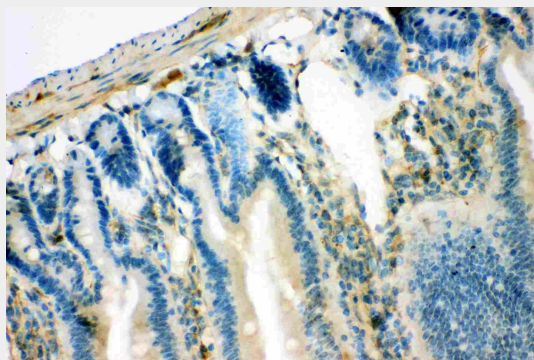
Anti-IRS1 Picoband Antibody - Images



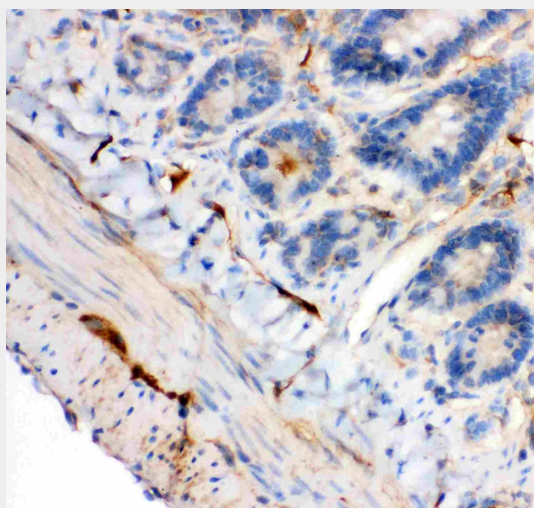
Anti- IRS1 antibody, ABO11914, Western blotting All lanes: Anti IRS1 (ABO11914) at 0.5ug/mlWB: Recombinant Human IRS1 Protein 0.5ng Predicted bind size: 39KD Observed bind size: 39KD



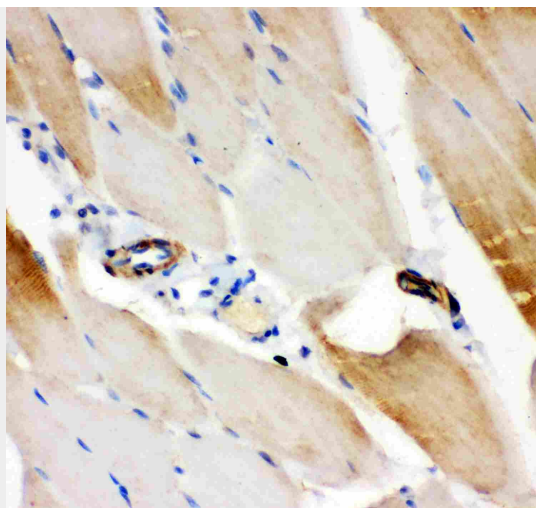
Anti- IRS1 antibody, ABO11914, Western blottingAll lanes: Anti IRS1 (ABO11914) at 0.5ug/mlLane 1: A549 Whole Cell Lysate at 40ugLane 2: MM453 Whole Cell Lysate at 40ugLane 3: JURKAT Whole Cell Lysate at 40ugPredicted bind size: 132KDObserved bind size: 132KD



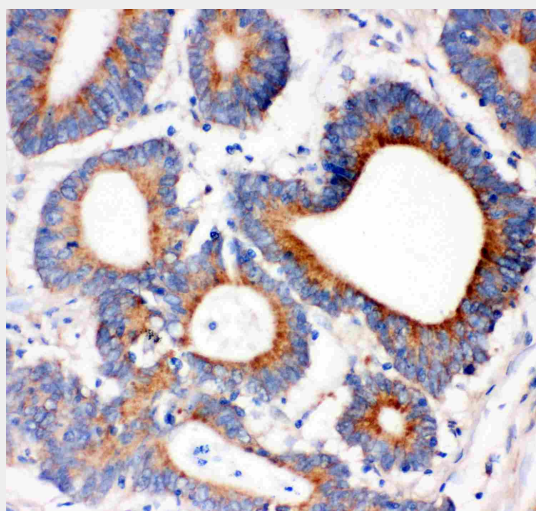
Anti- IRS1 antibody, ABO11914, IHC(P)IHC(P): Mouse Intestine Tissue



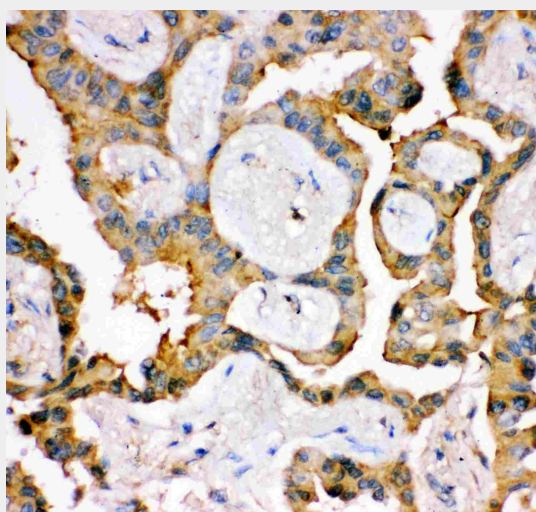
Anti- IRS1 antibody, ABO11914, IHC(P)IHC(P): Rat Intestine Tissue



Anti- IRS1 antibody, ABO11914, IHC(P)IHC(P): Rat Skeletal Muscle Tissue



Anti- IRS1 antibody, ABO11914, IHC(P)IHC(P): Human Intestinal Cancer Tissue



Anti- IRS1 antibody, ABO11914, IHC(P)IHC(P): Human Lung Cancer Tissue

Anti-IRS1 Picoband Antibody - Background

Insulin receptor substrate 1(IRS-1) is a signalling adapter protein that in humans is encoded by the IRS-1 gene. It is mapped to 2q36.3. This gene exhibited no intrinsic enzyme activity, and it can serve as a docking protein involved in binding and activating other signal transduction molecules after being phosphorylated on tyrosine by insulin receptor kinase. IRS1 plays a key role in transmitting signals from the insulin and insulin-like growth factor-1(IGF-1) receptors to intracellular pathways PI3K/Akt and Erk MAP kinase pathways. IRS1 also has important biological function for both metabolic and mitogenic(growth promoting) pathways. In addition to those, IRS1 is a key regulator of PI3K within malignant cells.