

**Anti-FOXM1 Picoband Antibody**  
Catalog # ABO11885**Specification****Anti-FOXM1 Picoband Antibody - Product Information**

Application	WB
Primary Accession	<a href="#">Q08050</a>
Host	Rabbit
Reactivity	Human
Clonality	Polyclonal
Format	Lyophilized

**Description**

Rabbit IgG polyclonal antibody for Forkhead box protein M1(FOXM1) detection. Tested with WB in Human.

**Reconstitution**

Add 0.2ml of distilled water will yield a concentration of 500ug/ml.

**Anti-FOXM1 Picoband Antibody - Additional Information**

**Gene ID** 2305

**Other Names**

Forkhead box protein M1, Forkhead-related protein FKHL16, Hepatocyte nuclear factor 3 forkhead homolog 11, HFH-11, HNF-3/fork-head homolog 11, M-phase phosphoprotein 2, MPM-2 reactive phosphoprotein 2, Transcription factor Trident, Winged-helix factor from INS-1 cells, FOXM1, FKHL16, HFH11, MPP2, WIN

**Calculated MW**

84283 MW KDa

**Application Details**

Western blot, 0.1-0.5 µg/ml, Human<br>

**Subcellular Localization**

Nucleus.

**Tissue Specificity**

Expressed in thymus, testis, small intestine, colon followed by ovary. Appears to be expressed only in adult organs containing proliferating/cycling cells or in response to growth factors. Also expressed in epithelial cell lines derived from tumors. Not expressed in resting cells. Isoform 2 is highly expressed in testis.

**Protein Name**

Forkhead box protein M1

**Contents**

Each vial contains 5mg BSA, 0.9mg NaCl, 0.2mg Na<sub>2</sub>HPO<sub>4</sub>, 0.05mg Na<sub>3</sub>.

**Immunogen**

E.coli-derived human FOXM1 recombinant protein (Position: A411-Q763). Human FOXM1 shares 75% and 76% amino acid (aa) sequences identity with mouse and rat FOXM1, respectively.

**Purification**

Immunogen affinity purified.

**Cross Reactivity**

No cross reactivity with other proteins

**Storage**

**At -20°C for one year. After reconstitution, at 4°C for one month. It can also be aliquotted and stored frozen at -20°C for a longer time. Avoid repeated freezing and thawing.**

**Sequence Similarities**

Contains 1 fork-head DNA-binding domain.

**Anti-FOXM1 Picoband Antibody - Protein Information****Name** FOXM1

**Synonyms** FKHL16, HFH11, MPP2, WIN

**Function**

Transcription factor regulating the expression of cell cycle genes essential for DNA replication and mitosis (PubMed: [19160488](http://www.uniprot.org/citations/19160488), PubMed: [20360045](http://www.uniprot.org/citations/20360045)). Plays a role in the control of cell proliferation (PubMed: [19160488](http://www.uniprot.org/citations/19160488)). Also plays a role in DNA break repair, participating in the DNA damage checkpoint response (PubMed: [17101782](http://www.uniprot.org/citations/17101782)). Promotes transcription of PHB2 (PubMed: [33754036](http://www.uniprot.org/citations/33754036)).

**Cellular Location**

Nucleus.

**Tissue Location**

Expressed in thymus, testis, small intestine, colon followed by ovary. Appears to be expressed only in adult organs containing proliferating/cycling cells or in response to growth factors. Also expressed in epithelial cell lines derived from tumors Not expressed in resting cells. Isoform 2 is highly expressed in testis

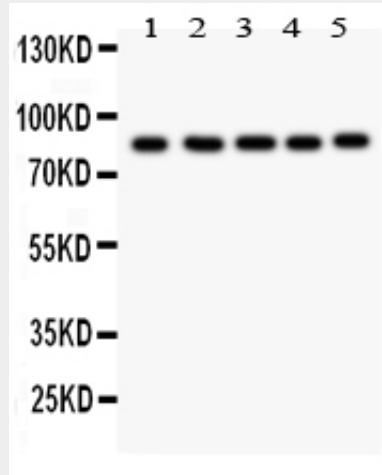
**Anti-FOXM1 Picoband Antibody - Protocols**

Provided below are standard protocols that you may find useful for product applications.

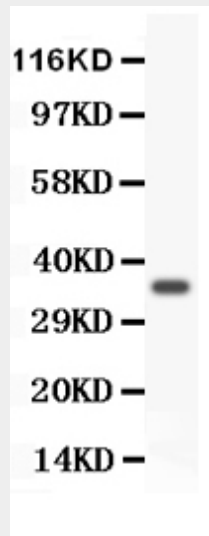
- [Western Blot](#)
- [Blocking Peptides](#)
- [Dot Blot](#)
- [Immunohistochemistry](#)
- [Immunofluorescence](#)

- [Immunoprecipitation](#)
- [Flow Cytometry](#)
- [Cell Culture](#)

**Anti-FOXM1 Picoband Antibody - Images**



Anti- FOXM1 antibody, ABO11885, Western blottingAll lanes: Anti FOXM1 (ABO11885) at 0.5ug/mlLane 1: HELA Whole Cell Lysate at 40ugLane 2: COLO320 Whole Cell Lysate at 40ugLane 3: SW620 Whole Cell Lysate at 40ugLane 4: SKOV Whole Cell Lysate at 40ugLane 5: MCD-7 Whole Cell Lysate at 40ugPredicted bind size: 84KDObserved bind size: 84KD



Anti- FOXM1 antibody, ABO11885, Western blottingAll lanes: Anti FOXM1 (ABO11885) at 0.5ug/mlWB: Recombinant Human FOXM1 Protein 0.5ngPredicted bind size: 36KDObserved bind size: 36KD

**Anti-FOXM1 Picoband Antibody - Background**

Forkhead box protein M1, also called FOXM1, is a protein that in humans is encoded by the FOXM1 gene. It is mapped to 12p13.33. The protein encoded by this gene is a member of the FOX family of transcription factors. FOXM1 is known to play a key role in cell cycle progression where endogenous FOXM1 expression peaks at S and G2/M phases and also in the control of cell proliferation. FOXM1 gene is now known as a human proto-oncogene. Abnormal upregulation of FOXM1 is involved in the oncogenesis of basal cell carcinoma, the most common human cancer worldwide. It was hypothesized that FOXM1 induces cancer initiation through stem/progenitor cell expansion. What's

more, FOXM1 has been shown to modulate the epigenome. It was found that overexpression of FOXM1 brain washes" normal cells to adopt cancer-like epigenome."