

Anti-FSH Beta Picoband Antibody
Catalog # ABO11813**Specification**

Anti-FSH Beta Picoband Antibody - Product Information

Application	WB, IHC
Primary Accession	P01225
Host	Rabbit
Reactivity	Human, Mouse
Clonality	Polyclonal
Format	Lyophilized

Description

Rabbit IgG polyclonal antibody for Follitropin subunit beta(FSHB) detection. Tested with WB, IHC-P in Human;Mouse.

Reconstitution

Add 0.2ml of distilled water will yield a concentration of 500ug/ml.

Anti-FSH Beta Picoband Antibody - Additional Information

Gene ID 2488

Other Names

Follitropin subunit beta, Follicle-stimulating hormone beta subunit, FSH-B, FSH-beta, Follitropin beta chain, FSHB

Calculated MW

14700 MW KDa

Application Details

Immunohistochemistry(Paraffin-embedded Section), 0.5-1 µg/ml, Human, Mouse, By Heat
Western blot, 0.1-0.5 µg/ml, Human

Subcellular Localization

Secreted.

Protein Name

Follitropin subunit beta

Contents

Each vial contains 5mg BSA, 0.9mg NaCl, 0.2mg Na₂HPO₄, 0.05mg Na₃.

Immunogen

E.coli-derived human FSH beta recombinant protein (Position: N19-E129). Human FSH beta shares 90% and 89% amino acid (aa) sequences identity with mouse and rat FSH beta, respectively.

Purification

Immunogen affinity purified.

Cross Reactivity

No cross reactivity with other proteins

Storage

At -20°C for one year. After reconstitution, at 4°C for one month. It can also be aliquotted and stored frozen at -20°C for a longer time. Avoid repeated freezing and thawing.

Sequence Similarities

Belongs to the glycoprotein hormones subunit beta family.

Anti-FSH Beta Picoband Antibody - Protein Information

Name FSHB

Function

Together with the alpha chain CGA constitutes follitropin, the follicle-stimulating hormone, and provides its biological specificity to the hormone heterodimer. Binds FSHR, a G protein-coupled receptor, on target cells to activate downstream signaling pathways (PubMed:24692546, PubMed:2494176). Follitropin is involved in follicle development and spermatogenesis in reproductive organs (PubMed:407105, PubMed:8220432).

Cellular Location

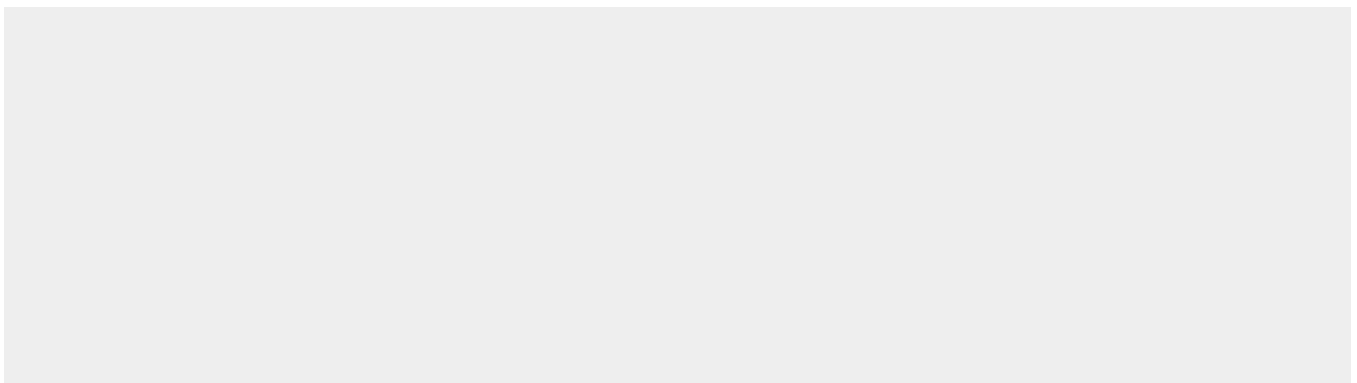
Secreted. Note=Efficient secretion requires dimerization with CGA

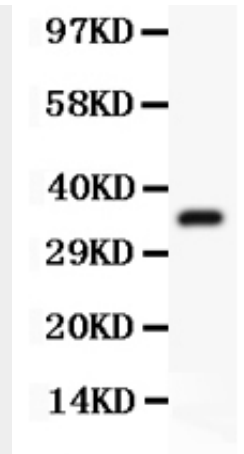
Anti-FSH Beta Picoband Antibody - Protocols

Provided below are standard protocols that you may find useful for product applications.

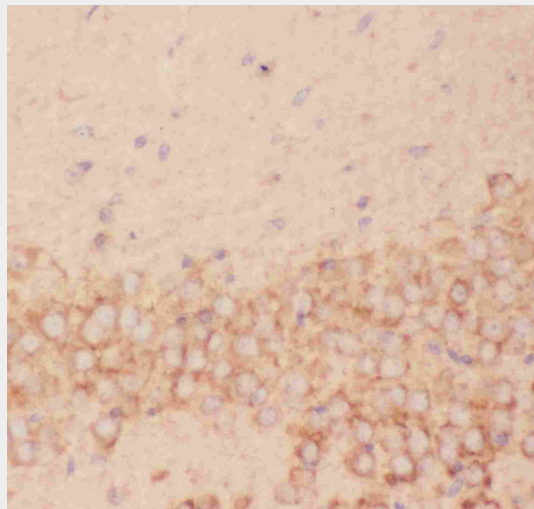
- [Western Blot](#)
- [Blocking Peptides](#)
- [Dot Blot](#)
- [Immunohistochemistry](#)
- [Immunofluorescence](#)
- [Immunoprecipitation](#)
- [Flow Cytometry](#)
- [Cell Culture](#)

Anti-FSH Beta Picoband Antibody - Images

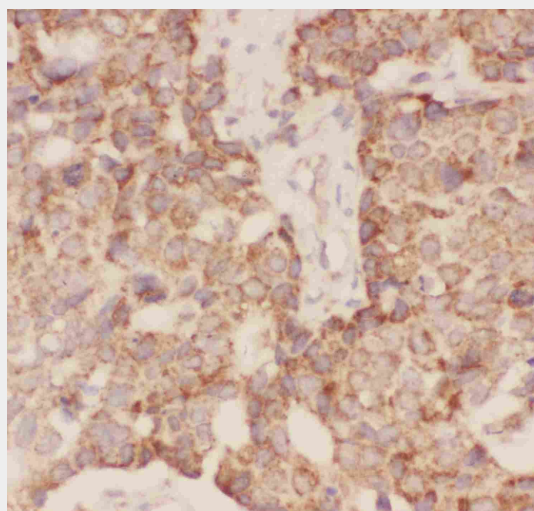




Anti-FSH beta Picoband antibody, ABO11813-1.jpg All lanes: Anti FSH beta (ABO11813) at 0.5ug/ml
WB: Recombinant Human FSH beta Protein 0.5ng
Predicted bind size: 36KD
Observed bind size: 36KD



Anti-FSH beta Picoband antibody, ABO11813-1.jpg IHC(P): Mouse Brain Tissue



Anti-FSH beta Picoband antibody, ABO11813-1.jpg IHC(P): Human Mammary Cancer Tissue

Anti-FSH Beta Picoband Antibody - Background

FSHB, also known as Follitropin subunit beta, is a protein that in humans is encoded by the FSHB gene, and this gene is mapped to 11p14.1. FSHB enables ovarian folliculogenesis to the antral follicle stage and is essential for Sertoli cell proliferation and maintenance of sperm quality in the testis. It can stimulate development of follicle and spermatogenesis in the reproductive organs. This gene encodes the beta subunit of follicle-stimulating hormone. In conjunction with luteinizing hormone, follicle-stimulating hormone induces egg and sperm production.