

Anti-MMP-7 Antibody
Catalog # ABO11760**Specification**

Anti-MMP-7 Antibody - Product Information

Application	IHC, WB
Primary Accession	P09237
Host	Rabbit
Reactivity	Human
Clonality	Polyclonal
Format	Lyophilized

Description

Rabbit IgG polyclonal antibody for Matrilysin(MMP7) detection. Tested with WB, IHC-P, ELISA in Human.

Reconstitution

Add 0.2ml of distilled water will yield a concentration of 500ug/ml.

Anti-MMP-7 Antibody - Additional Information

Gene ID 4316

Other Names

Matrilysin, 3.4.24.23, Matrin, Matrix metalloproteinase-7, MMP-7, Pump-1 protease, Uterine metalloproteinase, MMP7, MPL1, PUMP1

Calculated MW

29677 MW KDa

Application Details

ELISA , 0.1-0.5 µg/ml, Human, -
Immunohistochemistry(Paraffin-embedded Section), 0.5-1 µg/ml, Human, By Heat
Western blot, 0.1-0.5 µg/ml, Human

Subcellular Localization

Secreted, extracellular space, extracellular matrix .

Protein Name

Matrilysin

Contents

Each vial contains 5mg BSA, 0.9mg NaCl, 0.2mg Na₂HPO₄, 0.05mg Na₃N.

Immunogen

E.coli-derived human MMP7 recombinant protein (Position: M1-K267). Human MMP7 shares 71% amino acid (aa) sequence identity with both mouse and rat MMP7.

Purification

Immunogen affinity purified.

Cross Reactivity

No cross reactivity with other proteins

Storage

At -20°C for one year. After reconstitution, at 4°C for one month. It can also be aliquotted and stored frozen at -20°C for a longer time. Avoid repeated freezing and thawing.

Sequence Similarities

Belongs to the peptidase M10A family.

Anti-MMP-7 Antibody - Protein Information

Name MMP7

Synonyms MPLS1, PUMP1

Function

Degrades casein, gelatins of types I, III, IV, and V, and fibronectin. Activates procollagenase.

Cellular Location

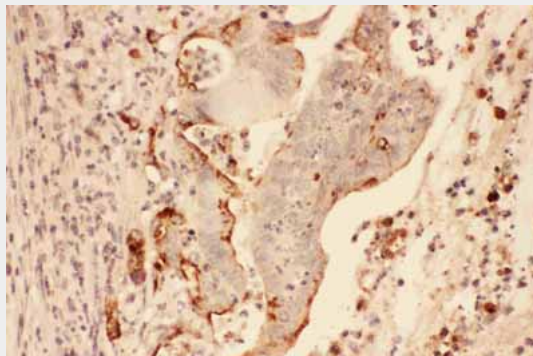
Secreted, extracellular space, extracellular matrix

Anti-MMP-7 Antibody - Protocols

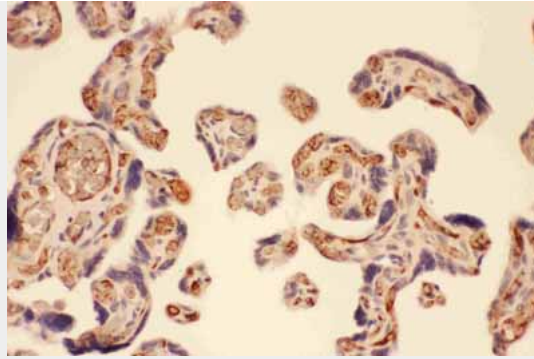
Provided below are standard protocols that you may find useful for product applications.

- [Western Blot](#)
- [Blocking Peptides](#)
- [Dot Blot](#)
- [Immunohistochemistry](#)
- [Immunofluorescence](#)
- [Immunoprecipitation](#)
- [Flow Cytometry](#)
- [Cell Culture](#)

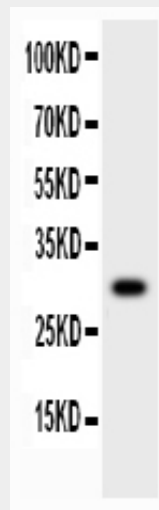
Anti-MMP-7 Antibody - Images



Anti-MMP7 Picoband antibody, ABO11760-1.JPGIHC(P): Human Intestinal Cancer Tissue



Anti-MMP7 Picoband antibody, ABO11760-2.JPGIHC(P): Human Placenta Tissue



Anti-MMP7 Picoband antibody, ABO11760-3.jpg All lanes: Anti-MMP7 (ABO11760) at 0.5ug/ml WB: A549 Whole Cell Lysate at 40ug Predicted bind size: 30KD Observed bind size: 30KD

Anti-MMP-7 Antibody - Background

Matrix metalloproteinase-7 (MMP-7) previously called putative metalloproteinase I (PUMP1) or matrilysin. The MMP-7 gene has been identified through studies of collagenase-related connective-tissue-degrading metalloproteinases produced by human tumors. The MMP-7 protein has 267 amino acids and is significantly shorter than stromelysin or collagenase (477 and 469 amino acids, respectively). Matrix metalloproteinases play a crucial role in tumor invasion and metastasis. MMP-7, a member of the matrix metalloproteinase family, is structurally different from the other matrix metalloproteinases by virtue of the absence of a conserved COOH-terminal protein domain. In addition, MMP-7 mRNA is regulated in a specific and distinct manner in normal and malignant tissues. MMP-7 has been shown to correlate with nodal or distant metastasis in colorectal carcinomas, however, its implication in early invasive colorectal carcinomas has not been determined. MMP-7 is also a mediator of pulmonary fibrosis and a potential therapeutic target. The standard product used in this kit is recombinant human MMP-7, consisting of 250 amino acids with the molecular mass of 28KDa. The detected MMP-7 includes zymogen and active enzyme.