

Anti-ICAM-1 Antibody
Catalog # ABO11742**Specification**

Anti-ICAM-1 Antibody - Product Information

Application	IHC
Primary Accession	P05362
Host	Rabbit
Reactivity	Human
Clonality	Polyclonal
Format	Lyophilized

Description

Rabbit IgG polyclonal antibody for Intercellular adhesion molecule 1(ICAM1) detection. Tested with WB, IHC-P in Human.

Reconstitution

Add 0.2ml of distilled water will yield a concentration of 500ug/ml.

Anti-ICAM-1 Antibody - Additional Information

Gene ID 3383

Other Names

Intercellular adhesion molecule 1, ICAM-1, Major group rhinovirus receptor, CD54, ICAM1

Calculated MW

57825 MW KDa

Application Details

Immunohistochemistry(Paraffin-embedded Section), 0.5-1 µg/ml, Human, By Heat
Western blot, 0.1-0.5 µg/ml, Human

Subcellular Localization

Membrane; Single-pass type I membrane protein.

Protein Name

Intercellular adhesion molecule 1

Contents

Each vial contains 5mg BSA, 0.9mg NaCl, 0.2mg Na₂HPO₄, 0.05mg Na₃N.

Immunogen

E.coli-derived human ICAM1 recombinant protein (Position: L214-P532). Human ICAM1 shares 52% and 48% amino acid (aa) sequences identity with mouse and rat ICAM1, respectively.

Purification

Immunogen affinity purified.

Cross Reactivity

No cross reactivity with other proteins

Storage

At -20°C for one year. After reconstitution, at 4°C for one month. It can also be aliquotted and stored frozen at -20°C for a longer time. Avoid repeated freezing and thawing.

Sequence Similarities

Belongs to the immunoglobulin superfamily. ICAM family.

Anti-ICAM-1 Antibody - Protein Information

Name ICAM1

Function

ICAM proteins are ligands for the leukocyte adhesion protein LFA-1 (integrin alpha-L/beta-2). During leukocyte trans-endothelial migration, ICAM1 engagement promotes the assembly of endothelial apical cups through ARHGEF26/SGEF and RHOG activation.

Cellular Location

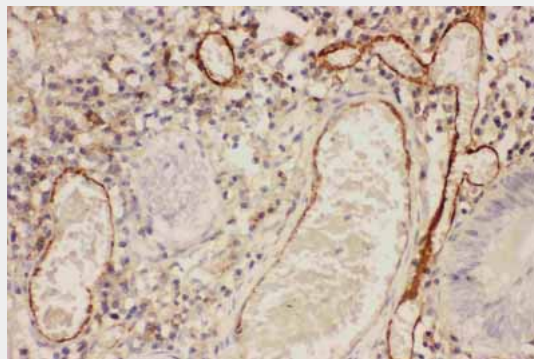
Membrane; Single-pass type I membrane protein.

Anti-ICAM-1 Antibody - Protocols

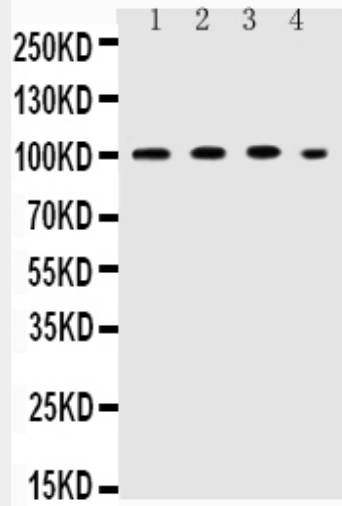
Provided below are standard protocols that you may find useful for product applications.

- [Western Blot](#)
- [Blocking Peptides](#)
- [Dot Blot](#)
- [Immunohistochemistry](#)
- [Immunofluorescence](#)
- [Immunoprecipitation](#)
- [Flow Cytometry](#)
- [Cell Culture](#)

Anti-ICAM-1 Antibody - Images



Anti-ICAM1 Picoband antibody, ABO11742-1.JPGIHC(P): Human Intestinal Cancer Tissue



Anti-ICAM1 Picoband antibody, ABO11742-2.jpg All lanes: Anti-ICAM1 (ABO11742) at 0.5 µg/ml
Lane 1: HEPG2 Whole Cell Lysate at 40 µg
Lane 2: K562 Whole Cell Lysate at 40 µg
Lane 3: A549 Whole Cell Lysate at 40 µg
Lane 4: HT1080 Whole Cell Lysate at 40 µg
Predicted bind size: 58 kD
Observed bind size: 100 kD

Anti-ICAM-1 Antibody - Background

Intercellular adhesion molecule-1 (ICAM-1) is an integral membrane protein, a member of the immunoglobulin superfamily, and a ligand for lymphocyte function-associated (LFA) antigens, a beta 2 leukocyte integrin. The normal function of human ICAM-1 is to provide adhesion between endothelial cells and leukocytes after injury or stress. ICAM-1 binds to leukocyte function-associated antigen (LFA-1) or macrophage-1 antigen (Mac-1). It is found on leukocytes, fibroblasts, epithelial cells and endothelial cells and its expression is regulated by inflammatory cytokines. ICAM-1 has a tissue distribution similar to that of the major histocompatibility complex class II antigens and is likely to play a role in inflammatory responses.