

**Anti-ICAM-1 Antibody**  
Catalog # ABO11729**Specification**

---

**Anti-ICAM-1 Antibody - Product Information**

Application	IHC, WB
Primary Accession	<a href="#">P05362</a>
Host	Rabbit
Reactivity	Human
Clonality	Polyclonal
Format	Lyophilized

**Description**

Rabbit IgG polyclonal antibody for Intercellular adhesion molecule 1(ICAM1) detection. Tested with WB, IHC-P in Human.

**Reconstitution**

Add 0.2ml of distilled water will yield a concentration of 500ug/ml.

**Anti-ICAM-1 Antibody - Additional Information**

**Gene ID** 3383

**Other Names**

Intercellular adhesion molecule 1, ICAM-1, Major group rhinovirus receptor, CD54, ICAM1

**Calculated MW**

57825 MW KDa

**Application Details**

Immunohistochemistry(Paraffin-embedded Section), 0.5-1 µg/ml, Human, By Heat<br>Western blot, 0.1-0.5 µg/ml, Human<br>

**Subcellular Localization**

Membrane; Single-pass type I membrane protein.

**Protein Name**

Intercellular adhesion molecule 1

**Contents**

Each vial contains 5mg BSA, 0.9mg NaCl, 0.2mg Na<sub>2</sub>HPO<sub>4</sub>, 0.05mg Na<sub>3</sub>N.

**Immunogen**

NSO-derived human ICAM1 recombinant protein (Position: Q28-E480). Human ICAM1 shares 55% and 53% amino acid (aa) sequences identity with mouse and rat ICAM1, respectively.

**Purification**

Immunogen affinity purified.

**Cross Reactivity**

No cross reactivity with other proteins

Storage

**At -20°C for one year. After r°Constitution, at 4°C for one month. It°Can also be aliquotted and stored frozen at -20°C for a longer time.Avoid repeated freezing and thawing.**

#### Sequence Similarities

Belongs to the immunoglobulin superfamily. ICAM family.

### Anti-ICAM-1 Antibody - Protein Information

**Name** ICAM1

#### Function

ICAM proteins are ligands for the leukocyte adhesion protein LFA-1 (integrin alpha-L/beta-2). During leukocyte trans-endothelial migration, ICAM1 engagement promotes the assembly of endothelial apical cups through ARHGEF26/SGEF and RHOG activation.

#### Cellular Location

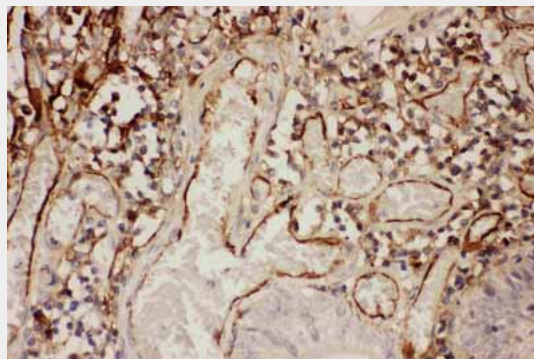
Membrane; Single-pass type I membrane protein.

### Anti-ICAM-1 Antibody - Protocols

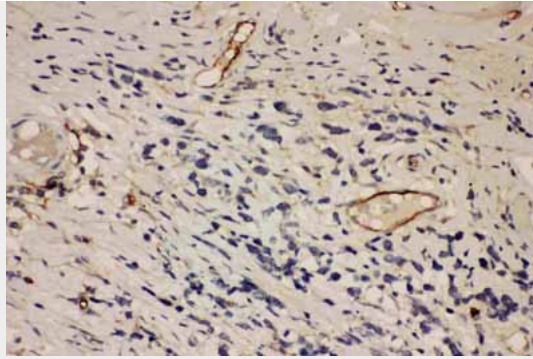
Provided below are standard protocols that you may find useful for product applications.

- [Western Blot](#)
- [Blocking Peptides](#)
- [Dot Blot](#)
- [Immunohistochemistry](#)
- [Immunofluorescence](#)
- [Immunoprecipitation](#)
- [Flow Cytometry](#)
- [Cell Culture](#)

### Anti-ICAM-1 Antibody - Images



Anti-ICAM1 Picoband antibody, IHC(P)IHC(P): Human Intestinal Cancer Tissue



Anti-ICAM1 Picoband antibody, IHC(P) IHC(P): Human Lung Cancer Tissue



Anti-ICAM1 Picoband antibody, Western blotting All lanes: Anti-ICAM1 (ABO11729) at 0.5ug/ml Lane 1: HEPG2 Whole Cell Lysate at 40ug Lane 2: K562 Whole Cell Lysate at 40ug Lane 3: A549 Whole Cell Lysate at 40ug Lane 4: HT1080 Whole Cell Lysate at 40ug Predicted bind size: 58KD Observed bind size: 100KD

### Anti-ICAM-1 Antibody - Background

CD54, also known as ICAM-1. Intercellular adhesion molecule-1 (ICAM1) is a ligand for lymphocyte function-associated (LFA) antigens. Intercellular adhesion molecule-1 (ICAM-1) is an integral membrane protein, a member of the immunoglobulin superfamily, and a ligand for LFA-1, a beta 2 leukocyte integrin. ICAM1 protein is the major human rhinovirus receptor. ICAM1 gene is mapped to human chromosome 19. In humans, lymphocyte adhesion to cells is mediated by the protein heterodimer CD11a/CD18 (Leu-CAMa, LFA-1) and its ligand CD54 (ICAM-1).