

**Anti-TREX2 Picoband Antibody**  
Catalog # ABO11723

**Specification**

---

**Anti-TREX2 Picoband Antibody - Product Information**

Application	WB
Primary Accession	<a href="#">O9BQ50</a>
Host	Rabbit
Reactivity	Human
Clonality	Polyclonal
Format	Lyophilized

**Description**

Rabbit IgG polyclonal antibody for Three prime repair exonuclease 2(TREX2) detection. Tested with WB in Human.

**Reconstitution**

Add 0.2ml of distilled water will yield a concentration of 500ug/ml.

**Anti-TREX2 Picoband Antibody - Additional Information**

**Gene ID** 11219

**Other Names**

Three prime repair exonuclease 2, 3.1.11.2, 3'-5' exonuclease TREX2, TREX2

**Calculated MW**

30621 MW KDa

**Application Details**

Western blot, 0.1-0.5 µg/ml, Human<br>

**Subcellular Localization**

Nucleus .

**Tissue Specificity**

Detected in heart, breast, prostate, skeletal muscle, testis, uterus, bone marrow, colon, small intestine, stomach and thymus. .

**Protein Name**

Three prime repair exonuclease 2

**Contents**

Each vial contains 5mg BSA, 0.9mg NaCl, 0.2mg Na<sub>2</sub>HPO<sub>4</sub>, 0.05mg NaN<sub>3</sub>.

**Immunogen**

E. coli-derived human TREX2 recombinant protein (Position: E69-A279). Human TREX2 shares 88.6% amino acid (aa) sequence identity with mouse TREX2.

**Purification**

Immunogen affinity purified.

**Cross Reactivity**

No cross reactivity with other proteins.

Storage

**At -20°C for one year. After reconstitution, at 4°C for one month. It can also be aliquotted and stored frozen at -20°C for a longer time. Avoid repeated freezing and thawing.**

**Anti-TREX2 Picoband Antibody - Protein Information**

**Name** TREX2

**Function**

Exonuclease with a preference for double-stranded DNA with mismatched 3' termini. May play a role in DNA repair.

**Cellular Location**

Nucleus.

**Tissue Location**

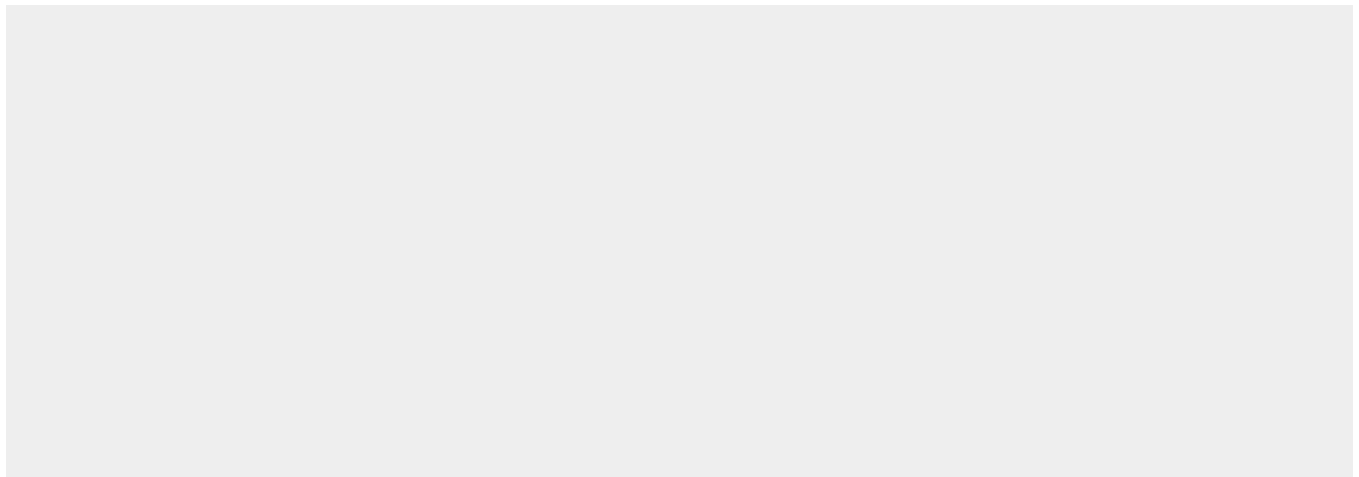
Detected in heart, breast, prostate, skeletal muscle, testis, uterus, bone marrow, colon, small intestine, stomach and thymus.

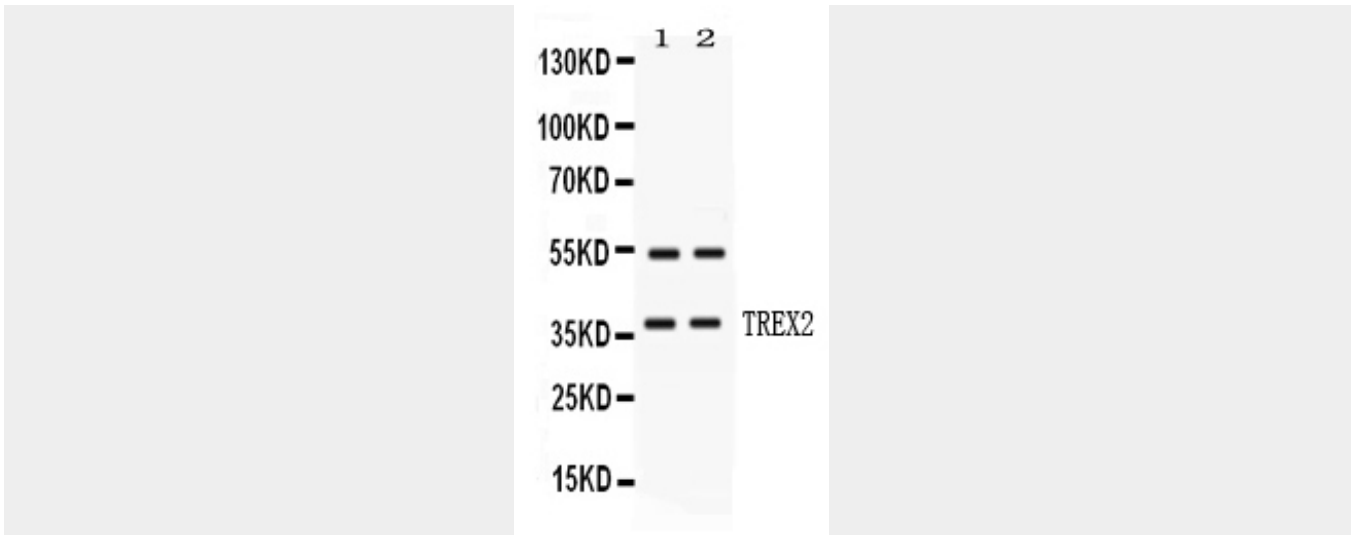
**Anti-TREX2 Picoband Antibody - Protocols**

Provided below are standard protocols that you may find useful for product applications.

- [Western Blot](#)
- [Blocking Peptides](#)
- [Dot Blot](#)
- [Immunohistochemistry](#)
- [Immunofluorescence](#)
- [Immunoprecipitation](#)
- [Flow Cytometry](#)
- [Cell Culture](#)

**Anti-TREX2 Picoband Antibody - Images**





Western blot analysis of TREX2 expression in HELA whole cell lysates (lane 1) and MCF-7 whole cell lysates (lane 2). TREX2 at 37KD was detected using rabbit anti- TREX2 Antigen Affinity purified polyclonal antibody (Catalog # ABO11723) at 0.5 µg/mL. The blot was developed using chemiluminescence (ECL) method .

#### **Anti-TREX2 Picoband Antibody - Background**

Three prime repair exonuclease 2 is an enzyme that in humans is encoded by the TREX2 gene. By genomic sequence analysis, the TREX2 gene is mapped to chromosome Xq28. This gene encodes a protein with 3' exonuclease activity. Enzymes with this activity are involved in DNA replication, repair, and recombination. Similarity to an E. coli protein suggests that this enzyme may be a subunit of DNA polymerase III, which does not have intrinsic exonuclease activity.