

Anti-LDHB Picoband Antibody
Catalog # ABO11694**Specification**

Anti-LDHB Picoband Antibody - Product Information

Application	WB, IHC
Primary Accession	P07195
Host	Rabbit
Reactivity	Human, Mouse, Rat
Clonality	Polyclonal
Format	Lyophilized

Description

Rabbit IgG polyclonal antibody for L-lactate dehydrogenase B chain(LDHB) detection. Tested with WB, IHC-P in Human;Mouse;Rat.

Reconstitution

Add 0.2ml of distilled water will yield a concentration of 500ug/ml.

Anti-LDHB Picoband Antibody - Additional Information

Gene ID 3945

Other Names

L-lactate dehydrogenase B chain, LDH-B, 1.1.1.27, LDH heart subunit, LDH-H, Renal carcinoma antigen NY-REN-46, LDHB

Calculated MW

36638 MW KDa

Application Details

Immunohistochemistry(Paraffin-embedded Section), 0.5-1 µg/ml, Human, Mouse, Rat, By Heat
Western blot, 0.1-0.5 µg/ml, Human, Mouse, Rat

Subcellular Localization

Cytoplasm.

Protein Name

L-lactate dehydrogenase B chain

Contents

Each vial contains 5mg BSA, 0.9mg NaCl, 0.2mg Na₂HPO₄, 0.05mg Na₃N.

Immunogen

E. coli-derived human LDHB recombinant protein (Position: E237-L334). Human LDHB shares 98% amino acid (aa) sequence identity with both mouse and rat LDHB.

Purification

Immunogen affinity purified.

Cross Reactivity

No cross reactivity with other proteins

Storage

At -20°C for one year. After reconstitution, at 4°C for one month. It can also be aliquotted and stored frozen at -20°C for a longer time. Avoid repeated freezing and thawing.

Anti-LDHB Picoband Antibody - Protein Information

Name LDHB

Function

Interconverts simultaneously and stereospecifically pyruvate and lactate with concomitant interconversion of NADH and NAD(+).

Cellular Location

Cytoplasm. Mitochondrion inner membrane; Peripheral membrane protein

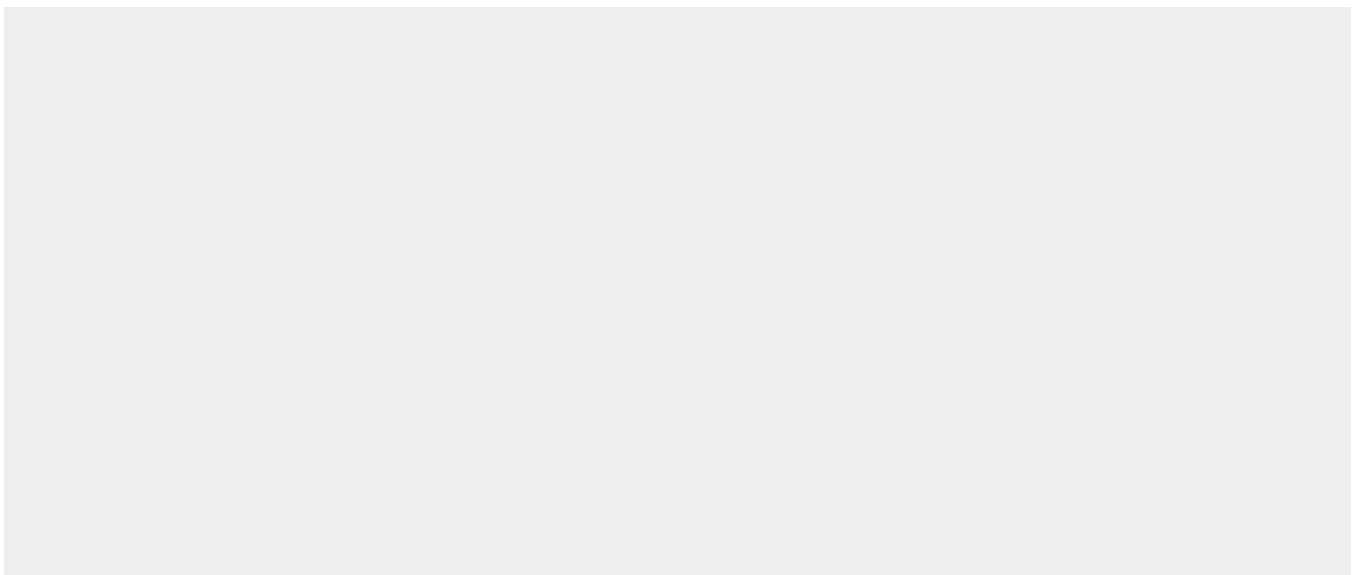
Tissue Location

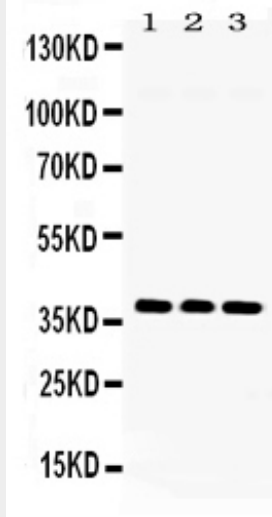
Predominantly expressed in aerobic tissues such as cardiac muscle.

Anti-LDHB Picoband Antibody - Protocols

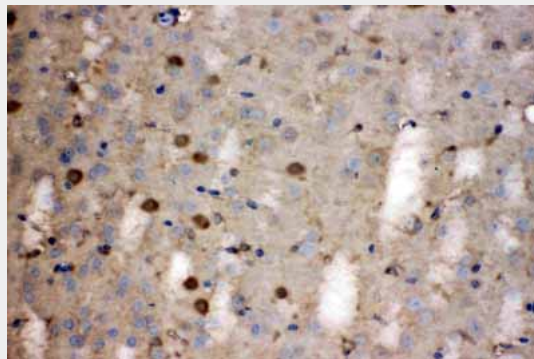
Provided below are standard protocols that you may find useful for product applications.

- [Western Blot](#)
- [Blocking Peptides](#)
- [Dot Blot](#)
- [Immunohistochemistry](#)
- [Immunofluorescence](#)
- [Immunoprecipitation](#)
- [Flow Cytometry](#)
- [Cell Culture](#)

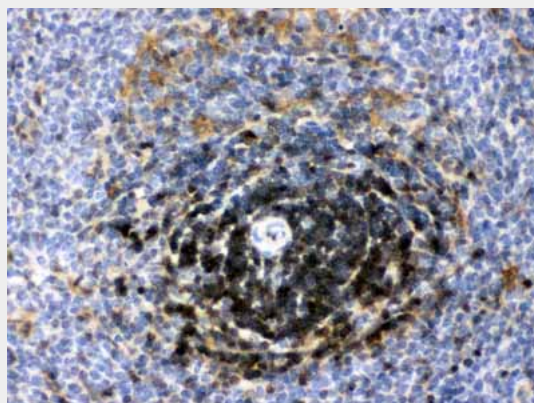
Anti-LDHB Picoband Antibody - Images



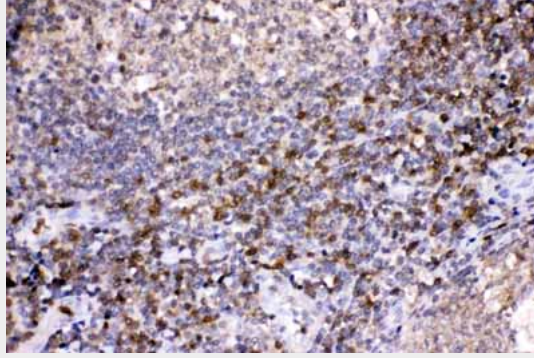
Western blot analysis of LDHB expression in rat brain extract (lane 1), NIH3T3 whole cell lysates (lane 2) and U2OS whole cell lysates (lane 3). LDHB at 37KD was detected using rabbit anti- LDHB Antigen Affinity purified polyclonal antibody (Catalog # ABO11694) at 0.5 μ g/mL. The blot was developed using chemiluminescence (ECL) method .



LDHB was detected in paraffin-embedded sections of mouse brain tissues using rabbit anti- LDHB Antigen Affinity purified polyclonal antibody (Catalog # ABO11694) at 1 μ g/mL. The immunohistochemical section was developed using SABC method .



LDHB was detected in paraffin-embedded sections of rat spleen tissues using rabbit anti- LDHB Antigen Affinity purified polyclonal antibody (Catalog # ABO11694) at 1 μ g/mL. The immunohistochemical section was developed using SABC method .



LDHB was detected in paraffin-embedded sections of human tonsil tissues using rabbit anti- LDHB Antigen Affinity purified polyclonal antibody (Catalog # ABO11694) at 1 μ g/mL. The immunohistochemical section was developed using SABC method .

Anti-LDHB Picoband Antibody - Background

The LDHB gene encodes the B subunit of lactate dehydrogenase enzyme, which catalyzes the interconversion of pyruvate and lactate with concomitant interconversion of NADH and NAD⁺ in a post-glycolysis process. Alternatively spliced transcript variants have been found for this gene. Recent studies have shown that a C-terminally extended isoform is produced by use of an alternative in-frame translation termination codon via a stop codon readthrough mechanism, and that this isoform is localized in the peroxisomes. Mutations in this gene are associated with lactate dehydrogenase B deficiency. Pseudogenes have been identified on chromosomes X, 5 and 13.