

Anti-BMP15 Picoband Antibody
Catalog # ABO11666**Specification**

Anti-BMP15 Picoband Antibody - Product Information

Application	WB
Primary Accession	O95972
Host	Rabbit
Reactivity	Human
Clonality	Polyclonal
Format	Lyophilized

Description

Rabbit IgG polyclonal antibody for Bone morphogenetic protein 15(BMP15) detection. Tested with WB in Human.

Reconstitution

Add 0.2ml of distilled water will yield a concentration of 500ug/ml.

Anti-BMP15 Picoband Antibody - Additional Information

Gene ID 9210

Other Names

Bone morphogenetic protein 15, BMP-15, Growth/differentiation factor 9B, GDF-9B, BMP15, GDF9B

Calculated MW

45055 MW KDa

Application Details

Western blot, 0.1-0.5 µg/ml, Human

Subcellular Localization

Secreted.

Protein Name

Bone morphogenetic protein 15

Contents

Each vial contains 5mg BSA, 0.9mg NaCl, 0.2mg Na₂HPO₄, 0.05mg Na₃.

Immunogen

E. coli-derived human BMP15 recombinant protein (Position: Q268-R392). Human BMP15 shares 69.6% amino acid (aa) sequence identity with mouse BMP15.

Purification

Immunogen affinity purified.

Cross Reactivity

No cross reactivity with other proteins.

Storage

At -20°C for one year. After r°Constitution, at 4°C for one month. It°Can also be aliquotted and stored frozen at -20°C for a longer time.Avoid repeated freezing and thawing.

Anti-BMP15 Picoband Antibody - Protein Information

Name BMP15

Synonyms GDF9B

Function

May be involved in follicular development. Oocyte-specific growth/differentiation factor that stimulates folliculogenesis and granulosa cell (GC) growth.

Cellular Location

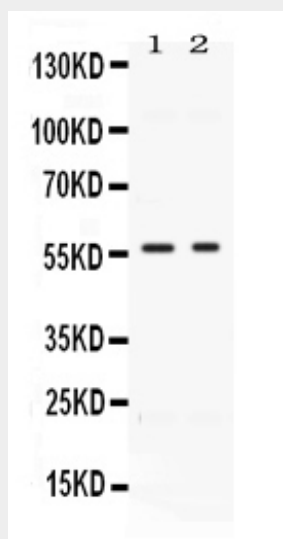
Secreted.

Anti-BMP15 Picoband Antibody - Protocols

Provided below are standard protocols that you may find useful for product applications.

- [Western Blot](#)
- [Blocking Peptides](#)
- [Dot Blot](#)
- [Immunohistochemistry](#)
- [Immunofluorescence](#)
- [Immunoprecipitation](#)
- [Flow Cytometry](#)
- [Cell Culture](#)

Anti-BMP15 Picoband Antibody - Images



Western blot analysis of BMP15 expression in HELA whole cell lysates (lane 1) and MCF-7 whole cell lysates (lane 2). BMP15 at 56KD was detected using rabbit anti- BMP15 Antigen Affinity

purified polyclonal antibody (Catalog # ABO11666) at 0.5 µg/mL. The blot was developed using chemiluminescence (ECL) method .

Anti-BMP15 Picoband Antibody - Background

Bone morphogenetic protein 15 is a protein that in humans is encoded by the BMP15 gene. It's mainly involved in folliculogenesis. The protein encoded by this gene is a member of the bone morphogenetic protein family which is part of the transforming growth factor-beta superfamily. The transforming growth factor-beta superfamily includes large families of growth and differentiation factors. It is thought that this protein may be involved in oocyte maturation and follicular development as a homodimer or by forming heterodimers with a related protein, Gdf9. Defects in this gene are the cause of ovarian dysgenesis 2.