

**Anti-KLK8/Kallikrein-8 Picoband Antibody**  
Catalog # ABO11623**Specification****Anti-KLK8/Kallikrein-8 Picoband Antibody - Product Information**

Application	WB
Primary Accession	<a href="#">O60259</a>
Host	Rabbit
Reactivity	Human
Clonality	Polyclonal
Format	Lyophilized

**Description**

Rabbit IgG polyclonal antibody for Kallikrein-8(KLK8) detection. Tested with WB in Human.

**Reconstitution**

Add 0.2ml of distilled water will yield a concentration of 500ug/ml.

**Anti-KLK8/Kallikrein-8 Picoband Antibody - Additional Information**

**Gene ID** 11202

**Other Names**

Kallikrein-8, hK8, 3.4.21.118, Neuropsin, NP, Ovasin, Serine protease 19, Serine protease TADG-14, Tumor-associated differentially expressed gene 14 protein, KLK8, NRPN, PRSS19, TADG14

**Calculated MW**

28048 MW KDa

**Application Details**

Western blot, 0.1-0.5 µg/ml, Human<br>

**Subcellular Localization**

Secreted . Cytoplasm . Shows a cytoplasmic distribution in the keratinocytes.

**Tissue Specificity**

Isoform 1 is predominantly expressed in the pancreas. Isoform 2 is expressed in adult brain and hippocampus. Isoform 1 and isoform 2 are found in fetal brain and placenta. Detected in salivary gland, uterus, thymus, breast, testis and kidney but not in spleen, liver, lung or normal ovarian tissue. Displays an 11.5-fold increase in Alzheimer disease hippocampus compared to controls and is overexpressed in some ovarian carcinomas. Expressed at low levels in normal skin while high levels are found in psoriasis vulgaris, seborrheic keratosis, lichen planus and squamous cell carcinoma skin samples. Expressed in the keratinocytes. .

**Protein Name**

Kallikrein-8

**Contents**

Each vial contains 5mg BSA, 0.9mg NaCl, 0.2mg Na<sub>2</sub>HPO<sub>4</sub>, 0.05mg Na<sub>3</sub>.

**Immunogen**

E.coli-derived human Kallikrein 8 recombinant protein (Position: V33-G260). Human Kallikrein 8 shares 74% and 73.1% amino acid (aa) sequence identity with mouse and rat Kallikrein 8, respectively.

**Purification**

Immunogen affinity purified.

**Cross Reactivity**

No cross reactivity with other proteins

**Storage**

**At -20°C for one year. After r°Constitution, at 4°C for one month. It°Can also be aliquotted and stored frozen at -20°C for a longer time.Avoid repeated freezing and thawing.**

**Anti-KLK8/Kallikrein-8 Picoband Antibody - Protein Information**

**Name** KLK8

**Synonyms** NRPN, PRSS19, TADG14

**Function**

Serine protease which is capable of degrading a number of proteins such as casein, fibrinogen, kininogen, fibronectin and collagen type IV. Also cleaves L1CAM in response to increased neural activity. Induces neurite outgrowth and fasciculation of cultured hippocampal neurons. Plays a role in the formation and maturation of orphan and small synaptic boutons in the Schaffer-collateral pathway, regulates Schaffer-collateral long-term potentiation in the hippocampus and is required for memory acquisition and synaptic plasticity. Involved in skin desquamation and keratinocyte proliferation. Plays a role in the secondary phase of pathogenesis following spinal cord injury.

**Cellular Location**

Secreted. Cytoplasm. Note=Shows a cytoplasmic distribution in the keratinocytes

**Tissue Location**

Isoform 1 is predominantly expressed in the pancreas. Isoform 2 is expressed in adult brain and hippocampus Isoform 1 and isoform 2 are found in fetal brain and placenta. Detected in salivary gland, uterus, thymus, breast, testis and kidney but not in spleen, liver, lung or normal ovarian tissue. Displays an 11.5-fold increase in Alzheimer disease hippocampus compared to controls and is overexpressed in some ovarian carcinomas. Expressed at low levels in normal skin while high levels are found in psoriasis vulgaris, seborrheic keratosis, lichen planus and squamous cell carcinoma skin samples. Expressed in the keratinocytes.

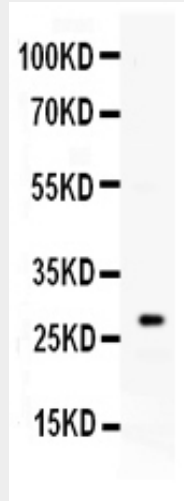
**Anti-KLK8/Kallikrein-8 Picoband Antibody - Protocols**

Provided below are standard protocols that you may find useful for product applications.

- [Western Blot](#)
- [Blocking Peptides](#)
- [Dot Blot](#)
- [Immunohistochemistry](#)
- [Immunofluorescence](#)
- [Immunoprecipitation](#)

- [Flow Cytometry](#)
- [Cell Culture](#)

### Anti-KLK8/Kallikrein-8 Picoband Antibody - Images



Western blot analysis of Kallikrein 8 expression in human placenta extract (lane 1). Kallikrein 8 at 28KD was detected using rabbit anti- Kallikrein 8 Antigen Affinity purified polyclonal antibody (Catalog # ABO11623) at 0.5 µg/mL. The blot was developed using chemiluminescence (ECL) method .

### Anti-KLK8/Kallikrein-8 Picoband Antibody - Background

Kallikrein-8 is a protein that in humans is encoded by the KLK8 gene. Kallikreins are a subgroup of serine proteases having diverse physiological functions. Growing evidence suggests that many kallikreins are implicated in carcinogenesis and some have potential as novel cancer and other disease biomarkers. This gene is one of the fifteen kallikrein subfamily members located in tandem in a gene cluster on chromosome 19. The encoded protein may be involved in proteolytic cascade in the skin and may serve as a biomarker for ovarian cancer. Alternate splicing of this gene results in multiple transcript variants encoding different isoforms.