

Anti-RAB8A Antibody
Catalog # ABO11589**Specification****Anti-RAB8A Antibody - Product Information**

Application	IHC, WB
Primary Accession	P61006
Host	Rabbit
Reactivity	Human, Mouse, Rat
Clonality	Polyclonal
Format	Lyophilized

Description

Rabbit IgG polyclonal antibody for Ras-related protein Rab-8A(RAB8A) detection. Tested with WB, IHC-P in Human;Mouse;Rat.

Reconstitution

Add 0.2ml of distilled water will yield a concentration of 500ug/ml.

Anti-RAB8A Antibody - Additional Information

Gene ID 4218

Other Names

Ras-related protein Rab-8A, Oncogene c-mel, RAB8A, MEL, RAB8

Calculated MW

23668 MW KDa

Application Details

Immunohistochemistry(Paraffin-embedded Section), 0.5-1 µg/ml, Human, Mouse, Rat, By Heat
Western blot, 0.1-0.5 µg/ml, Human, Mouse, Rat

Subcellular Localization

Cell membrane ; Lipid-anchor ; Cytoplasmic side . Golgi apparatus. Recycling endosome membrane. Cell projection, cilium. Cytoplasmic vesicle, phagosome. Cytoplasmic vesicle, phagosome membrane ; Lipid-anchor ; Cytoplasmic side . Colocalizes with OPTN at the Golgi complex and in vesicular structures close to the plasma membrane. In the GDP- bound form, present in the perinuclear region. Shows a polarized distribution to distal regions of cell protrusions in the GTP- bound form. Colocalizes with PARD3, PRKCI, EXOC5, OCLN, PODXL and RAB11A in apical membrane initiation sites (AMIS) during the generation of apical surface and lumenogenesis. Localizes to tubular recycling endosome. Recruited to phagosomes containing S.aureus or M.tuberculosis.

Protein Name

Ras-related protein Rab-8A

Contents

Each vial contains 5mg BSA, 0.9mg NaCl, 0.2mg Na₂HPO₄, 0.05mg Thimerosal, 0.05mg Na₃N.

Immunogen

A synthetic peptide corresponding to a sequence at the C-terminus of human RAB8A(170-183aa KAKMDKKLEGNSPQ), identical to the related mouse and rat sequences.

Purification

Immunogen affinity purified.

Cross Reactivity

No cross reactivity with other proteins

Storage

At -20°C for one year. After r°Constitution, at 4°C for one month. It°Can also be aliquotted and stored frozen at -20°C for a longer time.Avoid repeated freezing and thawing.

Anti-RAB8A Antibody - Protein Information

Name RAB8A

Synonyms MEL, RAB8

Function

The small GTPases Rab are key regulators of intracellular membrane trafficking, from the formation of transport vesicles to their fusion with membranes. Rabs cycle between an inactive GDP-bound form and an active GTP-bound form that is able to recruit to membranes different sets of downstream effectors directly responsible for vesicle formation, movement, tethering and fusion. That Rab is involved in polarized vesicular trafficking and neurotransmitter release. Together with RAB11A, RAB3IP, the exocyst complex, PARD3, PRKCI, ANXA2, CDC42 and DNMBP promotes transcytosis of PODXL to the apical membrane initiation sites (AMIS), apical surface formation and lumenogenesis (PubMed:20890297). Regulates the compacted morphology of the Golgi (PubMed:26209634). Together with MYO5B and RAB11A participates in epithelial cell polarization (PubMed:21282656). Also involved in membrane trafficking to the cilium and ciliogenesis (PubMed:21844891, PubMed:30398148). Together with MICALL2, may also regulate adherens junction assembly (By similarity). May play a role in insulin-induced transport to the plasma membrane of the glucose transporter GLUT4 and therefore play a role in glucose homeostasis (By similarity). Involved in autophagy (PubMed:27103069). Participates in the export of a subset of neosynthesized proteins through a Rab8-Rab10-Rab11-dependent endosomal export route (PubMed:32344433).

Cellular Location

Cell membrane; Lipid-anchor; Cytoplasmic side. Golgi apparatus. Endosome membrane. Recycling endosome membrane. Cell projection, cilium. Cytoplasmic vesicle, phagosome. Cytoplasmic vesicle, phagosome membrane {ECO:0000250|UniProtKB:Q92930}; Lipid-anchor {ECO:0000250|UniProtKB:Q92930}; Cytoplasmic side {ECO:0000250|UniProtKB:Q92930}. Cytoplasm, cytoskeleton, microtubule organizing center, centrosome, centriole {ECO:0000250|UniProtKB:P55258}. Cytoplasm, cytoskeleton, cilium basal body. Midbody. Cytoplasm, cytoskeleton, cilium axoneme. Cytoplasm Note=Colocalizes with OPTN at the Golgi complex and in vesicular structures close to the plasma membrane (PubMed:15837803). In the GDP- bound form, present in the perinuclear region (PubMed:12221131). Shows a polarized

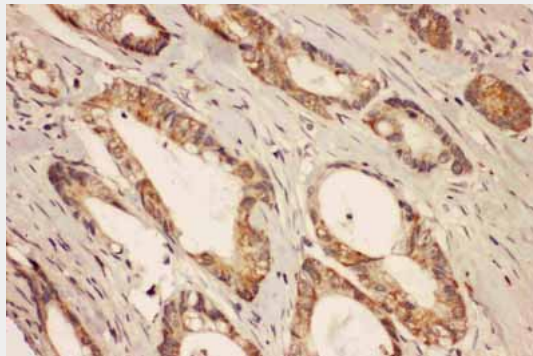
distribution to distal regions of cell protrusions in the GTP-bound form (PubMed:12221131). Colocalizes with PARD3, PRKCI, EXOC5, OCLN, PODXL and RAB11A in apical membrane initiation sites (AMIS) during the generation of apical surface and lumenogenesis (PubMed:20890297). Localizes to tubular recycling endosome (PubMed:19864458). Recruited to phagosomes containing S.aureus or M.tuberculosis (PubMed:21255211). Non-phosphorylated RAB8A predominantly localized to the cytoplasm whereas phosphorylated RAB8A localized to the membrane (PubMed:26824392, PubMed:29125462, PubMed:30398148). Colocalized with MICAL1, GRAF1/ARHGAP26 and GRAF2/ARHGAP10 on endosomal tubules (PubMed:32344433)

Anti-RAB8A Antibody - Protocols

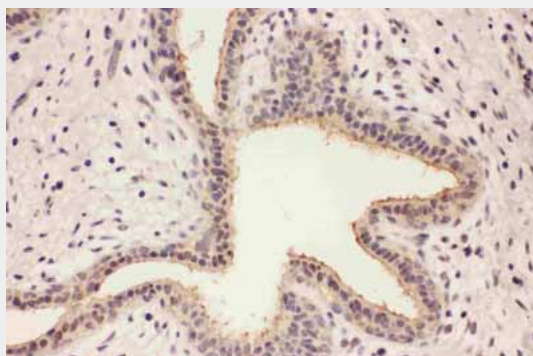
Provided below are standard protocols that you may find useful for product applications.

- [Western Blot](#)
- [Blocking Peptides](#)
- [Dot Blot](#)
- [Immunohistochemistry](#)
- [Immunofluorescence](#)
- [Immunoprecipitation](#)
- [Flow Cytometry](#)
- [Cell Culture](#)

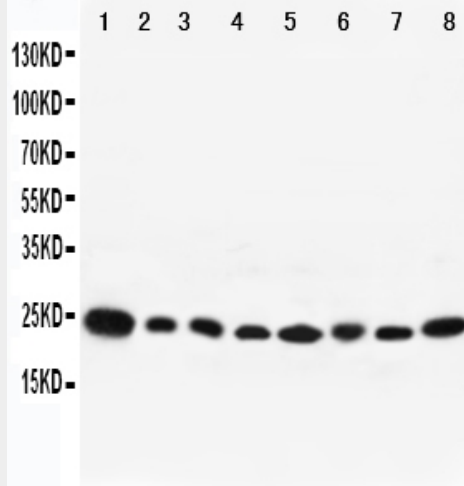
Anti-RAB8A Antibody - Images



Anti-RAB8A antibody, ABO11589, IHC(P)IHC(P): Human Intestinal Cancer Tissue



Anti-RAB8A antibody, ABO11589, IHC(P)IHC(P): Human Mammary Cancer Tissue



Anti-RAB8A antibody, ABO11589, All Western blotting All lanes: Anti-RAB8A (ABO11589) at 0.5ug/ml Lane 1: Rat Brain Tissue Lysate at 40ug Lane 2: Mouse Brain Tissue Lysate at 40ug Lane 3: Human Placenta Tissue Lysate at 40ug Lane 4: HELA Whole Cell Lysate at 40ug Lane 5: PC12 Whole Cell Lysate at 40ug Lane 6: NIH Whole Cell Lysate at 40ug Lane 7: A431 Whole Cell Lysate at 40ug Lane 8: 293T Whole Cell Lysate at 40ug Predicted bind size: 24KD Observed bind size: 24KD

Anti-RAB8A Antibody - Background

Ras-related protein Rab-8A is a protein that in humans is encoded by the RAB8A gene. It is mapped to 19p13.12. The protein encoded by this gene is a member of the RAS superfamily which are small GTP/GDP-binding proteins with an average size of 200 amino acids. The RAS-related proteins of the RAB/YPT family may play a role in the transport of proteins from the endoplasmic reticulum to the Golgi and the plasma membrane. RAB8A regulates cilia assembly by targeting and promoting fusion of vesicles near the ciliary membrane. This gene requires CEP290 for centrosome localization and that CEP290 regulates entry of RAB8A into the cilium during assembly of this organelle. RAB8A has been shown to interact with Optineurin and MAP4K2.